



SENTINEL

KEEPING YOU UP TO DATE WITH ALL THINGS TAG

WORK...

DONE WELL

JAN 2019

IN THIS ISSUE

LEMINGTON LAKES ARE
HOOKED ON QUALITY

PAGE 3

QUALITY USED GATORS

PAGE 16

0% FINANCE
AVAILABLE ON
KRAMER

PAGE 20

T H E L A N D I S O U R F I E L D



WELCOME

With the Christmas festivities now behind us, we've banished the last stray bit of tinsel to the loft for another year and our team are already getting ready for the promise of warmer weather ahead.

It doesn't matter if it's the last strip on a perfectly mown pitch, the first shoots emerging in a precisely drilled field or the final checks one of our trained technicians makes as part of a pre-season combine service. We all know the sense of pride that comes from looking back on a job done well.

This year we're focusing on "Work... Done Well", every day, our talented team of over 120 people are here to support you in doing great work.

Starting with the selection of quality franchises, on the farm, the golf course or your front lawn you can be confident that we can provide the right tools for the job, backing them up with local expertise and the best sales and aftersales support.

This month find out about how Organic milk producer Daioni are benefiting from their investment in the latest Shelbourne PowerMix (p. 4).

Agricultural contractor Henry Righton talks about the value of solid backup and ultimate performance with

his 8600 forage harvester (p. 7) and Puffin Produce, the largest 'grower-owned' supplier of Welsh produce discuss how they are using data collected straight from field to refine and benchmark their production process using MyJohnDeere.com.

With the lambing season just around the corner, find out more about the new 865M Gator (p. 11) and check out latest offers on quality used gators (p. 16).

We've also got some amazing deals on the last few 2018 mowers (p. 15). With savings of up to £916 on a X350 ride on, with a 42" side discharge deck and up to 4 years protection* you can't go wrong, and your lawn will love you for it!

The whole team would like to wish you the best for 2019, and as always, if you would like to find out any more information on any of products and services call our friendly team on 0345 222 0456.

Ben Tallis

* Warranty for private residential use on a 300 series mower is 2 years, this is extended to 4 years (300 hours) when an annual service is completed by an authorised John Deere dealer. Commercial use warranty is 12 months unlimited hours.

GENERAL DATA PROTECTION REGULATION (GDPR)

TAG is fully GDPR compliant, you are receiving this promotion as an existing business customer of TAG or because you opted in to receive marketing information. If you wish to update or check your preferences, please email marketing@tallisamosgroup.co.uk. Our updated privacy policy can be found at www.tallisamosgroup.co.uk/privacy-policy



HOOKED ON QUALITY

Lemington Lakes near Moreton-in-Marsh is a premium coarse fishery with holiday accommodation, consisting of chalets, bed & breakfast as well as a caravan park. Situated on 60 acres of beautiful rolling terrain consisting of woodland, recreational grass and 20 acres of coarse fishing lakes and stock ponds, Lemington Lakes is surely one of the most beautiful fisheries in the area. The business has a sister-company - Cotswold Lake Supplies, that breeds and supplies an entire range of native coarse fish - including Carp, Roach, Rudd, Tench and Bream to name but a few, supplying other fishery businesses in the UK.

Owners Andy and Debbie Machin run the fishery and manage the upkeep of the grounds, year-round. Commented Andy, "I have one assistant, Jack, who helps my wife and I with the regular maintenance programme, keeping everything in top condition for our visitors. We run two John Deere X749 ride-on mowers with sixty-two inch (62") cut mid-mounts, to keep on top of the grass and we mulch everything, so there's nothing to collect. That means we can get through the twenty acres in around eight man hours. We use the smaller mowers, because we have a lot of tight access areas, narrow pathways and extreme undulating ground. Although we need capacity, we also need to avoid anything too big. With the sixty-two inch decks we can deal with all the ground conditions without scalping and can also get across it reasonably quickly."

The John Deere X749 is a four-wheel-drive and four-wheel steer mower with a 24hp Yanmar diesel engine and is capable of manoeuvring in even the

most difficult of conditions. In addition to the ride-on mowers, Andy uses a John Deere 3036E Compact tractor with front-end loader and Ifor Williams trailer for dealing with movement of soil and materials while enhancing and improving the facilities at the fishery. "We used to have a diesel John Deere Gator," commented Andy, "but decided to change it for an electric version, so it doesn't disturb the anglers. That's turned out to be a really good decision because our customers have commented on how quiet we are - even when we are working - that's a comment that's always nice to hear! I get all my John Deere equipment from Tallis Amos Group at Evesham, because they have always provided us with excellent after-sales service. If we need them, they are with us at the drop of a hat."

Andy and Debbie Machin purchased Lemington Lakes in 2003 and have made significant improvements to the facilities to provide an enjoyable recreational resource for their customers. "We've been John Deere ever-since we moved here," added Andy, "it's simply because they are such rugged and reliable machines that we rarely have any breakdown issues. It's just a matter of normal servicing and blade sharpening. We used the X748 for ten years prior to replacing them with the X749 and when we came to trade them in, found that we got an excellent residual value, far better than we would have got for other brands. Couple this with the service and support we get from Richard Ainslie and his team of very friendly staff at TAG, there is absolutely no reason for us to consider going anywhere else." he concluded.



ORGANIC MILK PRODUCER LOOKS FOR SERIOUS BACK-UP

Under the brand name of Daioni, Laurence and Tom Harris produce and market a range of long-life, flavoured and plain organic milks, supplying to major international markets including China, Hong Kong, Singapore, Vietnam and the Middle East. They farm around 3500 acres on three farms fairly close to Boncath, in West Wales, milk 1000 cows (mainly British Friesians and Jerseys), run 2000 ewes, 150 head fattening cattle and grow around 500 acres of cereals. The entire operation is organic and the winter cattle feeding regime on the autumn calving herd and fattening cattle is managed using a Shelbourne Reynolds PowerMix diet feeder that they purchased from local dealer Tallis Amos Group (TAG) two seasons back.

“We run three separate herds” commented Laurence Harris “and the capacity of the PowerMix means we can feed the largest of the herds at Ffosyficier Farm in one load. That means we can be extremely efficient in usually once a day feeding, providing maintenance plus twenty four in the winter yards, then we use a computerised dispatch system to feed concentrates for yield in the parlour.”

The Shelbourne Reynolds PowerMix is a 22cu.m capacity and so very capable of taking big bale silage

or clamp silage, with ease. A large central auger carries out the mixing and chopping of materials to form a homogenous and dense feed sample that boosts milk yield performance. It will comfortably hold up to 10 tonnes of feed.

“What I like most about this mixer,” added Laurence, “is that it can feed out over some of our higher barriers without a problem, it’s very easy to operate and so far hasn’t missed a beat. Our typical ration might include crimped barley (home-grown), whole-crop grass, red-clover and molasses and although we have quite a young herd, our average is around 6000 litres. The system is working very well and we’ve made a good choice in deciding on the PowerMix.”

With such an important machine feeding a high-production herd, reliability is important and failure is not an option, so what about dealer back-up in case of any malfunction? “We’ve found our local dealer, TAG to be an excellent provider of after-sales service,” said Laurence, “Their salesman Dylan Jones really takes care of us and their technicians are really friendly and always helpful. We run a John Deere combine and so we have experienced the level of support they provide for a very important machine prior to and during harvest. Likewise, we know we can rely on them if we ever do

get an issue with the PowerMix. The main factors in deciding on the Shelbourne Reynolds was capacity of machine, reliability of performance, capability in mixing a fully-blended mix - including big bales of red clover and, after-sales service. Even in the deepest extremes of winter, regardless, I know they will be there. We can't afford for our livestock to go hungry due to a machine breakdown and I am confident that the back-up we get from the team at TAG, will take care of us if we ever get that call."



Get many years of reliable service from your Shelbourne Feeder wagon with a pre-season check. Our preseason check covers; Elevator belt condition, Tension and Rollers, Blades and Wear plates, Electrics and Weigh load indicators, Wheels, Wheel bearings, Tyres and Brakes.



Tom Kirkham, Foreman & Barry Davies, Technician

STRONG RELIABLE MACHINES - STRONG RELIABLE SUPPORT



NEW POWERMIX PLUS

- 16M, 18M, 20M, 22M MODELS
- SINGLE & TANDEM SPRUNG AXLE
- NEW TUB SHAPE GIVES BETTER MIXING & FASTER BALE PROCESSING
- LOWER HP REQUIREMENT
- 12.5MM THICK SIDEWALLS FOR GREATER DURABILITY



Powerspread Range from 1600 to 3200 gallons



Cubicle Bedder Range from 0.5m to 1.5m Capacity



Shear Bucket Range from 6' to 7'2"



SOLID BACK-UP BOOSTS ULTIMATE PERFORMANCE

For agricultural contractor, Henry Righton, the silage harvest has been pretty much a doddle this year, not necessarily due to the effects of the very dry summer, but more down to the equipment he is using and the support he gets from his local dealer.

Henry Righton Agricultural Contracting, based in Moreton-in-Marsh, Gloucestershire started business back in 1991 and today offers a wide range of contracting services including all arable work, muck spreading, umbilical slurry applications, big square baling, chemical, seed and fertiliser applications, combine harvesting and everything to do with forage harvesting - including grass, maize and whole-crop. He also runs around 2000 acres of his own farming enterprise and therefore he is testing his machinery to the maximum - year round.

“Maize silage work this year,” commented Henry Righton “has totalled about fifteen hundred acres (1500) and throughout the business, I have a team of ten full-time staff with six part-timers, depending on the workload. We operate in a twenty mile radius of home and most of our customers are dairy based farming businesses. Two years ago we invested in the very latest self-propelled forage harvester a John Deere 8600 and its performance has been nothing short of impressive. In the maize crop we use a ten-row Kemper header and the workflow has been so smooth, with excellent performance. It’s so good that I have capacity to take on much more contracting acreage in the future as we are not working at full-capacity.”

Since starting his business almost 28 years ago, Henry has used the services of the Tallis Amos Group from their local Evesham branch. Henry currently runs seven John Deere tractors, two John Deere S685 combine harvesters plus the recent addition of the 8600 self-propelled forage harvester. “We always want to provide a first class service with reliable, first-class equipment.” said Henry, “I’ve found over the years that John Deere equipment has always provided great performance and excellent reliability, plus, the cost of ownership and residual value of the equipment makes it a very viable proposition.”

As with many professional contractors, Henry Righton uses the John Deere PowerGard extended warranty programme on all his John Deere equipment as part of a business decision to protect assets.

“No matter what brand of machinery you choose,” added Henry “there is always the possibility of a component failure or malfunction, especially when equipment is being used in high output functions like agricultural contracting. I choose to include PowerGard on all my John Deere products because it makes absolute business sense when you can calculate the exact cost of the machine ownership to the penny and, avoid any nasty surprises or costs in the cashflow. That gives me total peace of mind - especially during the busy season. I do have some products other than John Deere and where I can, I also include extended warranty on these because it always makes commercial sense.”

On all his prime-movers, Henry uses the latest John Deere StarFire SF6000 receivers, coupled to his GreenStar AMS software providing valuable data, yield and accuracy recording for his customers. “When you have such high capacity machinery as we do in our fleet,” enthused Henry, “it’s important to be able to utilise agricultural management software to aid customers to get the best performance from their crops. I get great support all-round from TAG and their AMS team and that gets me through any issues that can appear in technology from time to time.”



FULLY INTEGRATED MANAGEMENT SOLUTION

MyJobConnect Premium consists of 3 mobile apps all linked together via the John Deere Operations Center.



Operations Center

An online hub for all your fleet and field management data. Easily create or edit client/farm/field data, boundaries, guidance lines and machine/implement off-set.



MyJobConnect

Operators receive work instructions direct to the cab and report progress – all in real-time.



MyJobConnect Manager

Eliminate paperwork and endless phone calls during job planning, execution and reporting.



MyLogistics

Never get lost! An intelligent Ag Navigation system that includes small field roads.

DATA HARVESTING TO BOOST CROP PERFORMANCE

As the largest 'grower-owned' supplier of Welsh produce grown, picked and packed in Wales, Puffin Produce Ltd is always looking at ways to improve efficiency throughout its grower network. Currently, some of its growers are utilising the very latest John Deere AMS technology supplied and installed by Tallis Amos Group with a view to helping them monitor and benchmark their production practices.

The App - known as MyJobConnect is downloadable via a typical smart phone and accessible anywhere there is an internet connection. Data is fed from the machine in the field that has John Deere GreenStar AMS installed and collects information such as GPS position, implement width, forward speed, fuel consumption, seed rate etc. This data is analysed and from it, relevant usable management data can be recorded and acted upon.

Puffin Produce Agronomist, Stephen Mathias commented, "The project is in the early stages of development at the moment but the John Deere technology makes it very simple to collect the data which assists our growers with their management

decisions. We are setting up a benchmark system to benefit our growers that takes the data from the field and then enables comparisons by grower and variety of every aspect of the cultivation, planting, and harvesting process - plus of course the management of inputs. This allows growers to focus on the efficiency of their production, it highlights cost of production measurements that are different and what can be done to redress the balance."

MyJobConnect can be utilised to gather every single element of production from every drop of fuel burned, every second of time taken, right through to every tonne of potatoes harvested - costs, time, margins and profitability.

TAG has a team of Integrated Solutions specialists who are fully certified and qualified to install and support a wide range of specific software, hardware and apps from John Deere. These apps are designed specifically for a wide range of agricultural functions and can be used for total project management, costings and efficiency measurement. For more information on any John Deere Integrated solutions, contact your local TAG branch or go to our website at: tallisamosgroup.co.uk

THE AWARD WINNING ISUZU D-MAX

3 NEW COLOURS THAT WORK



Great deals when you pre order
your new 19 Plate Truck!

Contact your local TAG Branch
for more information

19 PLATE

DEALS

TAG PARTS ONLINE

In association with Kramp UK, Tallis Amos Group are pleased to be able to give you access to Europe's largest range of spare parts all in one place within a few clicks through our online shop.

Whether you operate in the agricultural market, forestry & grasscare sectors, in the construction, mechanical engineering, or earth-moving industries we have all the parts and consumables that you require.

- Open 24 Hours a day, seven days a week
- Search within Categories and by Model
- Genuine and Quality compatible manufacture parts
- Up to date Stock Availability
- Parts Diagrams to assist in identifying the correct part

If you need a hand, our experienced team of in house Parts Experts are always at the end of the phone and happy to help.

If your order is placed by 6pm it's eligible for next day delivery either direct to your door or you can collect free of charge from your local TAG branch!*

**[tallisamosgroup.co.uk/
online-parts](http://tallisamosgroup.co.uk/online-parts)**



To register for this service

Visit our website at the above address and complete the online registration form or contact Paul Stuckey—Group Parts Manager on 07500 091 944 or paul.stuckey@tallisamosgroup.co.uk

* Next day delivery excludes orders placed on weekends or bank holidays



The Ultimate In Comfort And Performance

Things can get rough in the great outdoors, so you need to be ready for anything. That's why John Deere designed the XUV865M with on-demand 4WD and the highest ground clearance of any of the John Deere Crossovers, freeing you to focus on what's ahead. The enclosed cab keeps you clean and dry, whether you're rushing through the mud or dashing across a stream. Tackle every obstacle head-on. No terrain is too much to handle.



No Compromises

These top-of-the-line Gators tick all the boxes in terms of power, capacity and car-style comfort. If you want the best, look no further.



Go Higher

With true on-demand 4WD and even more ground clearance, both models go where others can't when conditions are tricky.



Ride In Style

Whether it is a completely open operator station or a factory installed cab, the interior has been redesigned with comfort and ergonomics in mind.



Open Or Closed?

Choose either an open cab with nets, or the fully-enclosed cab with poly doors for maximum protection and minimum noise.



Wired For Action

The cab comes with all cables pre-installed, so hooking up a winch is really easy.



Take It Away

Heavy or bulky loads? No problem – these models have ample towing and cargo capacity, plus road holding and brakes to match.

LAST CHANCE!

EXPERT CHECK: PRE-SEASON SERVICE CAMPAIGN

OFFER ENDS 31 JANUARY 2019



Call us before 31st January 2019 to schedule your Pre-Season Expert Check and benefit from our special offer terms - it will pay off next harvest. While you're at it, ask us about our Harvest promise for next season!



EXPERT CHECK FOR T-SERIES COMBINES

£360*

Uptime when you need your combine most - that's what you get from our 175-checkpoint comprehensive T-Series combine and header Expert Check. From professionally checking the feeder houses lup clutch torque to competently assessing wear status and calibrations - our experts dont miss a thing,



EXPERT CHECK FOR S-SERIES COMBINES

£400*

The comprehensive S-Series combine and header Expert Check comprises of 175 check points that are thoroughly examined by our experienced service technicians. The main rotor drive is checked, including a detailed assessment of wear status and calibrations.



EXPERT CHECK FOR W-SERIES COMBINES

£360*

High performance with smooth crop flow and exceptional straw and grain quality will be yours next season after a thorough 185-check point inspection. From professionally checking the feeder houses lip clutch torque to competently assessing wear status and calibrations - our experts don't miss a thing.

* Expert Check is a multipoint check that can be carried out at a fixed price or in addition to your full winter service. Our Harvest Promise is only available on combines no older than 7 years & had an expert check completed by our trained technicians prior to the current season. We reserve the right to charge for cleaning if needed. Prices are subject to VAT @ 20%. Call your local service manager for more info.

COMPETITION WINNERS

We recently held a competition for anyone who purchased a New or Used extended warranty package from Tallis Amos Group and took delivery of the machine between the 1st June 2018 and 30th September 2018. We are pleased to announce that the winners of this competition were Tim & David Derricutt, who enjoyed watching England's victory over South Africa at Twickenham!

Pictured: Tim & David Derricutt,
Paul Morris- TAG Area Sales Manager



STIHL[®]



THE CHAINSAW PROMOTION WITH THE EDGE.

**BUY SELECTED STIHL
CHAINSAWS AND GET YOUR
HANDS ON THESE FANTASTIC
FREE ACCESSORIES!**

Offer 1: Purchase any STIHL MSA 160, MSA 200, MS 180 or MS 181 chainsaw and receive a free sharpening kit, work gloves and safety glasses.

Offer 2: Purchase any STIHL MS 211, MS 231 or MS 251 chainsaw and receive a free sharpening kit, work gloves, safety glasses and forestry axe.

FREE ACCESSORIES
WORTH UP TO
£87
RRP

STIHL and its Approved Dealers reserve the right to substitute free accessories offered in this promotion for alternative suitable tools. While stocks last. Full terms and conditions available at www.stihl.co.uk/offer

TRU-TURF R50-11

Greens Roller

- POWER AND RELIABILITY
- CONSTANT TRACTION
- EXTRA EFFICIENCY
- GREENS PERFECTION
- SOIL CONDITIONING

TRU-TURF



Only rollers endorsed
by the PGA Tour



CALL US TO BOOK IN YOUR DEMONSTRATION!

NEW RANGE FOR 2019!



CALL YOUR LOCAL BRANCH ON 0345 222 0456

END OF SEASON OFFERS

RUN46



Retail: £590
TAG Price: £510

END OF SEASON SPECIAL

£475

TOTAL SAVING: £115

RUN51



Retail: £702
TAG Price: £598

END OF SEASON SPECIAL

£549

TOTAL SAVING: £153

R43S



Retail: £827
TAG Price: £510

END OF SEASON SPECIAL

£475

TOTAL SAVING: £115

R43V



Retail: £929
TAG Price: £795

END OF SEASON SPECIAL

£699

TOTAL SAVING: £230

X166R



Retail: £4484
TAG Price: £3852

END OF SEASON SPECIAL

£3699

TOTAL SAVING: £785

X350

c/w 42" Side discharge Deck & mulch gate



Retail: £4911
TAG Price: £4220

END OF SEASON SPECIAL

£3995

TOTAL SAVING: £916

All Prices Include VAT

Offers available on Stock machines only and are subject to remaining unsold stock. Offer ends 28th February 2019. Machines must be paid for in full before delivery or by 28th February 2019, whichever is sooner. All have been advertised at a higher price for 30 days.

USED MACHINERY



John Deere XUV 855D
2016 **£13,000**

Yellow Alloy Wheels Delux Canopy
Hard Doors Windscreen Kit Front +
Rear Worklights Drawbar Turn Signal
Kit, Harness Kit Hd Brush Guard +
Fender Guards *Rd Reg - Limited
Use* *Cesar Datatag Reg. 600 Hrs

51022191



John Deere XUV 855D
2017 **£13,500**

Alloy Wheels, Sports Seats, Full
Cab+Doors, Protection Kit, Bullbar,
Turn Signal Kit, Drawbar And Ball
Datatag Ident No 34A19c *Rd Reg
-Limited Use Classification*. 375 Hrs

51022464



John Deere XUV 855D
2014 **£9,995**

650 hours, Power steering,
Glass doors, Turf tyres, Road
Registered. 757 Hrs

51020372



John Deere 855D S4
2014 **£8,500**

Bighorn Tyres, Olive & Black

31020970



John Deere XUV 855D
2016 **£8,500**

Deluxe Canopy, hard door kit,
Bighorne tyres and alloy wheels,
Road kit, 50k. 1100 Hrs

31021032



John Deere XUV 855D
2015 **£9,995**

Power Steering, Alloy Wheels,
Std Seat, Delux Canopy, Glass
Door Kit, Power Lift, Windshield,
No Datatag. 1129 Hrs

51020124



John Deere XUV 855D OLIVE
2014 **£8,500**

Nearly New Bighorn Tyres all round,
14" Black Alloys, Standard Seats,
Deluxe Cargo Box with manual tip,
Deluxe Canopy, Road Homologated,
Front & Rear Windscreens. 1850 Hrs

21022742



John Deere XUV 855D
2014 **£10,995**

Olive and black, Steel wheels,
Maxxis big horn tyres, Canopy.
1658 Hrs

51021487



John Deere XUV 855D
2013 **£7,500**

Full Cab & Doors, Black sports
seats, Brush guard, Road kit.
1073 Hrs

31021576



John Deere XUV 855D
2008 **£5,500**

Bighorne Wheels, Performance
sports seats, Windshield kit,
Front brush guard, Deluxe light
kit, Drawbar, Rear canopy

31022411

Call 01386 576 666 for more information. All prices Ex-VAT

**FEATURED
PRODUCT**



11016119

John Deere M944I

2016

£58,000

EX DEMO M944I Trailed Sprayer, 4400 Ltr, 820/85R38, Auto Rate Control, K80 Ball Coupling, BoomTrac, 24M (2/12) folding boom, Hydraulic boom tilt, Variable geometry, Section Control (8 Sections), Pressure Recirculating Spray System, Auto Dilute, Hydraulic Steering Axle, Hydraulic Pump Drive, Digital tank level indicator, Beacon Light, 3" Filling Hose (9m)

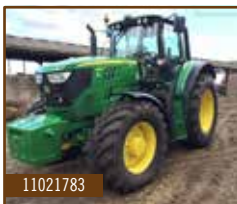


51021065

John Deere 6090MC

2014 **£40,000**

PowerQuad 40K, Tyres 35%,
C/W H340 MSL LDR. 2546 Hrs



11021783

John Deere 6155M

2017 **£68,000**

AutoQuad Plus 40Kmh, AutoTrac Ready, Standard Cab, Economy Seat, Panoramic Front Windscreen, Hydraulic Pump 114L/Min, 4 Mechanical SCV's, Rear PTO 540/540E/1000, Michelin Multibib 650/65 R38, Michelin Multibib 540/65 R28, Premium Light Package. Est 980Hrs



11021784

John Deere 6155M

2017 **£65,000**

AutoQuad Plus 40 km/h, AutoTrac Ready, Standard Cab, Basic Seat, Hydraulic Pump - 114 l/min, 3 Mechanical SCV's, 540/540E/1000rpm PTO, Michelin Agribib 520/85R38 & Michelin Omnibib 480/70R28. 553 Hrs

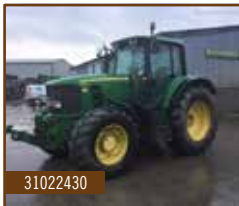


51022651

John Deere 6320

2006 **£23,000**

PowerQuad 16/16 40K, Air Con, 16.9 R24 - 14.9 R24 40% 2SCV, 540/1000 PTO. 4800 Hrs



31022430

John Deere 6930

2008 **£35,000**

6930 Premium, Autoquad 40k, TLS and Cab Suspension, Front linkage and PTO, Electric SCV's. 6853 Hrs



11020325

John Deere 6110M + Loader 2017 **£56,750**

40K, PQ, 420/85R38, TLS, Air Con, C/W JD 623R Loader. 820 Hrs

Call 01386 576 666 for more information. All prices Ex-VAT



11020375

John Deere 3038R

2017 **£16,395**

3 Speed Hydrostatic transmission, Open Station, 77 Hours, Dual rear SCV's, Industrial Tyres, Speed Match, Motion Match, Load Match, Cruise Control. 77 Hrs



11020484

John Deere 2036R

2018 **£22,950**

BRAND NEW, 2 Speed Hydrostatic transmission, Comfort Cab, Dual rear SCV's, Turf Tyres, 60" Auto-connect Side discharge deck with Command Cut Rear Cesar Datatag



11020371

John Deere 3038R

2017 **£17,300**

BRAND NEW. 3 Speed Hydrostatic transmission, Open Station, Dual rear SCV's, Turf Tyres, Speed Match, Motion Match, Load Match, Cruise Control



31022243

John Deere W550

2012 **£85,000**

W550 Levelland Combine, 618R Header and Trailer, Chaff Spreader and Chopper, Electric Sieve Adjust, Lateral Tilt Feeder House. 749 Hrs



21019575

John Deere T560

2011 **£99,500**

JD T560 LI Combine, Lateral Tilt, Air Seat, Autotrac and Monitoring Ready, Premium Straw Chopper, Chaff Spreader, Windrow Deflector Rake, Dual Cyl Drive, Trailer Hitch, 622R Header & Trolley, Rape Ext.



11020406

John Deere C670

HillMaster 2011 **£99,950**

625R Header, Immaculate condition, Barn stored, full pre harvest check including belts, Autotrac ready, Good tyres, Low hours

FEATURED PRODUCT



11021863

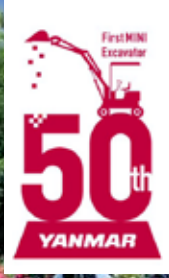
John Deere 732i

2015

£35,000

3200 Litre Tank, 24/12M Booms, ISOBUS Ready, Section Control, 2630 Control Package, Auto Steering Drawbar, 420/85 R38 Wheels, Multi Nozzle Bodies

Call 01386 576 666 for more information. All prices Ex-VAT



NEW TO TAG  **YANMAR**

THE ORIGINAL AND STILL THE BEST

CELEBRATING 50 YEARS SINCE THE
FIRST YANMAR MINI EXCAVATOR.



CONTACT OUR PLANT AREA SALES MANAGER ADAM SANDERS ON
TELEPHONE: 07930 916227 | EMAIL: ADAM.SANDERS@TALLISAMOSGROUP.CO.UK

**0% FINANCE*
NOW AVAILABLE**

TAG
tallis amos group

W KRAMER

THE PERFECT TELEHANDLER FOR YOUR FARM

- Compact and Powerful
- 3.5 tonne lift capacity
- 7 metre reach
- Precision adjustable load sensing hydraulics
- Legendary German build quality
- Outstanding versatility



Agricultural tyres available

The Kramer KT357 is a manoeuvrable, compact and powerful telehandler, which was designed for agricultural work. The maximum lift capacity of 3.5 tonnes and stacking height of 7 metres provides outstanding versatility for all farm and loading activities. It's the little details that makes the Kramer machines stand out, durability built in as standard with a 1m overlap between boom sections for a long trouble free life, the precise load sensing hydraulics and the powerful 136 hp engine provide the power and performance that you need.

With a range of telescopic handlers and wheeled loaders from a compact 2.7 tonne 6 metre KT276 to the capable 5.5 tonne 9 metre KT559 there's something in the Kramer range for everyone

* The finance offer is available for business users in the UK only. The offer is available until further notice. Finance is limited to 25% of retail value. Rates/payments may vary to reflect changes in tax and cost of funds. VAT where applicable. An administration fee will be charged. We may withdraw this offer at any time. Finance subject to status. Terms and conditions apply. For further information contact Tallis Amos Group.

CALL YOUR NEAREST BRANCH FOR MORE DETAILS

EVESHAM
Hinton on the Green
Evesham
Worcestershire
WR11 2QT

BIBURY
Meadowlands
Bibury, Cirencester
Gloucestershire
GL7 5LZ

LEOMINSTER
Southern Avenue
Leominster
Herefordshire
HR6 0QB

NARBERTH
Redstone Road
Narberth
Pembrokeshire
SA67 7ES

0345 222 0456

WWW.TALLISAMOSGROUP.CO.UK