



# SENTINEL

KEEPING YOU UP TO DATE WITH ALL THINGS TAG

## GEARING UP FOR SPRING

MARCH 2019

### IN THIS ISSUE

BALERS OFFERS  
PAGE 4

5R UPDATES  
PAGE 6

NEW PRECISION  
CUT MOWER  
PAGE 19

THE LAND IS OUR FIELD

**EFFICIENT.  
STRONG.  
RELIABLE.**



DO MORE.  
GUARANTEED.

**NOW!**  
Transport + Field

6-CYLINDER FUEL GUARANTEE

# WELCOME

Just 12 months ago we were blanketed with snow thanks to 'The Beast from the East', this year we have seen record breaking temperatures throughout February meaning an early start to spring work. Time will tell if this will continue into March, but whatever the weather, make sure that your equipment is ready for to go when you need it.

It's recognised that regular maintenance is an important factor in making sure that you get years of reliable service from your equipment, recent research has also shown that regular servicing and filter changes can also save up to 5% on fuel costs. That can add up to a significant amount over the year.

Contact your local service team to arrange a service with our manufacturer trained technicians. As well as giving your kit the care and attention it deserves, we can often identify any areas which may need attention avoiding costly breakdowns when you need your machine most.

With less than a month before our planned departure from the EU many of us are both anxious about the uncertainty and excited by the opportunities this change will bring. No matter the eventual outcome, every business needs to maintain a strong control on their costs. That's why we

believe in offering a range of products designed to offer exceptional value with a focus on saving costs over the long run. We're that confident of our low running costs that our industry leading fuel guarantee programme has now been extended to the complete 6-cylinder tractor range. Guaranteeing your fuel consumption in both field and road work. Ask your Agricultural Area Sales Manager for more details.

The convenience of online shopping has also helped many businesses save both time and money, if you haven't already signed up to TAG Parts Online, contact your local parts department to get access to a full range of over 550,000 genuine and compatible parts and accessories. Everything you could need for the farm, golf course or workshop available to order online 24 hours a day.

Finally, the changes to the Annual Investment Allowance made in the most recent budget introduce a temporary increase in the tax relief available for expenditure on plant and machinery from the 1st Jan onwards. Talk to your accountant to find out what it means for your business, our in-house finance team are on hand to offer a range of flexible finance options to business customers helping you to make the most of these tax breaks.

## GENERAL DATA PROTECTION REGULATION (GDPR)

TAG is fully GDPR compliant, you are receiving this promotion as an existing business customer of TAG or because you opted in to receive marketing information. If you wish to update or check your preferences, please email [marketing@tallisamosgroup.co.uk](mailto:marketing@tallisamosgroup.co.uk). Our updated privacy policy can be found at [www.tallisamosgroup.co.uk/privacy-policy](http://www.tallisamosgroup.co.uk/privacy-policy)



## CONTRACTOR SLASHES BALE COSTS

**F**ather and sons team, Philip, Tom and Joe Powell farm 600 acres of mixed arable, sheep and beef sucklers near Craven Arms, Shropshire. They run an all round bale system for ease of handling fodder and bedding, including straw from 200 acres of winter wheat, spring barley and oats, plus hay and silage. The Powell's took delivery of a new John Deere V451M round baler during spring 2018 and it has proven to be a big success for the farming and contracting enterprise of J&T Powell & Son.

"This is our sixth John Deere round baler in a row!" Enthused Phil Powell, "we bought our first one from TAG in Leominster in 1992 and they have given us excellent service. They are very reliable, easy to use and the back-up we get from the TAG service department has been first-class. The performance is such that apart from baling our own forage and straw, we are able to offer a contract service to some of our local neighbours."

The Powell's new John Deere V451M baler, is designed and manufactured as a true, 'multi-crop' baler, has a variable chamber - to aid tailor-made bale sizes and offers bale diameters from 1.65m to 1.85m in straw, hay, haylage and silage. The bale density is also adjustable and the Powell's are getting bale weights in straw up to 200kg or more, which has proven a big benefit when it comes to handling and transporting.

Tom Powell does most of the round baling work and said, "The extra wide pick-up on this new baler has significantly improved material flow into the bale chamber, compared with other balers and it lets me pick up even the heaviest of windrows, very rapidly - up to sixty perfect bales an hour. It has a very simple driveline, so very little to go wrong and it's very easy to load the

net-wrap. It takes around one minute to swap the rolls out and you don't need any tools. It's a great baler!"

With such high density coming from the new baler, Philip Powell sees a major benefit not just for themselves, but for their contracting customers as well. "There are a lot of round balers in the area," added Phil, "but not many that come close to producing the bale weight we can with the John Deere baler. For example, there's a local roller baler producing bale weights of just 120kg in straw, whereas with our baler, producing the same size of bale, we are getting 200kg plus. Now that means that our customers are getting a much better deal because we charge the same amount per bale as the competition, but our customers are getting nearly twice the amount of straw in a bale produced by the John Deere. That all means it's better, both for transport and for handling as well as bedding down. It's also much more cost-effective. The service and performance over the years from our John Deere balers is the reason we continue to buy them. The service and support we get from TAG justifies our choice."



Phil Powell (centre) with sons Tom (left) and Joe. "Not many balers come close to producing the bale weight we can with the John Deere"

# TOP SELLERS

ORDER NOW TO EXPERIENCE  
THE JOHN DEERE DIFFERENCE  
THIS HARVEST

## ACT NOW TO SECURE FOR 2019

### SPECIFICATION

Pickup:	2.2m HD with 5 tine bars
Chopper:	MaxiCut HC 25 Knives
Axle:	Choice of Single or Tandem
Bale chamber:	18 HD rollers, 12 ribs for easy bales starting
Bale Diameter:	1.25 – 1.35m
Features:	Auto Greasing system, Vision Pack Camera
RRP:	£97,381

### C441R COMBI WRAPPER BALER



**£59,950**  
0% - 2+22  
MONTHLY PAYMENTS\*

## ASK ABOUT OUR FUSION TRADE IN ALLOWANCE

### V451M VARIABLE CHAMBER BALER

### SPECIFICATION

Bale Size:	1.0-1.65m
Pickup:	2.2m HD with 5 tine bars, RotoFlow (MaxiCut 13 Knife available as an option), Roller crop press
Bale chamber:	6 laced belts
Tyres:	Large 500/50-17 for low ground pressure
RRP:	£45,264



**£30,950**  
0% - 2+22  
MONTHLY PAYMENTS\*

### SPECIFICATION

Bale Diameter:	1.25m – 1.35m
Bale Width:	1.21m
Pickup:	2.2m MaxiCut 13 knife, individually spring loaded knife protection
Bale Chamber:	Silage special - 17 ribbed rolls (4 reinforced)
RRP:	£43,144

### F441M FIXED CHAMBER BALER



**£26,500**  
0% - 2+22  
MONTHLY PAYMENTS\*

## ONLY 1 REMAINING

\* Finance available on 50% of retail, available in the UK for business purposes only, subject to acceptance, conditions apply. Offer may be withdrawn at any time.  
PRICES SHOWN EXC. VAT

## ASK YOUR SALES REPRESENTATIVE FOR MORE DETAILS

# The new 5R Series



Compact has evolved. Brimming with power, and loaded with features for versatility and comfort, the new 5R is in a class by itself. This is the tractor for all you do, and everything you've always wanted to do.



NOTHING RUNS LIKE A DEERE

## BE PREPARED FOR THE WARM WEATHER WITH A TAG AIR CON SERVICE

**We can carry out Air Conditioning Servicing on all Makes and Models of Tractors, Combines, Sprayers and Telehandlers**

Air Con systems that are not recharged regularly will be less effective and have to work harder to produce cool air. If your air con system has not been charged in the past 2 years it will dramatically reduce efficiency

Our in house air con recharge service also includes a full system health check for any leakages!



# JOHN DEERE UPDATES 5R SERIES TRACTORS FOR 2019!

John Deere has announced several updates to its 5R Series tractors from 90 to 125hp, designed to increase their versatility and suitability for small and medium sized livestock and arable farms.

To improve their connectivity for precision farming operations, from spring 2019 the tractors will be available AutoTrac and ISObus-ready. JDLink telematics will also be available ex-factory, together with a remote display access (RDA) five-year subscription.

Other new features include an extendable pick-up hitch with hydraulic push-back through the rear SCVs to improve rear visibility, and variable ratio steering (VRS). This requires AutoTrac for operation and is selectable through a dedicated switch on the tractor cab's B-post.

The 5090R, 5100R, 5115R and 5125R tractors are equipped with fuel efficient, Stage IIIB compliant 4.5-litre John Deere PWX engines. These diesel-only four-cylinder engines deliver 10 extra hp for transport applications via their transport power management (TPM) system.

Three transmission options start with the entry level 16/16 CommandQuad Manual featuring four ranges and four powershifttable gears within each range. Also available are a 16/16 CommandQuad and a

32/16 Command8 transmission, which has eight powershifttable gears and an ECO mode that enables a top speed of 40kph at only 1759 engine rpm.

All three transmissions offer a fully automatic clutch, individual start-up gears, individually settable speeds and an electric park lock. Automatic shifting is standard on the premium Command8 and optional on the 16/16 CommandQuad.

Front axle suspension and an optional maintenance-free mechanical cab suspension system are available, while the air suspended Grammer seat from the 6R Series features up to 15 degrees of swivel, lumbar adjustment and an optional heating system.

The 5R Series combines a one-piece curved frame design with a low centre of gravity and has a turning radius of just 3.75m for excellent manoeuvrability, even when fitted with a front loader. For loader operation there is a choice of mechanical or new E joysticks, both linked to the tractor seat, and rear lift capacity is 4.7 or optionally 5.3 tonnes.

In addition, and designed for use in narrow row crops, other specialist crops and vineyards, 5RN Series tractors feature a minimum width of 1.7m, a narrow cab and mechanical front wheel drive.



James Hemming "TAG have proven to be a major benefit in helping us get on top of the golf course refurbishment plan."



## GREENS BROUGHT BACK TO LIFE

Since a recent buyout, the entire premises and facilities of Cricklade House, a 45 bed hotel and leisure facility with golf course, is undergoing a complete and radical overhaul. The venue is based on 35 acres, just outside the historic town of Cricklade in Gloucestershire. The new owners are investing substantial funds upgrading the complex to a full four-star rating, to include a new spa, plus renewed tennis courts, snooker/billiard room, gym, steam room, jacuzzi, swimming pool and golf course.

Operations Director, James Hemming is overseeing the overhaul and has already started updating the venue with a targeted launch date of March 2019. "Previous members had described the golf course," commented James, "as one of the best in the country and we are well on our way to re-establishing the appointments of Cricklade House to a very high status level that will command that same level of praise for our guests and members in the future."

Since October 2018, the 9 hole golf course has had significant refurbishment carried-out on the greens and, Cricklade House has already invested in 'top-end' precision machinery, enabling the Greenkeepers to avail themselves of the right equipment to ensure the best results. "We wanted to get the best equipment and the best local support for our golf course," added James, "and after research into what existed locally, it was an obvious choice that we decided on acquiring John Deere golf machinery from the local dealer, Tallis Amos Group. As soon as we made an enquiry, Bob Culverhouse came to visit us and was very helpful and knowledgeable on the immediate needs of our

golf course and hotel grounds. He was a very down-to-earth salesman and offered to help service some of the other brands of equipment we have here, so we didn't lose any time. TAG have proven to be a major benefit in helping us to get on top of the golf course refurbishment plan. I've got to be impressed."

Cricklade House acquired a new John Deere 7700A Precision Cut Fairway mower with a hydrostatic all-wheel drive traction system that reduces wheel slip on the undulating terrain. It also incorporates the very latest TechControl display which can be set-up to give precise cutting heights without skimming or damaging the playing surfaces. The seven cylinder cutting units are electronically monitored to compensate speed and cut-quality, and come with a highly accurate 'Quick Adjust' adjustment system ensuring the highest quality finish.

For the grounds maintenance and rough mowing, Cricklade House acquired the latest John Deere X950 Diesel mowing tractor with a 54in mowing deck.

"For the golf-course, we are already well on our way to total refurbishment," enthused James, "the service and installation back-up from TAG has been absolutely impressive and the equipment is performing even better than we imagined. I feel very positive that when we relaunch and members start taking to the greens again, our investors are going to take great pride in the refurbished facility and know that we have brought the course back to life, what will be arguably, one of the best nine-hole golf courses in the country."

# RECRUITING NOW!

Would you like to start a career with one of the UK's leading John Deere dealerships?

We are looking for Apprentice Agricultural and Turf Machinery Technicians to join our growing business.

Apply online by visiting [tallisamosgroup.co.uk/jobs/tag-academy](http://tallisamosgroup.co.uk/jobs/tag-academy)



## TINES AND BLADES

FOR ALL MAKES

The ground is hard on wearing metal this year – TAG can supply parts you require!

JOHN DEERE, VERTIDRAIN, GROUNDSMAN,  
RANSOMES, JACOBSEN, RYAN, TORO,  
GRADEN, AMAZON, WEIDENMANN  
& MANY MORE





## DOES WHAT IT SAYS ON THE TIN!

**W**ith 400 acres of arable and grassland at Orllham Farm near Ledbury in Herefordshire, GH & JM Samuel run a pedigree herd of Limousin cows and followers and, grow around 150 acres of winter wheat, winter barley and oil seed rape. With their grazing profile based on an efficient, rotating paddock system, together with their arable crops, the father and son team of Graham and Matt Samuel have recently invested in new fertiliser spreading technology which has proven to be an ideal choice.

“We don’t have the latest tractors bristling with GPS technology,” commented Matt, “but we wanted something that was very flexible, highly accurate and gave us detailed reports as to application rates for management recording.”

The Samuels discussed their needs with Tom Folly, their local TAG Area Sales Manager, Tom recommended they look at the latest Sulky X50 spreader, it did everything they wanted and had a clear reputation for accuracy and reliability.

“One thing that was clear,” added Matt, “was that there are some very expensive fertiliser spreaders on the market which are difficult to justify. Because our tractors are around ten years old, we would have had to invest additional resources, to be able to collect GPS and application rate data. Instead, TAG had the Sulky X50, a machine they have sold quite a number of and therefore had a lot of experience with. TAG have given us great back-up and are always there if we need them, so we knew we could rely on them. The benefit of the Sulky X50 spreader was that it included an onboard weigh scale system and also its own stand-alone data recording system - that we could use on any of our tractors, without making any big investments in

technology. When we’d finished the job - whether it be on our paddocks or on our arable crops, we can just take a note of the application data and transfer it to our own management records. It’s simple!”

The tractor-mounted Sulky X50 has a variable spread width of between 24m and 50m and a hopper capacity of 4200l. It works with or without an ISOBUS connection. With Matt’s machine, there is an integrated Vision console which indicates a guidance bar and spread pattern for confirmation of application. The spread pattern is such that the fertiliser flow is modulated from left and right and therefore provides a much more accurate application than traditional systems.

“We’ve found the Sulky to be very easy to operate.” commented Matt. “We’ve never had this level of accuracy before, especially with the border setting which stops wastage around the field perimeter. I can already see the financial benefit - particularly as we are working in a lot of small paddocks. As the machine collects its own data, I record that at the end of the job and it helps us keep very accurate records for future planning. This machine is going to last us a long time and what I like most about it is that it is very simple, you can just get on with it - no messing.”



Matt Samuel “the Sulky has its own on-board data recording system for accurate management records.”



# POTTINGER

## **The new TOP 762C CLASSIC twin rotor rake**

Joining the proven Pottinger TOP rotary rake range for the 2019 season is the all new TOP 762C CLASSIC twin rotor model. This centre delivery trailed twin rotor model offers all the features of the existing TOP 762C model, but at a lower price. The rugged central chassis, rear steering axle along with mudguards and lights are to be found on this new model. Infinite adjustable working width of 6.75 – 7.50 mtr allows adaptation to the every 5crop conditions and this can be achieved either mechanically or optionally hydraulic adjustment can be specified.

The durable TOP TECH PLUS rotors features 11 tine arms per rotor (as oppose to 13 on the standard TOP 762C model) and are fully serviceable thanks to their modular design. The large diameter cam track (42cm across) offers smooth and quiet operation, only needing greasing every 50 hours. Supporting each rotor as standard is a three wheel rotor chassis which can be added to with the optional MULTITAST leading jockey wheel system. This unique leading wheel system works in conjunction with the +/- 8 degrees of oscillation to allow accurate ground contour following ensuring forage contamination is minimised.

**The TOP 762C CLASSIC range starts from £20,295 and further details can be obtained from your local TAG branch.**

**762C - DEMO AVAILABLE  
CALL FOR DETAILS**



# Clean forage, Healthy cows.

PÖTTINGER TOP Rakes

- Equipped with TopTech Plus Rotors manufactured by PÖTTINGER
- Consistent shaped swaths thanks to large diameter rotor cam tracks
- Infinite hydraulic swath width adjustment from the tractor seat
- Available with a narrow wheel track of 2.55 mtr (optional)

PÖTTINGER Finance available to business users only. Subject to terms and conditions. Details upon request. Alois Pottinger UK Ltd, T: 01536 272220 info.uk@pottingeruk.co.uk, www.pottingeruk.co.uk



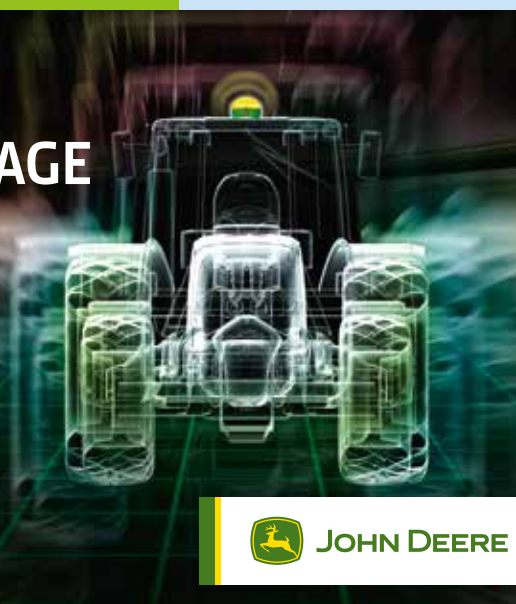
**PÖTTINGER**

# AUTOTRAC UNIVERSAL 300 PACKAGE

**AUTOMATED STEERING  
FOR MIXED FLEETS**

Approved for over 600 models from John Deere and other brands

**SPECIAL OFFER  
£8,000**



 **JOHN DEERE**



StarFire  
6000 – SF1



Gen4 4240 Display  
with AutoTrac  
Activation



AutoTrac Universal  
300 Steering Kit

# SPRING OFFERS

EXPERIENCE THE DIFFERENCE



JOHN DEERE



NEW JOHN DEERE  
R40 ROTARY MOWER

**TAG PRICE: £340**

RRP: £383

- RECOMMENDED MOWING AREA UP TO 700 M<sup>2</sup>
- 16" / 40CM CUTTING DECK
- 44 LITRE GRASS COLLECTION BAG
- PETROL BRIGGS & STRATTON ENGINE



NEW JOHN DEERE  
RUN 41 ROTARY MOWER

**TAG PRICE: £432**

RRP: £495

- RECOMMENDED MOWING AREA UP TO 800 M<sup>2</sup>
- 16" / 40CM CUTTING DECK
- 52 LITRE GRASS COLLECTION BAG
- PETROL BRIGGS & STRATTON ENGINE



NEW JOHN DEERE  
X106 RIDE ON MOWER

**TAG PRICE: £2,150**

RRP: £2,375

- RECOMMENDED MOWING AREA UP TO 4,000 M<sup>2</sup>
- 42" / 107CM SIDE DISCHARGE CUTTING DECK
- PETROL BRIGGS & STRATTON ENGINE



NEW JOHN DEERE  
X116R RIDE ON MOWER

**TAG PRICE: £2,830**

RRP: £3,230

- RECOMMENDED MOWING AREA UP TO 3,000 M<sup>2</sup>
- 36" / 92CM REAR DISCHARGE CUTTING DECK
- 300 LITRE GRASS COLLECTION BAG
- PETROL BRIGGS & STRATTON ENGINE

ALL PRICES  
INCLUDE VAT

 **Husqvarna**<sup>®</sup>

**NOW IN STOCK**



PETROL CHAINSAWS  
FROM £132 INC VAT



PETROL STRIMMERS  
FROM £120 INC VAT



PETROL HEDGE TRIMMERS  
FROM £185 INC VAT



ROBOTIC MOWERS  
FROM £895 INC VAT

**ASK US ABOUT THE NEW HUSQVARNA BATTERY RANGE!**



## YOU GET WHAT YOU PAY FOR!

Jack Barone - Director Zenith Nurseries (right)  
and David Holder - General Manager

**A**s one of the premium 'grower-packer' businesses in Evesham, Zenith Nurseries is a major grower and supplier of baby-leaf salads to the UK market. Being a grower-packer means they can harvest the crop on their own farms, wash, pack and dispatch in the same day so that wholesale customers receive the produce in the shortest possible time.

Based on 200 acres of field grown crops and 30 acres of protected crops, there is a lot of movement of produce, people and tools around the farm and Zenith have just invested in four new John Deere Gators to help them make the entire operation more efficient.

Jack Barone, one of the Directors of Zenith Nurseries said, "There is a constant requirement for movement of all kinds of kit around the site, as we have a very intensive production and processing facility and having the right machinery to save time and costs is very important to us. We've just bought four more Gators from Tallis Amos Group because they always look after us and the Gator gives us excellent service.

We've had Gators for ten years or more, we have tried other similar types of vehicle but the Gator is the best and we always come back to it."

Zenith keep their Gators for two years - which means they are covered entirely by their manufacturer's warranty. All the servicing and maintenance is carried out by TAG, so Zenith can concentrate on their crop production and leave the servicing to the experts.

General Manager, David Holder said, "We normally rack-up around five hundred hours every year on each of the Gators because we are moving people,

produce, tools, irrigation equipment all around the site every day. The Gator is small enough to get through restricted areas – in and out of greenhouses, yet big enough to cope with the demands of heavy payloads and it doesn't cause a lot of compaction.

The service that we get from TAG and the John Deere product is without doubt the best in the area. The guys at TAG will always respond to any call-out and our TAG Area Sales Manager, Richard Ainslie is very reliable and is always willing to help us out if we need it. We get on really well with them."

Zenith has just invested £2 million in a new 'purpose-built wash facility which is state of the art when it comes to efficient processing, washing and packaging of such crops as wild rocket, baby spinach, watercress, chards and baby lettuce. The facility now has three process lines which are all fully accredited and are considered some of the best in the country.

David Holder Added, "we are investing in expanding our facilities and always improving efficiency because our customers expect the best when they deal with Zenith Nurseries. By having the right machinery and equipment as well as being fully accredited, means that our customers are always the ones to benefit. With TAG and the John Deere product, you get what you pay for and it just seems to reflect the same kind of attitude that we have about always striving for quality."



THE AWARD WINNING ISUZU D-MAX  
**BACK2BACK**  
**WINNER**



**WINNER**  
PICK-UP OF THE  
YEAR 2018



**WINNER**  
PICK-UP OF THE  
YEAR 2019



*Alex Jones - Isuzu Sales Manager*



We're celebrating after winning a highly regarded award from Isuzu. We've been recognised for our outstanding performance and exceptional customer service. The awards were presented by The Isuzu UK Management Team to TAG Isuzu Area Sales Manager Alex Jones who was also awarded certification as an Isuzu Pick Up Professional Brand Specialist.

William Brown, Isuzu UK MD commented "Congratulations to Tallis Amos Group on their achievements, commitment and efforts to make 2018 a success for Isuzu. 2019 looks to be even more successful with many exciting model launches; and it will be a great year for the whole Isuzu family."

# TAG WEARING PARTS



**WEARING PARTS FOR ANY MAKE AND MODEL ARE AVAILABLE FROM YOUR LOCAL TAG BRANCH**

Genuine and Non Genuine - Power Harrow Blades, Plough Parts, Discs, Coulters

[www.tallisamosgroup.co.uk/online-parts](http://www.tallisamosgroup.co.uk/online-parts)



**HORSCH**



**LEMKEN**

**RABE**  
PASSION FOR EXCELLENCE



## FOCUS ON RTK



RTK is a guidance correction signal which improves the accuracy of standard GPS signals to give a pass to pass accuracy of +/- 2.5cm. The signal isn't blocked by hills, trees or tall buildings and gives accurate repeatability year after year. RTK is suitable for tasks that require a high level of precision and accuracy.

TAG offer access to one of the most robust and accurate RTK signals on the market. We're now able to offer it on all makes of tractor and combine.

Contact one of our Precision Ag specialists to find out how you could benefit from the TAG RTK Signal.

# USED MACHINERY

**FEATURED  
PRODUCT**



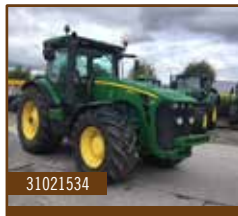
11021862

## John Deere 732i

2012

**£23,000**

3200 litre tank, steering drawbar, 2630 screen with section control activation, 12/24m booms, 420/85R38 tyres, boom lighting package.

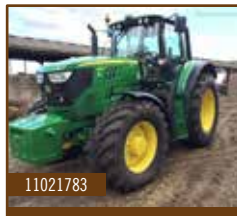


31021534

## John Deere 8295R

2010 **£72,000**

50K Autopower, deluxe cab with command arm. Front axle suspension, 4 ESCV, Active seat, Autotrac ready, 710/70R42 & 600/70R30 tyres, Pick up hitch, rear wheel weights, 5700 Hrs



11021783

## John Deere 6155M

2017 **£68,000**

Approx 1000 hours, 40K Autoquad, TLS, Autotrac ready, 114L/min hyd pump, 4 MSCV, 3 speed pto, 650/65R38 & 540/65R28 Michelin tyres, premium light package



11021784

## John Deere 6155M

2017 **£65,000**

Approx 560 hours, 40K Autoquad, TLS, Autotrac ready, 114L/Min hyd pump, 3 MSCV, 3 speed pto, 520/85R38 & 480/70R28 Michelin tyres.

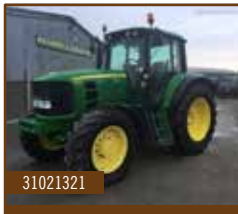


11023168

## John Deere 6130R

2017 **£64,000**

C/W JD 643R loader, Cab and Axle suspension, 520/70R38 & 420/70R28 new Michelin tyres, Autoquad Transmission, 3 Manual SCVs, TLS, Autotrac Ready, ISOBUS Ready, 1800 Hrs



31021321

## John Deere 6630 Premium

2011 **£38,500**

40K Powerquad, TLS front axle suspension, 3 MSCV, 520/70R38 & 420/70R28 tyres, Approx. 6500 hrs



21021150

## John Deere 5090G

2016 **£28,000**

487 Hours, 24F/12R Gearbox, Air Conditioned Cab, 4WD, Deluxe Seat, 2 SCV's, Electronic Lift Control + Remote Lift, Trelleberg 420/85 R30 & Trelleberg 320/85 R20 Tyres, Vertical Corner Post Exhaust, Pick Up Hitch, Beacon Light, Hydraulic Trailer Brakes, 110kg Weight

Call 01386 576 666 for more information. All prices Ex-VAT





**Massey Ferguson 6460**  
2005 **£25,000**

MFWD, front axle suspension,  
3 SCV, 80% tyres, Approx.  
3200 Hrs

51020466



**John Deere 6000 Series**  
**Kernal Processor**  
**£1,800**

To Fit Narrow Body Harvester

51023229



**Kramer KT357**  
2017 **£65,000**

3.5T 7M Lift, 40K Ecospeed, Kramer  
Headstock, Air-Con, Auto Hitch Trailer  
Coupling, Hyd Trailer Brake & Tipping  
Con., Load Stabiliser, Reverse Fan,  
Michelin 460/70R24, Ceasar Datatag,  
Ex Demo, 360 hours

51019374



**Pöttinger SERVO 35**  
2010 **£11,000**

5 Furrow Shear Bolt Plough, C/W Rear  
Discs, Skimmers, Hyd Front Furrow, Rubber  
Transport Wheel & 46W Bodies

31016097



**John Deere X370**  
2017 **£4,500 NO VAT**

c/w 48" A Side Discharge Deck Fitted  
With Switching Mulch Gate, Approx.  
50 Hours

11022385



**AL-KO POWERLINE**  
**£750 NO VAT**

Alko T14-85HD Concord  
Powerline Ride on Mower with  
Collector

41022184

**FEATURED  
PRODUCT**



11020534

**Stratmann GIGA**  
**VITESSE 3201**

2013

**£42,000**

710/45-R22.5 tyres, passive steering  
axle, 1.8m pick up, 45 knife cutting  
unit, 1777 load count, 275 hours.

Call 01386 576 666 for more information. All prices Ex-VAT

**FEATURED  
PRODUCT**



51018119

## John Deere 7400

2003

**£40,000**

C/W 630A Header Eng Hrs 4448, Drum Hrs 3069, 650/75R32 Michelin (50%), 480/80R28 Goodyear (25%), 3 Speed Hydro - 4WD, Ivloc Header Drive, 40 Knife Drum, Auto Shearbar Adjust, Rear SCV (No Hitch)

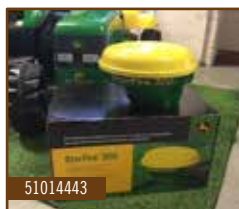


51019594

### John Deere 7780I

2015 **£139,950**

Prodrive 40Km Full, Autolube, 40 Knife Drum, Kernelstar Kp Elec, Adjustable, Advanced Header Control, 22 Q-Tatch Weights PUH, Additional Std Maize Kp, 650/R32 Mich, Harvest Lab, Eng Hrs 1692 + C/Head 1091, C/W 630C Grass Header -Yom 2014



51014443

### John Deere Starfire 300

2016 **£550**

Entry level Starfire 300 receiver, c/w magnetic mount and adapter plate.



31018464

### John Deere 644 Baler

2011 **£14,500**

25 knife Maxicut 2.2m pick up



83-07555

### John Deere 842

2010 **£9,750**

2m hi-flow pick up, 11781 bale count

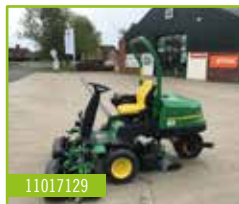


51013102

### Pöttinger 422 SINGLE ROTOR RAKE

2015 **£4,995**

4.2M Working Width, 3.3M Rotor Diameter, 2.29M Transport Width, 0-6 - 1.65M Swath Width, 12 Times Per Rotor & 4 Times Per Arm, New Stock Clearance Item



11017129

### John Deere 2500E

2016 **£26,450**

Ex Demo, 19.6HP 3 Cyl Yanmar diesel engine, 20x10 smooth ride tyres, 11 blade cutting units with grooved rollers and rear roller power brush

**Call 01386 576 666 for more information. All prices Ex-VAT**

**NEW FOR  
2019**



## JOHN DEERE EXPANDS PRECISIONCUT

### FAIRWAY MOWER RANGE!

The new John Deere 6000A Series PrecisionCut fairway mowers provide several features designed to increase machine and operator uptime. All three models (6080A, 6500A & 6700A) utilise a powerful 24.7hp (18.4kW) diesel engine, and boast several other premium performance and comfort features. Just like the existing John Deere A Model range, these latest mowers offer exceptional cut quality, even on slopes, thanks to the standard LoadMatch system, while the innovative eHydro transmission eliminates linkages between the foot pedals and the hydrostatic pump. Available Spring 2019

## TAG TEAM CHANGES



Darren Barber has recently been promoted to the role of Agricultural Service Manager from Workshop Foreman. Taking up the position in January Darren will be a familiar face to many. During his past 5 years with TAG he has brought a wealth of knowledge on John Deere equipment to the Bibury service team.



**JOHN DEERE**

**NOTHING RUNS LIKE A DEERE**



# DIVIDE & CONQUER

The speedy XUV590M Gator and agile X354 lawn tractor make for a great one-two punch across all terrains, whether you're moving materials at the camp or keeping the grass neat and tidy at home.

**CALL YOUR NEAREST BRANCH FOR MORE DETAILS**

**EVESHAM**

Hinton on the Green  
Evesham  
Worcestershire  
WR11 2QT

**BIBURY**

Meadowlands  
Bibury, Cirencester  
Gloucestershire  
GL7 5LZ

**LEOMINSTER**

Southern Avenue  
Leominster  
Herefordshire  
HR6 0QB

**NARBERTH**

Redstone Road  
Narberth  
Pembrokeshire  
SA67 7ES

**0345 222 0456**

**WWW.TALLISAMOSGROUP.CO.UK**