

SAVE £2,000

ON SELECTED JOHN DEERE BALERS

AUTUMN 2019

IN THIS ISSUE

**NEW 2500E GREENSMOWER
AT SALT FORD**

PAGE 7

**SIMCOCK CHOOSE KRAMER
TO SUPPORT PRODUCTION
INCREASE**

PAGE 12

**HARVEST PHOTO
COMPETITION**

PAGE 15



WELCOME

Welcome to our Summer edition of TAG Torque. Since it's launch back in 2014 the Sentinel has been keeping you up to date with the latest offers as well as providing articles highlighting the wide range of applications which our equipment gets used in.

Since then much has changed, our business has expanded and we are now supporting an even greater range of customers. On sports pitches, building sites, farmyards, and fields across South Wales and the West Midlands our customers are relying on us every single day to get their work done.

We threw down a challenge to our team, to find a name for our magazine which better reflects the wide range of activities that we support. Robin Davis our Turf Area Sales Manager for Gloucester & Swindon came up with the winning entry 'TAG Torque'. A name which we feel perfectly demonstrates the strength of the equipment and backup that TAG deliver.

In this edition of TAG Torque we've got some great special offers. Take advantage of the quieter turf workshops with discounts on Gator & Commercial Mower servicing (p. 5 & 10). We've also been able to extend our 4+44 0% finance & 4 year PowerGard protection offer on selected stock 5 series tractors (p. 16).

GENERAL DATA PROTECTION REGULATION (GDPR)

TAG is fully GDPR compliant, you are receiving this promotion as an existing business customer of TAG or because you opted in to receive marketing information. If you wish to update or check your preferences, please email marketing@tallisamosgroup.co.uk. Our updated privacy policy can be found at www.tallisamosgroup.co.uk/privacy-policy

For our agricultural customers, save up to £2,000 on our last few V451M balers (p. 6). Don't just think it's safe, know it's safe with TILLY trailer testing (p. 8). Looking ahead to the autumn we have some great offers on diet feeder servicing from £120 (p. 6). Why not get a head start on 2020 and book your Combine Expert Check now (p. 4).

In preparation for harvest this year our parts team have grown their parts stock by over £200k to 1.7m ensuring we have the parts to keep you working. We're also backed by the excellent John Deere parts network, if you need something that we don't have in stock, we can order up to 6.45pm for a next day delivery.

Our hard working after sales team are now operating Golden Harvest Support hours, with Evesham, Bibury and Leominster open from 8am – 7pm during the week, with emergency backup available at all depots between 7am and 9pm. With only one number to remember you can call 0345 222 0456 to reach your local depot.

Finally, don't miss out on our Harvest Photo competition, share the best snaps of our machines in action for a chance to win £50 (p. 15).



HEDGING THEIR BETS IS THE RIGHT DECISION

Wyevale's John Deere 6110R planting up to 50,000 plants per day.

Wyevale Nurseries in Herefordshire is one of the largest general transplant nurseries in the UK. They grow over 25 species of plants for hedging and forestry, approximately 8 million plants per year, for farms, estates, forestry, landscaping, local authorities, private landowners and the general public and, have been doing so for the past 20 years. Importantly, their key differentiator is that their extensive range of stock originates from native sourced seed or from home-grown hardwood cuttings.

Ray Jenkins is Wyevale's Transplants Production Director who has worked with the company for over 32 years and he has just taken delivery of a new John Deere 6110R tractor with a John Deere 623R loader, from the Tallis Amos Group (TAG). An important addition to the fleet to help them achieve their phenomenal output. "We've got over 200 acres of transplant nursery" commented Ray Jenkins, "which consists of one and two year old, field-grown, native shrubs, trees and hedging plants. That's over fourteen miles of seed beds sown every year from native sourced seed. To make that happen, we need reliable machinery and have had John Deere's before and always liked their reliability and the service back-up. So we know we are onto a good thing from the start."

This time, Ray decided that Wyevale would benefit by taking advantage of the John Deere PowerGard programme for extended warranty including full maintenance, because in Ray's words, "we are focussed on producing plants, not spending time on maintaining machinery. We just leave it to the professionals to take care of the tractors so we can get on with what we do best - grow and market plants."

So what was the decider in Ray choosing PowerGard extended warranty?

"With PowerGard," commented Ray, "we have a complete understanding of our annual running costs without any hidden extras. No nasty surprises from an unexpected breakdown. With this information, we can budget precisely for every cost element throughout the year. If we plan what we are going to produce and sell and, know how much it's going to cost to produce the product, then we can be precise on our financial performance. Plus, it means that the guys at TAG look after the machinery at every stage without our input. TAG have a great team of technicians who really know their stuff and they provide us with excellent and timely service and support. Nothing is too much trouble for them - and one other big factor is, PowerGard is so simple!"

The John Deere performs a wide range of duties on the Wyevale facility from cultivation, planting lifting crops, spraying, moving pallets, bucket work and general duties around the farm. "The John Deere has been extremely reliable for us over the years," added Ray, "we see the decision to go with PowerGard as a sensible business decision that I would definitely recommend to other users. It's a business decision that protects the user from the potential of high costs in unexpected breakdowns and the subsequent affect it would have on cash flow. What's really simple with PowerGard is that the cost can be added into the normal monthly finance budget, so it hardly gets noticed!"



EXPERT CHECK: NEXT SEASON IS RIGHT NOW

OFFER ENDS 31 JANUARY 2020

Preparation is everything – and it's available at a fixed price. Put your combine through our thorough point-by-point technical check to increase your uptime and ensure peak performance.



EXPERT CHECK FOR T-SERIES COMBINES

Also includes a inspection of the header

£400*



EXPERT CHECK FOR W-SERIES COMBINES

Also includes a inspection of the header

£360*



EXPERT CHECK FOR S-SERIES COMBINES

Also includes a inspection of the header

£440*

* Please contact your Service Manager for the Expert Check, valid for work booked in before 31 January 2020. This is a prerequisite for Harvest Promise on combines not older than 7 years. We reserve the right to charge for cleaning if necessary. Prices are subject to VAT@20%.

**TAG SERVICE
OFFER**

15% PARTS & LABOUR DISCOUNT

ON ALL JOHN DEERE COMMERCIAL MOWING EQUIPMENT BOOKED IN FOR
FULL ANNUAL SERVICING BEFORE 30TH NOVEMBER 2019



Our technicians are John Deere trained and have access to the latest factory information which helps them to detect any potential problems before they occur to guarantee the best performance from your equipment for many seasons to come.

Confirmation will always sought for any additional repairs that maybe needed over and above the agreed service programme, before any work commences.



CALL YOUR LOCAL SERVICE
DEPARTMENT ON 0345 222 0456



DIET FEEDER SERVICE FROM £120*

Servicing of your diet feeders and wagons can help to reduce breakdowns and ensure maximum milk yield potential

Servicing includes:

- Main drive gearbox oil change/check
- Two-speed gearbox (where fitted) oil change/check
- Full greasing of all points including PTO shaft
- Check hydraulic system and performance test
- Check brake systems for performance, wear/adjustment
- Full testing of electronic weigh-cells and control boxes
- Tyre check for damage and correct inflation pressures
- Test and check conveyor and feeding system for accuracy
- Adjust chain and belt drives
- Check for absent blades, sharpness and damage



*Excludes VAT and replacement parts, Offer Expires 30/11/19



COURSE CARES ABOUT THE ENVIRONMENTAL IMPACT

Course Manager Darren Moxham "I need a precision mower to do what I want, whenever I want it, and the John Deere 2500E does it every time."

Since the year 2000, Saltford Golf Club, near Bristol, has had seven John Deere 2500 Diesel Ride-on Greens Mowers - 4 Bs and 3 Es and they still run four of the originals to this day.

They have just invested in a second John Deere 2500E from Tallis Amos Group (TAG) because in their experience - it's the best precision greens mower on the market and can't be beaten! The 90ha, 18 hole course with a driving range and six-hole academy was founded in 1904 and is considered one of the finest, year-round courses in the West country. The club has around 650 private members with many visitors through the summer months. During June this year John Deere UK chose to hold their Regional Golf Tournament at the club which received endless compliments from all who played.

Course Manager Darren Moxham has been with Saltford Golf Club for 19 years, 11 of those as course manager and it was his choice to continue investing in the John Deere 2500E because "We've used them for years and they have never let us down, giving us a perfect finish, every time."

Darren uses two key 2500Es for the greens, sharing the 18 holes between them then utilising the retiring precision mowers firstly to the tees and then in the long term moving them on to utility work. Darren added "Even after seven years hard work, the John Deere's maintain a high level capability and reliability which would be silly to trade-in when they make excellent tees and utility mowers, for very little cost. We decided to move

on to the 2500E - with electrically powered cylinders, because they use far less fuel than the B version and environmentally, they are better for our greens. We have never had an oil hose break or oil spillage on the greens since we started using John Deere's but by going hybrid we are reducing the potential further because we owe it to our customers and to the planet."

Apart from the John Deere 2500B and Es, Saltford also run 2 Progators, Turf and XUV Gators plus a 3038R Compact tractor.

"We used to buy our John Deere's from BS Mowers in Bristol and their service was phenomenal but we were a little concerned when they were taken over by TAG, but I can honestly say that the back-up from TAG is even better. Their sales representative, Nick Wilson is an ex Greens Keeper and certainly knows his stuff"

"I've looked at the other machines on the market," added Darren "and they just don't compare with the 2500E which now comes as standard with tournament blades, so I can tighten the cut and speed-up the greens whenever I want to. I also dislike sitting on a precision mower with the cylinder spinning right under my feet - not like the John Deere, where I feel both comfortable and safe.

"I need a precision mower to do what I want, whenever I want it, and the John Deere 2500E does it every time. Couple that with the service I get from TAG - and "I have a tournament winning combination every single time."



**SAVE £2,000!
ON LAST FEW STOCK
V451M BALERS**

0% FINANCE AVAILABLE!*

ASK YOUR SALES REPRESENTATIVE FOR MORE DETAILS

* Discount valid on stock machines only, Finance available on 50% of retail, available in the UK for business purposes only, subject to acceptance, conditions apply. £2000 discount offer expires 23/8/19

TRAILER TESTING

Don't think it's safe, Know it's safe.
Regular testing of your trailer ensures the safety of your operators and those around them



Tilly Trailer Testing can be carried out at any of our 4 branches or onsite/farm and involves an 18 Point inspection, including brakes, hydraulics, suspension, drawbar, axles and lighting all carried out by a TillyPass authorised technician.

2 Wheel Trailer – £150

4 Wheel Trailer – £170

Pass certificate valid for 12 months, Annual testing is recommended, prices are subject to vat & certification costs



EXTENDED WARRANTY

WIN FREE SERVICING FOR A YEAR!

Complete protection against unexpected repairs bills with our complete range of extended warranty options. Available to suit all budgets from basic cover against major component failures through to comprehensive cover including fixed price maintenance.

Purchase any New or Used extended warranty package from us and take delivery of your machine between the 1st August 2019 – 25th October 2019 to be entered into a draw for a chance to win free Servicing for a year!

Ask your sales representative how PowerGard and GreenShield Protection packages can help protect your equipment



BEST SELLERS



Husqvarna 120i



- 12" Cutting Bar
- Includes battery and charger
- Cordless 36v Lithium Ion Battery

TAG PRICE £200 RRP: £250

Husqvarna 120 Mark II



- 14" Cutting Bar
- 1.4 kW Petrol Engine
- X-Torq® engine technology

TAG PRICE £110 RRP: £125

Husqvarna 455 Rancher



- 18" Cutting Bar
- 2.6 kW Petrol Engine
- X-Torq® engine technology

TAG PRICE £425 RRP: £492

Stihl MSA120



- 12" Cutting Bar
- Includes Charger and Battery
- Cordless 36v Lithium Ion Battery

TAG PRICE £190 RRP: £208

Stihl MS180



- 14" Cutting Bar
- 1.4 kW Petrol Engine
- Anti Vibration System

TAG PRICE £165 RRP: £209

Stihl MS271



- 18" Cutting Bar
- 2.6 kW Petrol Engine
- Anti Vibration System

TAG PRICE £475 RRP: £560

All prices are subject to vat. Offers expire 30/11/2019

SPECIAL OFFER



BUY ONE GET ONE HALF PRICE ON ALL GENUINE STIHL CHAINSAW CHAINS AVAILABLE AT ALL BRANCHES



**TAG SERVICE
OFFER**

JOHN DEERE GATOR SERVICE ONLY £249!

ON ALL GATORS BOOKED IN FOR FULL ANNUAL SERVICING BEFORE
30TH NOVEMBER 2019



Our technicians are John Deere trained and have access to the latest factory information which helps them to detect any potential problems before they occur to guarantee the best performance from your equipment for many seasons to come.

Confirmation will always sought for any additional repairs that maybe needed over and above the agreed service programme, before any work commences. Price is subject to vat



WOULD YOU LIKE A CAREER WITH ONE OF THE UK'S LEADING JOHN DEERE DEALERSHIPS?

Our mission is simple, to supply and support quality products to land based customers, backing them up with local in-house expertise.

Tallis Amos Group (TAG) operate 4 outlets across Wales, the West Midlands and Bristol, employing over 125 people.

As one of the original John Deere dealers appointed back in 1966 we've got more than 50 years' experience in supporting customers with products from many of the best brands in the industry.

Still a family business at heart, our customers enjoy the personal level of service we offer them, and you can expect an exciting working environment, with plenty of opportunity for continued development as part of the TAG team.

www.tallisamosgroup.co.uk/careers



TAG TRAINING AND TESTING

MEETING YOUR COMPLIANCE NEEDS

When it comes to making sure your machines are safe to use and kept within the law now has never been more important. We are pleased to be able to offer a comprehensive range of Operator Training Courses and Machinery Testing services.

We are a recognised and approved NSTS Sprayer and Spreader Test Centre, Through Examination Test Centre and as well as a UK Rural Skills Approved Training Provider. Services available such as;

- Forklift Training and Annual Testing
- Telehandler Training and Annual Testing
- Tractor Operator Training
- Commercial Mower Operator Training
- Workshop Equipment Testing

Please call Pete Gash our Training Manager on 0345 222 0456 option 2. for more information and details on the full range of Training courses and Testing services that we can provide.





Fred Simcock "We're aiming to push production to fourteen thousand litres"

CAPACITY FOR BOOSTING PRODUCTION

In just a couple of weeks, the entire dairy herd management and production process at Woofields Farm, Coddington near Ledbury is going totally robotic.

Fred Simcock farms around 1000 acres, growing 200 acres of first wheats, 384 acres of forage maize and milks 600 head of Friesian Holsteins with 400 followers. Cows are housed year round and fed a balanced ration, based on grass and maize silage. It's a very progressive unit, with a lot of building and facility construction preparing the dairy system for robotic feeding, scraping, feed pushing and milking. Currently the herd average is at 10,300 litres and a butterfat of 3.9.

"Our future plan" commented Fred Simcock is to boost the herd to 650 milkers and through a strategic feeding plan, increase yield in the first instance to twelve thousand litres. We were in Italy recently at a dairy using the same robotic system that we are installing and they were achieving over fourteen thousand litres, so that is our ultimate target."

All cultivation work, forage harvesting and muck spreading is carried out by the Woofields Farm team and Telehandlers are used widely for every element of materials handling. Over the years Fred has tried several brands, they've kept the older ones for general use but the acquisition of the latest Kramer 357 from Tallis Amos Group (TAG) has been a bit of an eye-opener.

"We've had the JCB, the Merlo and the Claas, which was produced by Kramer," added Fred. "They all have their good points and bad points but this latest addition to the fleet, which already has fifteen hundred hours on it, has proven to be the best we've had. It's

got the best headstock out there and we've never seen any wear on them - and this is our third machine. The power, both in the engine and the hydraulics on this new Kramer is unbelievable. It just keeps going and I'm very pleased with it."

Jamie Price is the operator on the Kramer, so what are his thoughts? "It is so comfortable," commented Jamie, "I could sit in this all day and never feel tired, it is a remarkable machine, better than anything we've had before. It's just about the right size for us, very manoeuvrable and easy to use, especially when swapping over attachments and implements - which helps us get through jobs quicker, resulting in higher productivity. The industrial tyres are just about the best ever - they go anywhere and do anything - perfect for all our jobs."

This year's forage season has started well for Woofields Farm with first-cut silage analysis coming back at 21.2 average protein and between 28-30% DM. All the muck is returned back to the field using an umbilical system and Fred finds that he is not needing to purchase Phosphate or Potash and his Nitrogen costs are less than two-thirds of what it used to be. He has the soil analysed every two years to ensure he is maintaining the perfect growing medium.

"We've got a good system going here," added Fred, "TAG look after our Kramer for us. They are a very good firm, you just can't knock the team at Leominster. They are always supportive, always do a good job and look after us and our equipment. We are a progressive farm and always want to make the right choices. TAG and the Kramer have been a perfect combination."

69 PLATES NOW IN STOCK

ISUZU
THE PICK-UP
PROFESSIONALS

THE AWARD WINNING ISUZU D-MAX BLADE
**WORKS HARD,
PLAYS HARDER**



Great Deals on 69 Plates!
Contact your local TAG Branch for more information

HARVEST ESSENTIALS



John Deere XtraTwine HD Plus
2600m per pack

Specially designed for use in balers in the 'Extra' high-density sector, for making extremely dense bales, or when baling in extreme conditions high temperatures, low humidity.



John Deere XtraTwine Plus
2800m per pack

The best performing option for all crops and balers where high density is required. Use it for silage and for high density hay and straw bales.



John Deere XtraTwine Long
3000m per pack

A standard big bale twine, suitable for use in all crops and in normal baling conditions.

Need assistance of which type of twine and net and how much you need?
visit www.tama-uat.co.uk/tama-assist

A DAY WITH...

Mike Randall – Agricultural Technician,
Bibury Branch.



Mike started his John Deere apprenticeship with us back in 2010 and has been a valued member of the team ever since.

I travelled to my first job of the day for 8am which was a tractor located near Tewkesbury. The report from the previous evening is that the tractor had lost forward drive and was intermittent in reverse.

The operator is not on site and the tractor is located on the edge of a field. After arriving and turning on the ignition I was able to retrieve an error code from the onboard diagnostic system. After consulting Service Advisor (John Deere's technical manuals) I could see that there was a possible issue with a solenoid on the Gearbox. Further confirmation was made by checking the resistance in the solenoid which proved it had failed. A check on our parts system showed that we stocked the solenoid at our Evesham branch. A short trip over to Evesham to collect the part then fitting it to tractor allowed the customer to be on his way again.

My next job is sent through on my phone via an electronic job card, a tractor with a loss of engine power located not too far away. When I arrived, I find it would not start so connected the laptop to the tractor, it showed that there was a lack of fuel pressure from the high pressure pump. With this quick diagnostic a new pump is ordered and will be delivered over night ready to revisit the tractor first thing the following morning.

Travelling back to Bibury it is now lunchtime. A half hour lunch stop and a phone call came into the office that a customer was having trouble getting his tractor engine to rev up correctly. Having seen that the tractor had only recently been delivered I found out he was still not familiar with all the settings on the Gen 4 screen. As the customer had taken out a JDLink subscription I am able to remotely connect to the screen in his cab and see that the tractor was in engine cruise mode. I could help the customer out of his predicament and also give him a few helpful pointers along the way.

The last job of the day came in also via JDLink with an error code automatically emailed to my Service Manager. The job was a combine which was constantly dropping threshing speed. The diagnosis of the error code was that it was a possible fault with the speed sensor. We had a speed sensor in stock and following directions from JDLink to the combine I was able to remove the sensor and replace to fix the fault with a minimum of downtime for the customer.

I really enjoy the sense of satisfaction that comes with being able to fix a customer's problem, and with such a wide range of equipment sold at TAG there's never a dull day and always something new to learn.

LATEST OFFERS ON TILLAGE PARTS

TINES



Maschio dm radipo
Genuine £11



Maschio dm 12mm
Genuine £8.50
Compatible £5.50



Amazone Ke Kg
Genuine £18.50
Compatible £12



Pottinger lion
Genuine £14

PLOUGHS/DRILLS



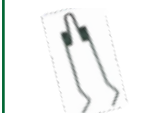
Dowdeswell
reversible point
Genuine £7



Gregoire Besson
reversible point
Genuine £8.75



Accord coulters tip
Genuine £3.75



Accords harrow
Genuine £4

CULTIVATION



Horsch point
Genuine £7

Horsch point
mulch mix gen
Genuine £11
Compatible £6.50

**GENUINE &
COMPATIBLE
AVAILABLE**

WIDE RANGE OF MAKES AND MODELS AVAILABLE

All prices are subject to vat. All of the above are shown as examples and prices will vary. Offers expire 30/11/2019

HARVEST PHOTO COMPETITION

Tag us in your John Deere Harvest pictures on any of our social media pages to be in with the chance of winning a £50 TAG Voucher! Winner will be announced 1st October 2019

Facebook @Tallisamosgroup
Instagram @Tallisamosgroup
Twitter @Tallisamosgroup

Steps:

1. Upload your photo and tag us in the post by searching @Tallisamosgroup
2. In the post also use the hashtag #TAGHarvest2019

T&C's: Photo should feature a John Deere or Kramer machine, please ensure that you have permission to share the photo before posting. Winner will be selected on the 1st October and announced via all our social media pages.



FANTASTIC FOUR

Small but mighty, we've got some great offers on our four bestselling 5 series tractor models. You'll need to act fast as these offers are only available on stock tractors..

**4+44 - 0% FINANCE*
+
4 YEARS POWERGARD
PROTECTION!
OFFER EXTENDED**



5100M

SPECIFICATION

- 32F/16R PowrReverser Hi-Lo (40k)
- 420/85R34 & 340/85R24 Mitas
- Air Con
- 3 spool, 3 speed PTO & Electric hitch control
- 4 work lights & 2 beltline lights

SPECIFICATION

5115M

- 32F/16R PowrReverser Hi-Lo (40k)
- 420/85R34 & 340/85R24 Mitas
- Air Con
- 3 spool, 3 speed PTO & Electric hitch control
- 4 work lights & 2 beltline lights



5100R

SPECIFICATION

- 16/16R CommandQuad (40k)
- 540/65R38 & 480/65R24 Michelin
- Air Con
- 3 spool & 3 speed PTO
- 4 work lights & 2 beltline lights

SPECIFICATION

5125R

- 16/16R CommandQuad (40k)
- 540/65R38 & 480/65R24 Michelin
- Air Con
- Front axle & cab suspension
- Command arm
- 3 electronic spool valves & 3 speed PTO
- Front PTO Ready



Photos for illustrative purposes only, actual specification may vary. *Finance available for business purposes in the UK only, subject to status, conditions apply. 4+44 monthly payments available on 50% of retail price. Offer may be withdrawn at any time and is available whilst stocks last. 1) PowerGard Protection 1+3 500 hours / year.

ASK YOUR SALES REPRESENTATIVE FOR MORE DETAILS

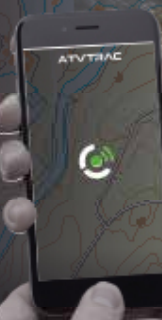
0345 222 0456



Revolutionising ATV Security

A discreet ATV tracker that monitors the movements of your asset in real-time, allowing you to view status and usage history 24/7 with notification of unauthorised movements.

www.atvtrac.co.uk



On tractor policies ATV Trac by BikeTrac will get 12.5% discount, along with CESAR's 12.5% - having both will get 25% discount with NFU

TAG OFFER, SUPPLIED & FITTED FROM JUST £399 + VAT

Protecting your ATV, UTV, 4x4, Farming Equipment and Machinery



So how does it work?

Installation

Through our experienced dealer network, your unit will be professionally and covertly installed, with true peace of mind.

Registration

Once your device has been installed, simply complete the registration process and you'll be protected within minutes.

Tracking

Once you've registered you can log-in 24/7 to check your asset's real-time location, battery level, journey history and more.

Device Advantages:

- Personal safety with ATV OVER
- Enhanced employee welfare when lone working
- Advanced ATV security including Geo-Fencing
- GPS & RF based unit, track in real time and can be found in vans, containers
- 24/7 web access
- Transferable between assets

Endorsed by



Get in touch: If you would like to know more information about ATVTrac or anything else please don't hesitate to get in touch.

hello@atvtrac.co.uk | +44 (0) 1327 317 980 (Lines open 9am - 5:30pm)



GROESO I RTK PRECISION!

WE'VE EXTENDED OUR RTK GUIDANCE NETWORK - NOW AVAILABLE ACROSS SOUTH WALES - CALL FOR DETAILS

2.5CM PASS TO PASS ACCURACY

REPEATABILITY, NO SATELLITE DRIFT

FAST SIGNAL ACQUISITION

COMPATIBLE WITH ALL M-RTK GUIDANCE SYSTEMS

0345 222 0456

WWW.TALLISAMOSGROUP.CO.UK



REACH NEW HEIGHTS WITH KRAMER

**NEW
KL60.8**

Tallis Amos Group can supply the full range of Kramer Telehandlers and Wheeled Loaders.

- Telehandlers with payloads ranging from 2.7 – 5.5 tonnes lifting up to 9 meters
- Wheeled loaders from 1.5 – 10.5 tonnes



The most powerful wheel loader in its class, the KL60.8 Kramer ticks all the boxes when dealing with heavy duty tasks.

- 134hp Deutz 3.6l Engine
- Stacking payload 3,900kg
- Bucket tipping load 5,600kg
- Air Conditioning
- New ecospeed transmission

FARMSIGHT TRACTOR SUPPORT PACKAGES

You need machinery you can count on, equipment that's ready to go when you are. Using the latest technology to reliably deliver outstanding productivity day after day.

We understand that it's about more than just buying the best machinery, you also deserve the best support and backup.

That's why we've been working hard to develop our FarmSight support packages, a range of carefully tailored support services designed to help you get the most out of your new tractor for many years to come.

Because we all believe that exceptional service should come as standard, we're including our Select Service Package free of charge with every tractor purchased.



Included as standard for five years with all tractor purchases.



Upgrade to our Premium package with the purchase of PowerGard.



Upgrade to our Ultimate package with the purchase of TAG Premium Care and RTK.



Included for 12 months with the purchase of any stand-alone Precision Ag components.

What's Included?	Select	Premium	Ultimate	Precision
Inspection, Maintenance & Uptime Support	Machinery Maintenance Management	✓	✓	✓
	Remote machine monitoring		✓	✓
	Uptime Guarantee			✓
	Expert Check - End of Warranty Inspection	✓	✓	✓
Machine Optimisation	Professional Installation	✓	✓	✓
	Annual in depot refresher & update training	✓	✓	✓
	Annual in field training / optimisation			✓
	Fuel guarantee review		✓	✓
Precision Ag Support	Annual machine performance report		✓	✓
	Phone & Email Support		✓	✓
	Precision ag software updates—in depot		✓	✓
	Remote display access		✓	✓
Agronomic & Job Optimisation	MyJohnDeere initial setup (Machines, Clients, Farms & Fields)		✓	✓
	MyJohnDeere follow-up call		✓	✓
	MyJohnDeere ongoing backup		✓	✓
	MyJobsConnect		✓	✓
	MyJohnDeere agronomic data optimisation		✓	✓
	MyJohnDeere optimisation event		✓	✓

USED MACHINERY



John Deere W540 Hillmaster

2011

£70,000

1193 Hours, JD 618R Header and trolley, Greenstar ready, Straw chopper, Rear hitch/drawbar

31024152



Browns Post Hammer

2018 **£5,500**

Hydraulic Swinground, Cat 2 linkage, 200kg hammer

31021211



Browns Saw Bench

2017 **£7,250**

PTO Driven, 760mm Blade, Fully guarded

31021213



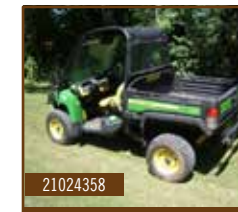
John Deere 2056 Level Land

1994

£19,995

2991 Hours, JD 816R Header, 5 walker Chop & Chaff spreader, Air Con, Performance monitor

31024459

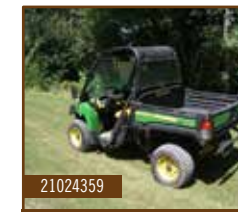


John Deere XUV 855D

2017 **£10,000**

1071 Hours, Dlx Canopy, Road Registered, Bucket Seat, Electric Kit

21024358



John Deere XUV 855D

2017 **£10,000**

1000 Hours, Dlx Canopy, Road Registered, Bucket Seat, Electric Kit

21024359



Kuhn Venta LC302

2008 **£10,950**

3M Power Harrow, Comb drill, Pre em & Bout Markers

31020816

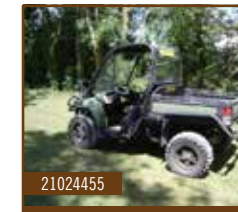


Teagle Topper 5

2017 **£750**

5ft Rotary

51024306

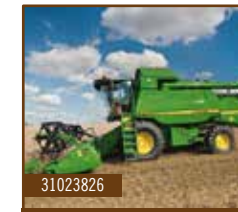


John Deere XUV 855D

2015 **£7,750**

2114 Hours, Dlx canopy & Cargo Box, Windshield kit, Road Registered, Front worklights, H/ duty brush & Fender guards

21024455



John Deere W540 Level Land

2012 **£75,000**

750 Hours, JD 618R Header, Chop & Chaff, Lat Tilt Feeder House, Dual Cylinder Drive, Electric adjust sieves

31023826



Accord

2006 **£5,000**

4m folding tine drill

31022109



Maschio DM3000

2002 **£4,500**

3m HD Power Harrow, Steel Packer, A Frame for drill

31020000

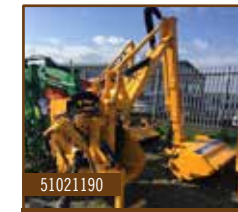


John Deere W660 Hillmaster

2010 **£75,000**

1473 Hours, JD 622 Header on trolley, 30k, A/Trac & Monitoring ready, 800/480 Tyres, Air Seat, Electric Mirrors, Lateral Tilt Feeder House, Chop & Chaff

21023576



Shelbourne Reynolds 660T

2017 **£17,000**

EX-DEMO, 6m telescopic boom, new 1.2m head, T flails

51021190

Call 01386 576 666 for more information. All prices Ex-VAT

Call 01386 576 666 for more information. All prices Ex-VAT

EX HIRE JD TRACTORS

REF	MODEL	DESCRIPTION	APPROX HOURS	PRICE
HY68XUE	8370R	50K, IVT, ILS, COMMAND ARM 5x E-SCV'S, ACTIVE SEAT, CAT 4 DRAW BAR, AIR BRAKES, JOYSTICK	675	£159,950.00
DV18EBN	7310R	50K, IVT, TLS, COMMAND ARM, HCS, 5x E-SCV'S, F/L, AIR BRAKES, JOYSTICK	1200	£136,000.00
HS17DKY	7310R	50K, IVT, TLS, COMMAND ARM, 5x E-SCV'S, ACTIVE SEAT, AIR BRAKES, JOYSTICK	1550	£125,000.00
HV18DVN	7290R	50K, IVT, TLS, COMMAND ARM, 5x E-SCV'S, ACTIVE SEAT, F/L, AIR BRAKES, JOYSTICK	1200	£122,500.00
VF17DCX	7270R	40K, IVT, TLS, COMMAND ARM, HCS, 5x E-SCV'S, JOYSTICK	1000	£119,500.00
DP18LFB	6250R	50K, A/P, TLS, COMMAND ARM, COMM PRO, HCS, A/TRAC, 4x E-SCV'S, CLIMATE, AIR BRAKES, JOYSTICK, F/L & PTO	565	£134,000.00
DC18JBY	6215R	50K, A/P, TLS, COMMAND ARM, HCS, A/TRAC, 4x E-SCV'S, CLIMATE, AIR BRAKES, JOYSTICK, F/L & PTO	1000	£114,250.00
GK67WEJ	6215R	50K, D/DR, TLS, COMMAND ARM, HCS, A/TRAC, 4x E-SCV'S CLIMATE, F/L, AIR BRAKES	850	£104,750.00
HT18XEE	6195R	50K, A/Q, TLS, HCS, A/TRAC, 3x E-SCV'S, CLIMATE, F/L, AIR BRAKES, JOYSTICK	875	£99,500.00
DV18WKK	6175R	50K, A/P, TLS, COMMAND ARM, HCS, A/TRAC, 4x E-SCV'S, CLIMATE, F/L, AIR BRAKES, JOYSTICK	700	£104,750.00
DS18TF	6175R	50K, A/Q, TLS, HCS, A/TRAC, 4x E-SCV'S, AIR BRAKES, JOYSTICK	800	£92,000.00
VA18TWL	6155R	50K, A/P, TLS, COMMAND ARM, HCS, A/TRAC, 4x E-SCV'S, CLIMATE, F/L, AIR BRAKES, JOYSTICK	720	£93,000.00
DG67WCJ	6155R	50K, A/P, TLS, COMMAND ARM, HCS, A/TRAC, 4x E-SCV'S, CLIMATE, AIR BRAKES, JOYSTICK, F/L & PTO	1350	£90,000.00
DN18UEP	6155R	50K, A/P, TLS, COMMAND ARM, HCS, A/TRAC, 4x E-SCV'S, CLIMATE, F/L, AIR BRAKES, JOYSTICK, NEW TYRES	2450	£81,500.00
HS18FZU	6155M	40K, A/Q, TLS, MCS, A/TRAC, 3x MSCV'S, A/CON, HIGH LIFT, AIR BRAKES	1750	£61,750.00
HN67OCW	6145R	50K, A/Q, TLS, HCS, A/TRAC, 3x E-SCV'S, AIR BRAKES	1200	£73,000.00
VO67EYM	6130R	40K, A/Q, TLS, HCS, ISOBUS, 3x MSCV'S, 634R LOADER	600	£72,000.00
HS17DLN	6130M	40K, A/Q, TLS, MCS, 3x MSCV'S, AIRCON, HIGH LIFT, HD BRAKES, LG PUMP	1250	£48,500.00
DV18VCO	6120M	40K, A/Q, TLS, MCS, 3x MSCV'S, AIRCON, HIGH LIFT, AIR BRAKES, HD BRAKES, LG PUMP	875	£48,500.00
HV18UDW	6110M	40K, A/Q, CRP, TLS, MCS, 3x MSCV'S, AIRCON, HIGH LIFT, AIR BRAKES, HD BRAKES, LG PUMP	800	£50,650.00



Buy now pay December:
2 Annual payments at 0%
commencing December 2019

More success with POTTINGER

- Precision seed placement – Quick & even germination
- Isobus compatible & variable rate ready as standard
- Adaptive ground hugging – Consistent seed depth
- Option of smooth, scalloped or low disturbance WAVEDISC front tools



Demo Available
call for details

Earth shattering flexibility

The SYNKRO cultivator range

- Moves all the soil across it's entire working width
- Choose between configuration with two or three rows of tines
- Working depths down to a maximum of 30 cm
- Available in working widths from 2.5 to 6 mtr

T: 01536 272220, info.uk@pottingeruk.co.uk, www.pottingeruk.co.uk
PÖTTINGER Finance available to business users only. Subject to terms and conditions. Authorised and regulated by the Financial Conduct Authority only in respect of agreements regulated by the Consumer Credit Act 1974.

PÖTTINGER

**Trusted by the best
courses on earth**



JOHN DEERE

NOTHING RUNS LIKE A DEERE

CALL YOUR NEAREST BRANCH FOR MORE DETAILS

EVESHAM
Hinton on the Green
Evesham
Worcestershire
WR11 2QT

BIBURY
Meadowlands
Bibury, Cirencester
Gloucestershire
GL7 5LZ

LEOMINSTER
Southern Avenue
Leominster
Herefordshire
HR6 0QB

NARBERTH
Redstone Road
Narberth
Pembrokeshire
SA67 7ES

0345 222 0456

WWW.TALLISAMOSGROUP.CO.UK