



THE LATEST OFFERS, NEWS & USED EQUIPMENT

# NEW TRACTORS FROM WATERLOO

SPRING 2020

## IN THIS ISSUE

LIMITED PRE-SEASON  
GRASSLAND OFFERS  
PAGE 3

RIDE ON MOWER OFFERS  
PAGE 7

SULKY SPREADER  
SLASHES FERTILIZER  
COSTS  
PAGE 13

THE LAND IS OUR FIELD



# WELCOME

**W**elcome to our Spring edition of TAG Torque, this month our magazine is jam packed with fantastic offers to help you get a head start on 2020, whilst making some great savings as well.

Last year we saw record breaking temperatures in February allowing our Ag and Turf customers alike to get a great start to spring work. It's not looking like these temperatures will be repeated this year, with a huge backlog of work to be completed when things start to dry up we're expecting our workshops to be busy. Why not plan ahead and get servicing work booked in ahead of time?

We've got a great offer of 10% off Pottinger servicing, make sure your forage wagon, rakes and tedders are ready to go when you are. As well as the discount we're offering a super stylish Pottinger watch for the first 5 bookings (page 12). Talk to your local service manager for more details.

The Pottinger offers don't stop with servicing, we've also got some exclusive offers on tillage and grassland kit, with savings of over £5,000 on some items. Check out page 3 for more details. You can also read about how the Lewis' Pottinger Torro wagon helps them to keep milk production costs low on page 4.

As we approach a new future outside of the European Union there are many questions around the future of agricultural support payments. The latest agricultural bill looks certain to link payments to environmental measures. Whilst it will take some time for the finer detail to be worked out, our Precision Agricultural solutions, with technology such as automated guidance and, variable rate product application looks set to become an even more important tool in ensuring inputs are minimised and precisely targeted. Increasing both profitability and

minimising environmental impacts. Find out how you can add precision guidance to your machinery in our 'Getting started with Precision Ag & Turf' article on page 15.

As always, costs are a key focus for many businesses, find out how contractors GC & JM Norgrove managed to save money on fertilizer as well as increasing application accuracy their new X40 Sulky fertilizer spreader (page 13). Regardless of make, we can help make sure that you apply your spring fertilizer accurately and meet farm assurance requirements with our offer on spreader testing from £190 (page 14). Alternatively, if you're looking to update your spreader turn to page 6 to see our extra special offers on the last few 2019 priced Sulky spreaders.

On Page 18 we've got some top tips on getting the most out of your commercial mower, making sure that it's ready to go when the grass starts to grow. For smaller areas of grass we've also pulled together some specials on our best selling residential ride on mowers, from the entry level X106 through to the all conquering X590 – If you're looking to upgrade your mower, give our sales team a call (page 7).

If you thought that a field-based sales representative was a life of tea, biscuits and burger vans, take a look at our latest in our 'Day with...' series (page 16). We follow Rich Morgan, an Agricultural Sales Representative based out of our Bibury branch, to see what a typical day looks like for him and what he really enjoys about the sales role.

Finally, If you employ people who work with machinery, heading into the Spring is a great time to take a look at the machines which they operate, and make sure that everyone has received the relevant training, both to make them safer, more efficient and also to comply with Health and Safety requirements. Find out about our Telehandler, Gator and Compact Tractor courses (page 24).

# EXCLUSIVE PRE-SEASON OFFERS!



Pottinger has been dedicated to agricultural technologies since 1871, now offering a full range of grassland and tillage equipment.

## TILLAGE OFFERS

**£10,500**  
SAVE £4,106  
RRP £14,606

### LION 303

### SPECIFICATION



Heavy Duty Driveline (180hp)  
1000/750/540RPM  
200mm toothed packer roll  
Quick Fix tines

### SPECIFICATION

### SYNKRO 3030

3 metre, Three row stubble cultivator  
Chisel point with wings,  
Left and Right hand side boards  
Pack ring roller 550-3000 coated



EX DEMO

**£11,250**  
SAVE £5,074  
RRP £16,324

## GRASSLAND OFFERS

**£12,500**  
SAVE £3,649  
RRP £16,149

### NOVACAT 442

### SPECIFICATION



Rear mounted 4.4m Plain Disc mower  
10 discs  
2 swath boards  
2 paddle drums  
1000 rpm  
Hydraulic break back protection

### SPECIFICATION

### HIT 8.81T

8 rotor tedder  
7.81m working width  
5 tines per rotor  
Mechanical fence line  
Durastar tines



**£10,995**  
SAVE £3,738  
RRP £14,733

Take advantage of these special pre-season offers, available whilst stocks last



## SIMPLE GRASS HARVEST PROCESS MAKES LOW-COST PRODUCTION EASY

**S**ituated just off the A40 near Haverfordwest, Richard and Dawn Lewis and three of their four daughters, Heather, Poppy and Josie, farm some 450 acres, milking 160 Friesians, rearing 100 head of beef and growing cereals for home consumption. It's not just your everyday farming enterprise, because it's also home to the highly popular Clerkenhill Farm Adventure Park and Frizbee Golf Centre. With two busy enterprises to run, the entire family are fully employed in every aspect of the operations.

Richard Lewis commented, "We run a very efficient system at Clerkenhill Farm, we don't employ anyone outside the family and so we adopted a low-cost milk production process that really works well for us."

Typically, the average yield from their Friesians is around 6500 litres, with a 4.2% butterfat and 3.2% protein. The herd is fully grass-fed, paddock grazing from early in the season, depending on the weather and ground conditions. Home-grown barley and cake is fed through the parlour and they use all their own straw to keep the costs down.

"Because we run a minimal labour input policy," added Richard, "we use a Pottinger Torro 5100 silage wagon, which means we can harvest the grass, pick-up and return it to the clamp, with just one person operating. The Pottinger is now in its fifth season and has proven to be very reliable and also efficient at chopping the grass, prior to ensiling. It's fitted with thirty nine (39) stationery knives, and that gives us an average chop length of around thirty seven mil (37mm), which is perfect for our operation."

Clerkenhill Farm bought their Pottinger Torro from their local dealer Tallis Amos Group (TAG), choosing the Pottinger over other brands because of the product reputation, quality of build and dealer back-up service.

"The beauty of our system," enthused Richard, "is that we don't have to depend on a contractor, we can go and harvest grass whenever it's ready, when it suits us and of course depending on the weather conditions. Typically, we take four cuts per year, averaging between two and three loads per hour at about two acres per load, so we can clear as much as sixty acres in a day. Silage quality is very respectable at DM 28.9, Protein 15.6, D Value 70.2, ME 10.9 and NDF 49.7. The maintenance of the Pottinger is very simple. I can sharpen a set of blades in half an hour and get going without delay. The support we have had from TAG has been excellent and we are very happy that this entire package means we can run an efficient farming business with minimal labour inputs and that has to make an awful lot of commercial sense."





**TAG**  
tallis amos group



JOHN DEERE

# NARBERTH OPEN DAY

WEDNESDAY 11TH MARCH  
12NOON TILL LATE

AFTERNOON REFRESHMENTS,  
EVENING HOG ROAST,  
PLUS SPECIAL ONE DAY  
ONLY OFFERS!

MEET THE SUPPLIERS!



POTTINGER



Teagle



SULKY



KRAMER  
*on the safe side*



1989 - 2019

SUPPLYING JOHN DEERE  
TO SOUTH & WEST WALES

0345 222 0456

WWW.TALLISAMOS.CO.UK

REDSTONE ROAD, NARBERTH, PEMBROKESHIRE, SA67 7ES



# SULKY PRE-SEASON OFFERS!

Sulky have been producing quality fertilizer spreaders for over 80 years.

Contact your local sales rep to find out about the full range from the dependable DX20 through to the range topping X50 Econov with spread widths of up to 50m.

We've got some great offers on 2019 priced stock, grab them now before they're gone

**SULKY**

## SPECIFICATION

### DX20+

- 1500L (2 bag)
- 18-24m spread width
- Hydraulic shut off (RH/LH)
- EcoBord Border Vane
- Hopper Cover
- Road Lights

**£4,995**  
SAVE £1,781  
RRP £6,776



### DX30+

## SPECIFICATION

- 2150L (3 bag)
- 12-28M spread width
- Tribord 2 system
- In cab electric controls
- Folding hopper covers
- Lights

**£6,499**  
SAVE £2,593  
RRP £9,092



## SPECIFICATION

### X40 ECONOV

- 3250L (4 bag)
- 24-36m spread width
- Weigh Cells
- ECONOV ISO-LINK Control Kit
- Folding Hopper Cover
- Mudguard extensions
- Road Lights

**£12,950**  
SAVE £5,941  
RRP £18,891



**Need to go bigger? Ask about hopper extensions**

# RIDE ON MOWER OFFERS

ALL PRICES  
INCLUDE VAT

EXPERIENCE THE DIFFERENCE



JOHN DEERE

## NEW JOHN DEERE X106 RIDE ON MOWER

RECOMMENDED MOWING AREA UP TO 4,000 M<sup>2</sup>  
107CM / 42" SIDE DISCHARGE CUTTING DECK  
PETROL BRIGGS & STRATTON ENGINE

**£2,215**  
SAVE £230!

RRP £2,445



**£3,512**  
SAVE £50!

RRP £4,013



## NEW JOHN DEERE X146R RIDE ON MOWER

RECOMMENDED MOWING AREA UP TO 4,000 M<sup>2</sup>  
92CM / 36" REAR DISCHARGE CUTTING DECK  
300LTR GRASS COLLECTION BAG  
PETROL BRIGGS & STRATTON ENGINE

## NEW JOHN DEERE X350R RIDE ON MOWER

RECOMMENDED MOWING AREA UP TO 8,000 M<sup>2</sup>  
107CM / 42" REAR DISCHARGE CUTTING DECK  
MULCH PLUG  
300LTR GRASS COLLECTION BAG  
PETROL KAWASAKI ENGINE

**£4,934**  
SAVE 728!

RRP £5,662



**£7,650**  
SAVE £1,093!

RRP £8,743



## NEW JOHN DEERE X590 RIDE ON MOWER

RECOMMENDED MOWING AREA OVER 8,000 M<sup>2</sup>  
137CM / 54" SIDE DISCHARGE CUTTING DECK  
PETROL KAWASAKI ENGINE





## DRILL PROVES ACCURACY FOR THE LONG-TERM

**O**ver the past 35 years, Raglan, Monmouthshire-based agricultural contractor, Stan Evans Contracting Ltd., have developed a strong following of farmer customers because of their approach to quality and doing the job right! Their full-service offering includes all grass and stubble-to-stubble services, which runs alongside their own 450 acres of arable cropping.

Whilst self-propelled foraging and combine harvesting are major parts of the operation, it all begins by sowing the seeds properly in the first-place and establishing a highly productive crop. Business-owner, Stan Evans commented, “Many of our customers have fields of between eight to twelve acres (8-12 acres) and our long-term experience is that our seed drills, the Sulky XEOS Pro not only gives us the best advantage in creating the perfect germination, but it also provides excellent accuracy and avoids over or under-seeding. We’ve now got three of these three-metre drills, have had this model for over ten years and so we know from personal experience it’s better than anything else out there. We just added another one to our fleet this last year because it has proven to be reliable, accurate and a very low-cost machine to operate. Our local Sulky dealer, TAG (Tallis Amos Group) takes care of the after-sales service, stocking any parts we might need.”

Their set-up is a John Deere 6155R, with front-mounted combination which is a DALBO 3m press with levelling tines and the fully mounted 3m Sulky power-harrow and drill unit on the rear. Without having to significantly change any specifications, the Sulky XEOS Pro handles all kinds of seeds from stubble turnips, linseed, grass, oil-seed rape, wheat, barley, oats, beans - the list is endless.

Rob Cook is Foreman and main drill operator and is really impressed with the stand-alone, on-board control unit

which enables accurate seed placement and avoids over or under-seeding. “We can drill into prepared ground or even into a min-til environment with the Sulky,” commented Rob, “we can simply adjust the ground pressure to up to one hundred kilograms (100kg) when working dry land, or reduce the ground pressure in soft or moist conditions. It’s got a serrated single-disc system that turns the slot for perfect seed placement - it doesn’t smear like double-disc systems. With the on-board Pilot Console we get electronic metering and can measure drill operating speed. We record every field we drill and that information can be shared with our farmer customers. It shows exact field size, exact application rate and can be used as an effective crop husbandry tool. Currently I have over eight hundred fields in our management recording back-up - it’s all part of the service.”

“We often drill as much as two-thousand acres every year with the main drill and that’s a lot of small and odd-shaped field work. But the accuracy and placement of the Sulky is absolutely spot on” added Stan. “At the start, we key in the field name and the application rate and when we finish the field, there is nothing left in the hopper. At the busy periods we will have all three of these drills operating to get the job done. In the ten years we’ve been operating this drill, we have never replaced a disc or a bearing - which shows me that this is real quality of design and manufacture.”



Stan Evans (left) and Rob Cook “In the ten years we’ve been operating this drill, we have never replaced a disc or a bearing



## BLADES

John Deere WAM 15-1600 Series  
TCU51118  
**£18.50**



John Deere 22" Stationary Knife  
ET17533  
**£48.00**



John Deere 17" Mower Blade  
M145476  
**£11.00**



John Deere 19" Mower Blade  
M143520  
**£18.00**



## BELTS

John Deere 42" Mower Drive Belt  
M152630  
**£50.00**



John Deere Powerflow Drive Belt  
M162443  
**£54.00**



John Deere 42" Timing Deck Belt  
M150718  
**£69.00**



All prices subject to VAT  
Offer expires 28/02/20

## LATEST OFFERS ON HARVEST PARTS

### MOCO KNIVES

Claas (9041778/7)  
**85p**



Kuhn (56150000)  
**80p**



John Deere (FH304879)  
**83p**



### BALER / WAGON KNIVES

McHale Wagon Knife (CKN00014)  
**£16.00**



Pottinger Wagon Knife (434.126.001)  
**£23.00**



John Deere Baler Knife (CC45488)  
**£27.00**



### FORAGER BLADES

John Deere Narrow body grass (Z69500)  
**£16.50**



Krone BigX (3507730)  
**£80.00**



New Holland (80049945Z)  
**£17.00**



**GENUINE & COMPATIBLE  
AVAILABLE!**

### PICK UP TINES

John Deere (CC25176)  
**£2.25**



Pottinger (436.151)  
**£2.38**



Welger (940522900)  
**£1.70**



All prices are per item & subject to VAT. Offer expires 28/02/20

# ACT NOW ON OUR LIMITED PRE-SEASON BALER OFFERS

## SPECIFICATION

## JOHN DEERE F441R

Premium Heavy-Duty Fixed Chamber Baler  
2.20m pick up  
Auto grease cartridge  
Hydraulic brakes  
13 knife MaxiCut chopper  
1000rpm  
Ramp discharge

**£28,950**  
**SAVE £23,816**  
RRP £52,766



**MASSIVE SAVINGS!**  
**ONLY 1 AT THIS PRICE!**

## JOHN DEERE V451M

## SPECIFICATION



**£28,500**  
**SAVE £16,764**  
RRP £45,264

Variable chamber  
2.2m premium pickup  
Rotoflow hc  
Windrow compressor roll  
Net wrap - coveredge compatible  
Fixed gauge wheels  
Baletrak plus

**ASK YOUR LOCAL SALES REP ABOUT OUR FLEXIBLE FINANCE OFFERS.**

**0% FINANCE AVAILABLE!**  
ON ORDERS PLACED BY APRIL 2020

**ON SELECTED AW TRAILERS  
& STOCK BOXES!**  
WITH A RRP ABOVE £25,000



**AW TRAILERS**

**ASK YOUR LOCAL SALES REPRESENTATIVE FOR MORE INFO**

0% Finance (2+22 monthlies) available on 50% of retail. Available in the UK for business purposes only, subject to acceptance, conditions apply

# 7R SERIES. MOVE MORE

The new 7R series tractors from John Deere, it's low overall machine weight and high horsepower rating give the 7R Series its exceptional power density. This agile tractor not only transports your loads, it will move your business ahead, available in 5 models ranging from 250 – 330 rated horsepower.

Get your first view of the new John Deere 7R and 8R including the brand new 8RX four track machine at the John Deere Large Tractor roadshow, which will be visiting our Evesham depot on Monday 23rd March 2020 from 2pm to 8pm. Refreshments available all day, food from 4pm onwards.



## The ergonomic driver Interface: CommandPRO

Mastering the power of the 7R Series tractors is simple with the new CommandPRO joystick and its 11 reconfigurable buttons. It's the ultimate driver interface for making every working day more comfortable and productive.



## Active Seat II

The new Active Seat II uses quick-reaction electric suspension technology to isolate you from up to 90% of vertical movements. Enjoy superior ride-quality in the roughest of conditions.



## New Precision AG Solutions

Our new StarFire 6000 Integrated Receiver builds up full signal accuracy quicker than ever, comes factory calibrated and is equipped with theft-prevention features. Precision AG solutions start with the StarFire 6000.



## TouchScreen Radio

The 6.5" state-of-the-art digital Touchscreen Radio with Apple CarPlay gives you a multitude of entertainment options, conveniently accessible with a touch display that lets you switch between applications.



## New 8RX Series

If minimum soil disturbance is a priority for you, there is no way around the 8RX. It's ideal for difficult hill-side terrain and soil types. Plus you'll benefit from maximum operating windows.

Available in four model variants ranging from 310hp – 410hp





## Come to the pit stop

Make sure you are serviced in good time to get a head start next season



10% Parts & Labour discount on ALL Pottinger machines booked in for Annual Servicing

**FREE PÖTTINGER WATCH** for the first 5 machines booked in!

**Valid from 01 February 2020 – 31 March 2020**

**Call your local TAG Service Department on 0345 222 0456 to book in!**

 **PÖTTINGER**

Offer only valid on Pottinger machines, Only 1 watch per person, No cash/discount alternative



## SPREADER MEANS BIG CUTS IN FERTILISER COSTS

**R**omsley, Bridgnorth based farming enterprise of RGC & JM Norgrove can trace their history back for over 100 years. Initially offering very reputable contract threshing and general farm services, but 100 years on, the business now farms some 450 acres of arable and grassland. A full-service contractor providing all-arable services such as cultivation, drilling, fertiliser and spraying, combining, baling, hedging and a whole host of other support.

Typical arable cropping includes winter barley, winter wheat, winter oats, oil seed rape, spring barley and around 40 acres of fodder beet, which they grow as part of a rotation plan – selling on the produce. They also have around 100 acres of permanent grassland producing and selling the hay to the open market.

Gerald Norgrove and his Son-in-Law, Adrian Rickhuss run the family-farm and they invest in high quality machinery to ensure great field performance and reliability. They also value cost-effectiveness, to ensure they get the best return on investment. “One of the best machinery purchase decisions we made,” commented Adrian Rickhuss, “was the Sulky X40 fertiliser spreader. We’ve had three Sulky’s in a row and last year we purchased our second X40 Econov and it’s proven to be not only highly accurate, but also a big money saver.”

The Sulky X40 is a 4200-litre capacity twin-disc spreader which provides left and right modulation on a curved application pattern and incorporates a stand-alone ISOBUS control system. This automates the fertiliser spread pattern and minimises overlap, using an integrated section control. The result is a major reduction in ‘over-and-under’ application of fertiliser and optimisation of crop yield performance.

“We run six John Deere tractors, all supported by our local dealer, Tallis Amos Group. They are also our local Sulky dealer and together with their integrated solutions team and Sulky’s Richard German, I’ve had some great back-up in helping me to install and set-up the machine to get the most efficient field performance.” said Adrian. “We travel from farm to farm and have an integrated Rekord bag lifter so we can handle fertiliser straight from the customer’s storage pile - it really works to our advantage.”

But what are the savings worth using the Sulky X40 Econov?

“We work with many awkward shapes of fields,” said Adrian, “and this is where the Sulky really comes into its own. The on-board section control and overlap management system, automatically takes over and reduces any over-spread and this means we are saving around ten-per cent of our fertiliser bill. For our farm alone, that equates to not having to buy fertiliser for our fodder beet and grassland crops, so it’s money in the pocket for both ourselves and our customers.”



**15%  
DISCOUNT!**



**OFFER EXPIRES 31/03/20**

## Fertiliser Spreader Testing

Inspection of the spreader including condition of discs and vanes.

Tray testing to confirm evenness of spread across the working width of the machine.

Adjustments made if required to achieve the best Coefficient of variation (CV) for each product.

up to 24 Meter **now £190**

36 Meter + **now £250**

Test is with one product, Additional products tested at £50 each

**SULKY**   
FARMING TOGETHER

More Info: [sulky-burel.com](http://sulky-burel.com) Tel: 0345 222 0456

FERTILISER SPREADERS

SEED DRILLS

POWER HARROWS

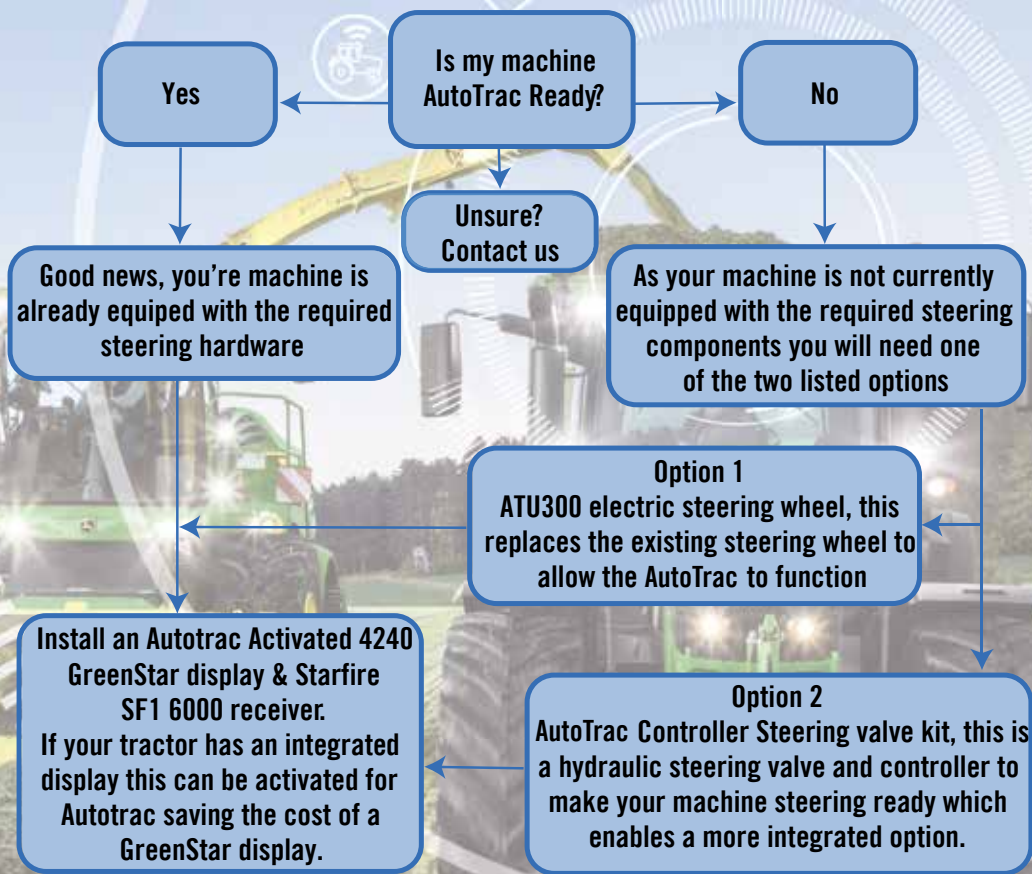


 **PRECISION REDEFINED**



# GETTING STARTED WITH PRECISION AG & TURF

I have my machine what next? How do I make this happen?



Meet our  
Precision  
Ag &  
Turf Team



Trevor Bolton



Chris Bufton



Martin Phillips

Visit [tallisamos.co.uk/agricultural/precision](http://tallisamos.co.uk/agricultural/precision) for more information on transforming your field operations and working efficiency

# A DAY WITH...

Rich Morgan – Agricultural Area Sales Manager  
Bibury Branch

**W**hen I was at school, selling wasn't on my original list of career choices, after a decade working for an agricultural contractor, I was looking for a change. I saw an advert for a sales position and thought that it was something that would make use of my agricultural machinery knowledge. I've now been an agricultural salesman for 9 years, joining TAG in April 2019.

Over these past 9 years I have really enjoyed building a trusting relationship with my customers. It can be a very rewarding role and I get a lot of job satisfaction when I help a customer choose a machine with the knowledge that it will perform well for them and make their life easier and more productive.

The sales role involves so much there isn't really a typical day, customer visits, demonstrations, supplier training in the UK and Europe and setting up and support shows all makes for a varied life.

Most days I leave home at 6.40 and travel from Dursley to Bibury, once in the office I check my emails and follow up on any outstanding queries. I always try to complete my paperwork by 11, leaving the rest of the day free for customer visits.

The first scheduled meeting of the today is with a customer who has a John Deere 855M Gator, after several years of faithful service they are looking to upgrade. I go through the differences between the older 855M and the new 865M, arrange a follow up meeting and leave the customer to mull over the options.

The second meeting is a parts drop off with a customer who has been dealing with TAG for many years, but they're new to me. Dropping off a service kit is the ideal opportunity to introduce myself.

On my way to my third visit I stop to check emails and pickup voice mail messages (The lady conveniently had a burger van!) I update my notes on the first two visits and take the opportunity to refresh my memory on the proposal for my next visit.

The third visit of the day is to discuss a proposal for a new John Deere 6215R, we've already had two previous meetings to decide on the specification and to customise



the tractor for the customer's requirements in this final meeting I am hoping to close the deal. I come away happy after shaking the customer's hand. It gives me a great buzz to win a deal like this, particularly on a tractor like a 6215R which I know will be a fantastic machine with some great features such as AutoTrac guidance which will really help the customer.

On the way to my next call I call into to see a customer who is considering changing his mowers, although they weren't going to be in, they'd told me where their old mowers were. I was able to get details and send some photos over to our Used Equipment manager for a valuation.

My fifth visit was a follow-up call to a customer who's older tractor was starting to give some problems, and he is looking to change it for a second hand John Deere and wanted to know if we have any tractors which would suit his requirements. We go through a couple of options and agree a sale on a tidy 5075E.

By the time I finish my last call, it's dark, I have one meeting left before heading home to a cold beer! A follow-up following the delivery of a new KT357 Kramer handler. I want to make sure the customer is satisfied with their new machine and that are no outstanding questions. The customer is very happy with the machine and I pass one query on the machine's seat onto Darren in our workshop. Happily, he was able to sort this out quickly. It's great to know that I have the backup of the workshop and parts department to help whenever needed.

With a busy day now done, I travel home, and do a quick check of messages, the paperwork can wait until the morning - Now for that beer!

CUTS TIME, MAINTENANCE, COST AND GRASS!

INTRODUCING

# SNAKE//SERIES 2

**FEATURING:**

- ✓ LocTEK™ Stubless Rollers
- ✓ SteadFAST™ Sealed Spindles
- ✓ Auto Belt Tensioners



WITH ANNUAL MACHINE MAINTENANCE AS LOW AS £245!\*



READY TO BE AMAZED? **BOOK A FREE DEMO TODAY!**  
CALL US ON +44 (0)1933 652 235

f t i v // [TRIMAXMOWERS.CO.UK](http://TRIMAXMOWERS.CO.UK)

\*Average per annum



**CALL YOUR LOCAL  
SALES REP TO  
BOOK A DEMO!**



Worcester  
Phil Taylor  
07800 773151

Cheltenham  
Richard Ainslie  
07970 203538

Hereford  
Marcus Williams  
07817 570451

Gloucester &  
Swindon  
Alex Jones  
07766 540924

Bristol & Bath  
Nick Wilson  
07766 540943

WWW.TALLISAMOS.CO.UK





# COMMERCIAL MOWER TIPS

With the cutting season just around the corner, we've compiled some useful tips to help you safely get the most out of your commercial mower.

As always, our workshop are on hand to offer a machine check overs to ensure that your machine is serviced and ready to go for the season ahead. Contact your local service manager for more details.

## Pre-Start checks

Your operator's manual will contain details on the safe operation of your machine, along with details of regular maintenance checks.

Before you start your machine you should check the following with the engine cool & on a level surface;

- Engine & Transmission oil levels
- Engine coolant level
- Air filter condition

## Machine Starting Tips

- Park Brake engaged
- Hydrostat pedals in neutral position
- PTO Switch in "OFF" position (pushed down)
- Turn key to run position - Engine air pre heater LED on instrument cluster will illuminate for 3-15 seconds and then go out
- Run engine half throttle 2-3 mins for warm-up. Avoid unnecessary idling

## Key Setup and Adjustments — Mower deck

All checks should be done with the engine off and key removed

- Machine should be parked on paved level surface
- Tyre pressures should be set correctly
- Deck should be lowered
- Height of cut measured from blade tip to surface of pavement using special tool

## Side Discharge Decks

- Height of cut adjustment is set on the decks at 4 points noted (B)
- "Rotate-for-Service" decks rotate up vertically for blade servicing
- Rear discharge are similar but use spacers on front caster wheels



## Consequences of Improper Set-Up and/or Operation – Machine/Deck

- Poor cut quality/deck leaves uneven and/or uncut grass
  - Blades are dull
  - Height of cut set too low for turf height and conditions
  - Mow speed too fast for turf conditions
  - Deck not level, spindle pocket bent from impacts, or mower blades bent
- Turf scuffing
  - Mow speed too fast in turns or on slopes; tyres skidding or slipping
- Loss of traction while mowing or traveling across slope
  - Tyres not inflated to correct pressure
  - Ground/mow speed too fast for turf conditions
  - Slope angle too steep for turf conditions



# New John Deere 2750 Triplex Mower

- 19 hp Diesel engine with electronic throttle control
- Electric Reel Drive
- Same cut quality, regardless of operator
- TechControl advanced supervisory controls
- Frequency of Clip mode
- Premium Contour Following



**CALL YOUR LOCAL SALES  
REPRESENTATIVE FOR  
MORE INFORMATION**



**JOHN DEERE**

NOTHING RUNS LIKE A DEERE

# EX-HIRE



**John Deere 7310R**  
2017 **£136,250**

1100 HOURS, 50K AUTOPOWER, AUTOTRAC, TLS, 5 ESCV, 3 SPD PTO

AP/PXM



**John Deere 7290R**  
2018 **£125,000**

1050 HOURS, 50K AUTOPOWER, AUTOTRAC, TLS, 5 ESCV, A/C, PUH

AP/DV18



**John Deere 7290R**  
2017 **£118,750**

1600 HOURS, 50K AUTOPOWER, AUTOTRAC, ACTIVE SEAT, TLS 5 ESCV, PUH

AP/CNF



**John Deere 6215R**  
2018 **£115,500**

1175 HOURS, 50K AUTOPOWER, CAB & AXLE SUSPENSION, 4 ESCV, AUTOTRAC READY, FRONT LINKAGE

AP/EUY



**John Deere 6155R**  
2017 **£88,750**

1485 HOURS, 50K AUTOPOWER, PREMIUM EDITION, TLS & CAB SUSPENSION, 4 ESCV, AUTOTRAC READY, F/LINKAGE & PTO, POWER BEYOND

AP/WCJ



**John Deere 6155R**  
2018 **£77,500**

2950 HOURS, 50K AUTOPOWER, 4 ESCV, TLS AND CAB SUSPENSION, F/LINKAGE, AUTOTRAC READY, POWER BEYOND

AP/EUP



**John Deere 6130R**  
2017 **£66,000**

1900 Hours, C/w 643R LOADER, 40K TLS, 3 SCV, AUTOTRAC READY, FRONT FENDERS, ITEC, POWER BEYOND, PUH, NEW TYRES

AP/ZPG



**John Deere 6120M**  
2017 **£48,250**

925 HOURS, 40K 24/24 AUTOQUAD, CAB AND AXLE SUSPENSION, 3 SCV, A/C, ADDITIONAL RESERVOIR

AP/VCO

Call 01386 576 666 for more information. All prices Ex-VAT



# USED MACHINERY

**FEATURED  
PRODUCT**



21025203

## John Deere C670 HillMaster

2011 **£100,000**

1301 HOURS 30K 3 SPEED TRANS, 6.1M UNLOADING AUGER, AUTOTRAC READY, C/W 625R HEADER ON TROLLEY



11019260

## John Deere C670 2011 **£95,000**

1346 HOURS, 30K, DUAL RANGE CYLINDER DRIVE, HARVEST MONITORING, HD FEEDER HOUSE CHAIN, C/W 625R 25FT TROLLEY



21019575

## John Deere T560 LL 2011 **£94,000**

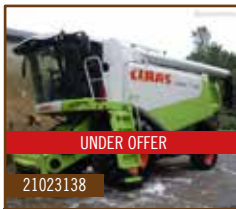
940 HOURS, LATERAL TILT, AUTOTRAC READY, CHAFF SPREADER, WINDROW DEFLECTOR RAKE, TRAILER HITCH, C/W 622R HEADER & TROLLEY



31025106

## John Deere T550 2015 **£125,000**

591 HOURS, LEVEL LAND COMBINE CHOPPER SER/EL ADJ DEFLECT HYD CHAFF SPREADER W/O AUTOTRAC + GS HARV MON GS3 2630 DISPLAY MOUNTED – STOCK PHOTO-



21023138

## Claas 570C 2007 **£67,750**

2694 HOURS, CHOP/CHAFF, C/W V750 AUTO CONTOUR HEADER ON TROLLEY

**UNDER OFFER**



AP/NARBERTH

## John Deere 2054 LL 1994 **£22,000**

1230 HOURS, M REG, C/W 16FT HEADER AND TROLLEY



31025075

## John Deere T550 2015 **£125,000**

350 HOURS, LEVEL LAND COMBINE CHOPPER SER/EL ADJ DEFLECT HYD CHAFF SPREADER AUTOTRAC GS HARV MON GS3 2630 DISPLAY MOUNTED C/W 620R HEADER & TRAILER – STOCK PHOTO-

Call 01386 576 666 for more information. All prices Ex-VAT

# USED MACHINERY

**FEATURED  
PRODUCT**



51023084

## John Deere 8600

2016 **£180,000**

1557 HOURS, 40K PRODRIVE, CRANE, AUTO COUPLER, DUAL DRIVE HEADER, SPOUT + REVERSING CAMERA, TWINLINE ADDITIVE TANKS & SYSTEM



DJ/NARBERTH

## John Deere 7980

2014 **£95,000**

2450 HOURS, 40K PRO-DRIVE, KERNAL STAR KP



51018119

## John Deere 7400

2003 **£40,000**

4449 HOURS, 3 SPEED HYDRO, IVLOC HEADER DRIVE, 40 KNIFE DRUM, AUTO SHEARBAR ADJUST, C/W 630A HEADER



21022294

## John Deere V451M

2019 **£45,264**

2.2M PREMIUM PICKUP  
ROTOFLOW HC WINDROW  
COMPRESSOR ROLL NET WRAP



31022669

## John Deere F440

2015 **£17,000**

13 KNIFE MAXICUT BALER,  
2M PICK UP, ADDITIONAL NET  
STORAGE, AUTO GREASER



21025182

## Hesston 4900

**£9,000**

70000 Bales, DOUBLE KNOT  
TYING, 6 STRING, 1200X1280  
BALE



21024937

## John Deere 744

2010 **£16,500**

32000 BALES, 2.2M MAXICUT PICKUP,  
DROP FLOOR, CASTER ACTION GUAGE  
WHEELS, AUTOLUBE, 1000 RPM 6  
SPLINE SHAFT, VT1 MONITOR - STOCK  
PHOTO-

Call 01386 576 666 for more information. All prices Ex-VAT

**FEATURED  
PRODUCT**



11022794

## John Deere 7260R

2012 **£65,000**

3164 HOURS, 40K AUTOPOWER, 4 ESCV,  
TLS, HYD TRAILER BRAKES



31024279

### John Deere 6210R

2013 **£49,000**

57859 HOURS, 50K AUTOQUAD  
TLS, HCS AUTOTRAC READY,  
FL & PTO



51023135

### John Deere 6155R

2016 **£48,000**

9321 HOURS, AUTOQUAD 40K,  
TLS & CAB, 4 HYD SPOOLS,  
FRONT LINKS & PTO

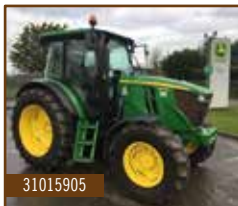


51024561

### John Deere 5125R

2018 **£46,000**

1000 HOURS, 16/16R COMMAND  
QUAD 40K, 3 SPEED PTO, 3 SCV,  
LOADER READY

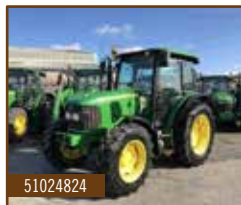


31015905

### John Deere 6110M

2016 **£39,000**

732 HOURS, 40K 24/24 P/QUAD  
PLUS, PUH, A/C, AIR SEAT, 3 SCV



51024824

### John Deere 5090M

2013 **£31,000**

911 HOURS, 12X12 POWER  
REVERSER, 2 SPOOLS, A/C



31023346

### Claas AXION 820

2012 **£29,950**

5715 HOURS, 50K POWERSHIFT,  
650/540 TYRES, TLS

Call 01386 576 666 for more information. All prices Ex-VAT



**BOOKING NOW  
OPEN FOR MARCH,  
APRIL, MAY!**

# OPERATOR TRAINING COURSES

Ensuring your operators are trained in the safe use of the equipment that they work with is an important Health & Safety requirement, we can help with our range of operator training courses

## OUR BEST SELLING COURSES

**BASIC TRACTOR DRIVING  
ATV & UTILITY VEHICLES  
COMPACT TRACTORS  
LOADING SHOVEL TRACKED & WHEELED  
ROUGH TERRAIN TELESCOPIC HANDLER UP TO 9M**

**FROM £140 / PERSON**



VISIT [TALLISAMOS.CO.UK/TRAINING-TESTING](http://TALLISAMOS.CO.UK/TRAINING-TESTING) FOR MORE DETAILS ON OUR RANGE OF COURSES



**CALL PETE GASH ON 0345 222 0456 OPT 2.  
FOR BOOKING AND COURSE AVAILIBLTY**



Price shown is based on a shared 1 day refresher course, is subject to VAT & certification costs

## CALL YOUR NEAREST BRANCH FOR MORE DETAILS

**EVESHAM**  
Hinton on the Green  
Evesham  
Worcestershire  
WR11 2QT

**BIBURY**  
Meadowlands  
Bibury, Cirencester  
Gloucestershire  
GL7 5LZ

**LEOMINSTER**  
Southern Avenue  
Leominster  
Herefordshire  
HR6 0QB

**NARBERTH**  
Redstone Road  
Narberth  
Pembrokeshire  
SA67 7ES

**0345 222 0456**

**WWW.TALLISAMOS.CO.UK**