

QUALITY MEANS SUCCESS FOR GOLF COURSE RESTORATION

AUTUMN 2020

IN THIS ISSUE:

LIFT OFF FOR KEMBLE
PAGE 5

FUEL GUARANTEE SCHEME
DELIVERS BIG SAVINGS
PAGE 15

SAFETY FIRST
TRAILER TESTING
PAGE 17



WELCOME

As the clocks go back and we get used to the darker evenings, welcome to our latest edition of TAG Torque, jam packed with money saving offers to warm you up as the temperatures drop. We've got a selection of stories showcasing how our customers from the golf course to the farmyard are getting the best out of equipment supplied and serviced by Tallis Amos Group.

See how Drayton Park are achieving great results using John Deere equipment to support them on their seven-year plan to return the 18-hole course to its original James Braid parkland design page 3.

Sticking with grass care we've got some fantastic end of season offers on a range of zero turn mowers; manoeuvrable, quick and compact these are great for covering wide areas with obstacles to navigate around, and they even make mowing the lawn fun! Turn to page 6 for details.

On page 17 we have details of our Tilly trailer testing service. Don't just think you're safe, know you're safe with a comprehensive trailer test. Book in now and your trailer will be good to go when you need it next year.

Looking ahead to the winter, read how Ludchurch Farms are using their Teagle C12 bale processor to prepare 11 tonnes of straw to just 25mm as part of a TMR mix on page 9. We also have a limited number of Teagle Tomahawk straw choppers in stock at discount prices, details on page 8.

Would you be lost without your Gator? Get it ready for winter with a £250 service offer on page 10. And if you're remembering the warmer days of harvest, then find out how Mark Bennion has been harnessing the power of two John Deere combines to deliver flexibility and output in the field. Looking ahead to 2021, there is still time to book your combine or forage harvester in for an Expert Check page 18.

In uncertain times, we're all focusing on controlling costs, a major source of expense for any machinery is the cost of fuel. Reducing operating costs is something we have been working with customers on, through advising on setup and operation of machinery. On page 15, see how Pembrokeshire Agricultural Contractor Sean Savage, benefited from the fuel efficiency of his John Deere Tractors and was rewarded for it as part of John Deere's fuel guarantee scheme.

The Mighty 6M has been showing it's strengths as it has been put to work in many jobs across the TAG area, see how Will Lloyd has put his new 6120M to work on the Welsh borders, page 13.

Finally, work is progressing well on our new build depot next to Kemble Business Park, keep up to date and see the latest photos of the build on page 5.



QUALITY MEANS SUCCESS, THROUGH AND THROUGH

A seven-year plan to return the 18-hole course to its original James Braid Parkland Course design is well underway at Drayton Park. The seven-strong maintenance team have had their work cut-out but are achieving great results.

Led by Course Manager, Dale Housden, the team's challenge looks like it is already some eighteen months ahead of their completion schedule - mainly because of the excellent weather conditions this year. With a solid membership of some 500 and a very healthy visitor pool, Drayton Park Golf Club is receiving rave reviews over the quality of its greens.

Course Manager, Dale Housden commented, "I came here two years ago from Hollywood Golf Club, with the sole objective of reinventing the identity of Drayton Park to a high-class parkland course. We are making considerable headway. One of the main reasons for that progress is the investment we have made in quality equipment. We are using the Trimax Snake, the TruTurf 5011 Roller and almost the entire range of John Deere professional golf machinery. That includes the John Deere 7700A Fairway mower, the John Deere 2653 Surrounds Mower, three John Deere 2500Es and two John Deere 3038 Compacts. The perception is that these are expensive pieces of kit, but that's not the case because they are very competitively priced and, in my experience, are giving us an excellent return on our investment."

Coming from Hollywood, which is about twenty miles from Drayton and in another county, Dale had always used his local John Deere dealer Tallis Amos Group (TAG) based in Evesham for supplies of Trimax, TruTurf and John Deere machinery.

"Although there are other John Deere dealers in the area," added Dale, "I decided to stay with TAG because their after-

sales service and support is second-to-none. In fact, it's exceptional. We cover all of our machines with John Deere's PowerGard and TAG take care of all the maintenance and any repairs - which are few and far between. I have a great relationship with the TAG people, and their Turf & Commercial Service Manager, John Simpson and his team pull out all the stops to look after us.

Our greens are all managed to USGA standards, just the same as the internationally renowned championship courses around the world where many of them use John Deere machinery. We really like the tech control system which is common on all the John Deere golf machines and it makes it easy for our operators because the controls are all similar between the mowers. At Drayton Park Golf Course, we are making a statement to our members and visitors, that we mean business in providing the ultimate course conditions and we can only do that with quality equipment, top-class Green-keepers and industry-leading back-up support from TAG. The feedback from our members and visitors is that the greens are in excellent shape, some claim they are some of the best in the area. So, this for me is a complete package that works. It allows us to get the best out of our machines which keeps me happy!"



CURRENTLY SERVICE YOUR OWN TRACTOR ?



EXPERT CHECK: DON'T MISS OUT

Have one of our factory trained experts, someone who knows your machine inside out give it a full health check. Book your tractor in for an Expert Check to ensure maximum uptime all year round.

6M & 6R INSPECT ONLY PACKAGE

Consists of an Expert Check which includes 160 checkpoints including the engine through to the power-train, cab and electrical systems

£220

6M & 6R INSPECT & CONNECT PACKAGE

Consists of a 2 year JDLink Subscription which enables wireless data transfer and connected support plus, the above Inspect Package

£839

Excludes vat. Offer expires 28.02.2021



TAKE OFF FOR KEMBLE

Groundworks are now well under on the Kemble Business Park development, our latest investment in UK agriculture. When complete the purpose-built depot will allow us to deliver best in class sales, service, and parts backup from our state-of-the-art facilities.

As the heavy excavators rolled onto the site, marking the start of a new era for us at Kemble. Just over the hedge at the neighbouring airfield, the end of another era was being marked. Crowds gathered to watch the touchdown of the final plane in the British Airways 747 fleet.

The so-called 'Queen of the Skies' was introduced in 1969 and has flown 3.5 billion passengers over 50 years. On her final flight, we managed to catch this picture as it passed over the building site.

In 1969, when Boeing was launching their 747, John Deere rolled out their first-ever turbocharged tractor, the 4520. Updates to the popular 3020, 4020 and 5020 tractors saw the top of the range push horsepower to an industry-leading 141hp! Today the top of the range is the amazing 9620R with 620hp.

Away from the site, work has commenced on the steel building frame which will be delivered ready for Perrott Building Services to assemble. "After so much time in the planning it's great to see activity ramp up on-site," said TAG Sales Director Simon Amos. "The whole team are looking forward to moving in!"

Follow us for updates as the build progresses on our social media.



END OF SEASON OFFERS



JOHN DEERE

SPECIFICATION

Z335E

Recommended Mowing Area up to 8000m²

12.2 kW V-twin Engine

42" Accel Cutting Deck

Faster Mowing Speeds: 10.8kph

Highly Manoeuvrable

RRP £4,179

£3,250

SAVE £929



Z525E

SPECIFICATION

Recommended Mowing Area Over 8000m²

13.4 kW V-twin Engine

48" Accel Cutting Deck

Faster Mowing Speeds: 13.7kph

Highly Manoeuvrable

RRP £5,827

£4,600

SAVE £1,227



SPECIFICATION

Z540R

Recommended Mowing Area Over 8000m²

16.1 kW V-twin Engine

48" High Capacity Accel Cutting Deck

Faster Mowing Speeds: 14.5kph

High back comfort seat

RRP £7,256

£5,750

SAVE £1,506



**FREE
LEAF BLOWER!**

Free Stihl BGA 45 Cordless Leaf Blower with purchase of New John Deere Z335E, Z525E or Z540R.



Offer valid while stocks last. Not valid in conjunction with any other offer. Prices include vat

PROTECTIVE CLOTHING



EACH JOB COMES WITH DIFFERENT REQUIREMENTS, AND GOOD PROTECTIVE EQUIPMENT MUST PROVIDE RELIABLE PROTECTION, NO MATTER THE CONDITIONS



Chainsaw Protective Kit

Protective Kit contains all the PPE safety kit that you will need to begin your chainsaw work. **Helmet** EN397, **Gloves** EN381-7, **Trousers** EN381-5, EN340. 581966001

£99.95



Forestry Helmet Set

Equipped for forestry or garden work. With a traditional six-point adjustable slip ratchet. Approved to EN397 & Low temperature work -30°C. 580754301

£32.95



Ear Defenders

Light and comfortable with extra wide headband for secure fit and less pressure on the users head. 505699012

£12.95

PRICES INCLUDE VAT WHERE APPLICABLE

BEST SELLERS



Husqvarna 120i



- 12" Cutting Bar
- Includes battery and charger
- Cordless 36v Lithium Ion Battery

TAG PRICE £210 RRP: £250

Husqvarna 120 Mark II



- 14" Cutting Bar
- 1.4 kW Petrol Engine
- X-Torq® engine technology

TAG PRICE £120 RRP: £141

Husqvarna 455 Rancher



- 18" Cutting Bar
- 2.6 kW Petrol Engine
- X-Torq® engine technology

TAG PRICE £425 RRP: £500

Stihl MSA120



- 12" Cutting Bar
- Includes Charger and Battery
- Cordless 36v Lithium Ion Battery

TAG PRICE £190 RRP: £208

Stihl MS180



- 14" Cutting Bar
- 1.4 kW Petrol Engine
- Anti Vibration System

TAG PRICE £165 RRP: £213

Stihl MS271



- 18" Cutting Bar
- 2.6 kW Petrol Engine
- Anti Vibration System

TAG PRICE £475 RRP: £570

All prices are subject to vat. Offers expire 21/12/2020

EXCLUSIVE TEAGLE OFFERS!

Teagle

Teagle has been dedicated to agricultural equipment since 1943, now offering a full range of products serving livestock and arable farmers.

8555 DUAL CHOP TOMAHAWK

SPECIFICATION

Spread long or short straw or process short for TMR feed, poultry and cubical bedding
Process / deliver hay and silage for feed

Spreads Straw up to 20 meters

Removable 50mm screen

Bluetooth electric controls

RRP £28,480

£16,995

SAVE £11,485



SPECIFICATION

8100SC TOMAHAWK

With Swivel Chute

Feeds baled and clamp silage

Spreads Straw up to 20 meters

Bluetooth electric controls

RRP £22,345

£11,950

SAVE £10,395



TOPPER 8

SPECIFICATION

8ft Cutting Width

Sliding headstock for Semi-offset

Belt drive

Twin rotor with flail blades

RRP £3,885

£2,250

SAVE £1,635



SPECIFICATION

TOPPER 510

5ft 10" Cutting Width

Flexible Top Link

Swinging spring steel blades

Single Rotor

Overrun Clutch

RRP £2,350

£1,400

SAVE £950



Take advantage of these special offers, available whilst stocks last. Prices exclude vat



HIGH PERFORMANCE BALE PROCESSOR IMPROVES HERD EFFICIENCY

Just outside Narberth, Pembrokeshire, the family farming enterprise of Ludchurch Farms, owned by Phil and Louisa Davies, run a highly efficient dairy operation. They milk 1350 head of Holstein Friesians, fed on a TMR basis and housed year-round in cubicles. Milking is through a rotary parlour and all the milk goes for Mozzarella production. Herd average of milk sold per cow, per year is around 10,300 litres.

The farming enterprise is based on 1400 acres, mostly down to grass, including 300 acres of winter wheat, which is mainly used for straw and home-grown feed production as part of a TMR diet. Part of the feeding regime includes wheat and barley straw and the business has recently invested in a new, high capacity Teagle C12 Bale Processor - which was designed for contractors or ultra-large dairy units.

Farmer, Phil Davies commented, "We really only use straw for feeding purposes, most of which are in the form of large square bales, bought in from local suppliers. We wanted a reliable and high capacity bale processor that required minimal labour input, but also had a very high throughput and milling efficiency. I researched the market and, our local dealer Tallis Amos Group (TAG) also made the recommendation of the Teagle C12 and it's been working very well here for us. It's probably best to talk with our operator Rafel, who can explain the benefits of the machine for our operation."

The Teagle C12 Bale Processor, can mill straw to between 20mm and 100mm depending on end user requirements, is probably the largest bale processor of its type and can take most large square bales through its top-loading hopper.

Bale processor operator Rafel Ras added, "Depending on the quality of straw and how dry or hard it is, we can usually get through around eleven tonnes of straw per hour. It's a one-man machine, which doesn't need a lot of operational management and so is very easy to use. We normally bunker around ten tonnes of straw in one go, to supply the Shelbourne Reynolds TMR mixer. Ten tonnes of chopped straw will normally last for about eight or nine days. We chop to about one inch (25mm) and we normally feed either 450kg or 600kg square bales into the hopper with ease. This Teagle C12 has a great processing capacity and we would normally get through ten tonnes in an hour or less.

What we like about this machine compared with other straw processors, is that it consistently mills the straw nice and short and so it blends with the TMR mix very well. Other brands tend to leave a lot of long straw and that would normally get wasted or picked-over by the dairy cows."

Ludchurch Farms use a John Deere 6210R to power the Teagle C12 Bale Processor. Screen options enable variation of chop size. Bluetooth control from the operator can be effected from up to 50 metres from the machine and so maximises ease of use while loading. Concluded Rafel, "This is a really good machine and I really like working with it. It's simple, easy to use and does what it says it will do. What else could we wish for?"



MAJOR 2600 GALLON LPG TANKER

13500L GARDA PUMP & RAIN GUN

800/65R32

6.1M 6" HOSE

WIDE ANGLE PTO

WORK LIGHTS & BEACON

HYDRAULIC CHANGE OVER

REAR LINKAGE COMPATIBLE

TAG PRICE
£19,750

AVAILABLE WHILE STOCKS LAST. PRICE EXCLUDES VAT



JOHN DEERE XUV GATOR

SERVICE

ALL OILS & FILTERS CHANGED

FULL SAFETY INSPECTION

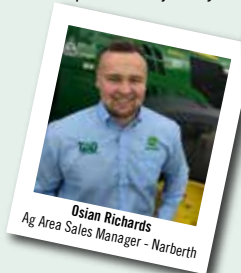
FULL MACHINE COMPONENT INSPECTION

£250
+ VAT

CALL YOUR LOCAL BRANCH ON 0345 222 0456 TO BOOK IN AT A TIME TO SUIT YOU

NEW TEAM MEMBERS

It's always great to have a new member join the team and we'd like to introduce some of our most recent members. A company is only as good as it's employees and the skills and experience that they bring will further strengthen the team and help us on our journey to deliver our customers the best service in the industry.



In addition to the above, we have also recently welcomed 3 Agricultural Technician Apprentices and 3 Parts Assistants to the team across our 4 branches.

To find out more about a career with Tallis Amos Group, visit www.tallisamos.co.uk/careers

0345 222 0456



HARVESTING BENEFITS FROM THE POWER OF TWO!

Buying two new smaller combines, instead of one large combine, has been the policy for Herefordshire farmer Mark Bennion and it's paying off every time! Every four years, they change out their two John Deere T550 combines and replace them with brand new models and because the operating hours are so low, the trade-in values make it a very sensible option. But also, there are other benefits to consider!

Mark, his wife Annie and their son George, farm 1600 acres at Rose-Hill Farm near Ledbury. Their cropping plan includes 500 acres of winter wheat, 320 acres of herbage seeds and 100 acres of cider apples, together with 120 acres of sugar beet and 350 acres of maize for their 1.2 MW AD Plant. In addition, they also carry out agricultural contracting for their neighbours, mainly for combinable crops.

Commented Mark Bennion, "With such a large acreage of high-value herbage seeds, timeliness of harvesting is paramount. Our grass crops will need harvesting before we get into the wheat, and it's much easier to gain high capacity output in the herbage seeds with two combines, each with twenty-two-foot headers, instead of one large combine. There's also the fact that in Herefordshire, we have lots of narrow lanes and, moving a large combine can be impractical. The real benefits are down to the output that harvesting over forty foot at a time with two combines, means we can be a lot more efficient. But it's not just down to harvesting capacity where we score. The used value of a smaller John Deere combine - like the T550 is comparably much greater as a percentage of the original cost, due in part to there being a greater demand for smaller used combines."

Since the 1980s, the Bennions have acquired their John Deere combines from Tallis Amos Group (TAG) in Leominster and purchased T550 in 2012, again in 2016

and this year - the 2020 models came full AutoTrac ready and installed with JDLink. "Simon Amos at TAG has given us some great deals for our trade-ins," added Mark, "we don't get more than about one hundred fifty hours on them each season and so they are really under-used and therefore attract a better-used value. The maths between the cost of one large combine versus two smaller combines becomes sensible when you look at their value after four years. When you compare with the initial outlay - I think it's a pretty good deal really!"

With JDLink being part of the package, last year, Mark Bennion's main combine operator, David Fleetwood, won the top combine performer for the entire TAG territory. That means he set-up the combine to its most efficient, used the least fuel per acre, had the least crop losses and the best output performance. Each machine's performance was recorded and evaluated by TAG via JDLink to compare how and where the most savings can be made. "If you compare the total output of these two machines," commented Mark, "you will see that they will outperform a much larger machine. Therefore, we can cover our acreage a lot quicker, when the combining conditions are at their best. Having two machines, also means we can better serve our contracting customers, because we can attend two customers at once. That is a big benefit, especially when the crop is ready for harvest and the weather conditions are not looking so good.

TAG have given us great back-up service and support and we have not experienced any major breakdowns from any of our John Deere combines, they've performed really well. For us, the package we get from TAG and John Deere, suits us perfectly, gives us the best return on our investment and makes life a whole lot easier."

GETTING STARTED WITH PRECISION AG & TURF #3

I now have my AutoTrac Ready tractor connected with my Greenstar Equipment. I am concerned about security, what are my options?

Yes

Is my John Deere GreenStar equipment lockable?

No

Unsure? Contact us

The New GreenStar Generation 4 equipment listed below will support all of the latest security features

1. SF6000 receiver
2. 4240 and 4640 universal displays
3. Machine mounted displays and receivers are integrated into your JD machine so all the components are an integral part of it

The older GreenStar equipment below is unable to support the latest security features

1. Gen2, ITC, SF300, SF3000 receivers
2. GSD Brown Box, 1800, 2100, 2600 and 2630 displays

Basic mechanical locking kits are available for all receiver types, both old and new. Please contact your local TAG Precision AG/Turf specialist for more details

Contact us to have the software updated and the security Pin Code functionality enabled, with a Free pin protected sticker!

Contact us for a free quotation on upgrading to the latest Generation 4 displays and StarFire receivers, allowing you to benefit from all the latest features

CESAR Data Tagging, Object and Active vehicle tracking devices are available and are installed by our qualified registered technicians

Visit tallisamos.co.uk/agricultural/precision for more information on transforming your field operations and working efficiency



STOCKMAN'S TRACTOR IS A BIG BOOST TO PERFORMANCE

Farming some 700 acres on the Welsh borders in New Radnor, Will Lloyd single-handedly takes care of the entire operation with 1400 ewes and 25 suckler cows and calves. He only brings in temporary labour when he needs it. He might also use contractors for any ploughing or mowing, but most of the land is down to grass for grazing and silage. Farm buildings are tight and restricted and Will has just invested in his first-ever John Deere tractor, the new 6120M fitted with a 603R loader.

"I used to have a Deutz with sloping bonnet for the visibility around the yards, and we also have a Massey and it was time to change out," commented Will Lloyd. "When I got the quotes for a new Massey and also for a John Deere, they were about the same price. As the John Deere is a step-up, I decided to order a 6120M with a 603R loader from Tallis Amos Group (TAG) in Leominster. It's turned out to be a great decision."

Will Lloyd chose the latest John Deere 6120M with sloping bonnet and a Command-Quad transmission. It comes with 120hp, boosted to a maximum 133hp. But what has really impressed Will is the Command Quad transmission.

"We all know how tiring it can be with loader work," added Will, "especially when muck loading or bale handling, constantly de-clutching and changing from forward to reverse. But, this Command Quad transmission on my new John Deere does away with that problem. The forward and reverse selector is on the joystick, so there's no need to touch the clutch, just

use the brakes, select forward or reverse and the job's done. I can work at this all day long and not feel tired. The loader has a great lift capacity and both visibility from the driving position, as well as manoeuvrability around our old yards is greatly improved over what we have been using. The quality of build of the John Deere compared with my previous brands is certainly a significant step-up the ladder. As one of our farms is twenty-five miles away we also do a lot of road work. Even with the loader fitted, there's no sway, it's very comfortable to drive and you just feel safe."

Will Lloyd's tractors clock-up around 500 hours a year and servicing is taken care of by TAG technicians. Added Will, "the TAG team have been very helpful with installation and support of a new product and I've found the 6120M to be a real weapon. Its performance is remarkable and it's a bloody good tractor, and I would recommend this to all the Welsh farmers and stockmen, because it doesn't cost any more, but it comes with much higher quality and better performance."



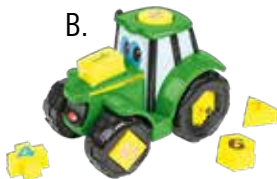
*Order by 7th December for
Guaranteed Christmas Delivery!**

We stock a wide range of Toys, Merchandise,
Clothing and Collectables that are suitable for the whole family

CHRISTMAS BEST SELLERS!



£400



£16.99



£84.99



£14.99



£16.99



£48.99



Available in
Ages 1-16 years

£39.95



Available in
Ages 1-12 years

£31.95

A. John Deere Childrens 12V Gator - MCE42646X000

C. John Deere 9620RX Limited Edition 1:16 - MCB009818000

E. John Deere Black Polo Shirt - MCDW0015100

G. John Deere Childrens Overall - MCS1040910

B. John Deere Learn & Play Tractor - MCE46654X000

D. John Deere Steering Wheel Knob - MCXFA1566

F. John Deere Adults Overall MCDW020KP

H. John Deere Childrens Overall - MCDW00240A

* Guaranteed Christmas delivery is subject to manufacturers availability



CONTRACTOR SAVES HIS CUSTOMERS BIG TIME ON FUEL COSTS

Pembrokeshire contracting firm Sean Savage Agri, recently took up the John Deere Fuel Guarantee programme offer through Tallis Amos Group (TAG) in Narberth and the results showed their customers saved big time on fuel costs. Based near Pont-yr-Hafod, just north of Haverfordwest, Sean Savage Agri has been in business since 2002 and focusses on slurry and waste management with a choice of umbilical, tanker or muck-spreading tasks within a radius of 25 miles from base. They also offer lime-spreading, plus mowing and tedding services throughout the region. In the majority of cases, their farmer customers provide fuel for the job.

Having recently purchased four new John Deere tractors from TAG, which brings their fleet to seven John Deere 6155Rs and three John Deere 6155Ms, they were introduced by TAG to the John Deere Fuel Guarantee offer, which guarantees a refund on excess fuel if you use more fuel than John Deere claims or, refunds 'twice' the value of fuel as a credit for any lesser amount of fuel used. The fuel usage is measured through the tractor's on-board JDLink telemetry system and is monitored directly by TAG.

Sean Savage, founder of the contracting business explained, "We are always very conscious about maintenance, running costs, wear and tear and performing efficiently in the field. If we don't need full power, we don't use full power, which means we save fuel. Typically, our tractors will clock-up anywhere between 2700 and 3200 hours per year and so potentially we are using a lot of fuel. We were delighted when TAG showed that we had saved fuel to the value of between £800 and £1200 per tractor. Careful setup and operation, combined with the efficiency of John Deere tractors meant that we had reduced fuel consumption all-round. That's great for

us, but as in most cases, our customers are supplying the fuel so it's our customers who are the real winners - savings made directly into our customers' pocket."

Typically, some obvious actions adopted which could significantly reduce fuel consumption might include ensuring correct tyre pressures, removal of unnecessary ballast, avoidance of rapid acceleration and hard braking and regular servicing and maintenance.

"Some of the best fuel efficiency occurred on the 6155R with triple mowers and when we were using the umbilical spreaders," added Sean, "with the power and reserve back-up of the 6155R, we don't need to operate at full engine revs, so by backing the engine down, we are saving fuel and it all mounts up. We have a team of fifteen operators in our business and we have all adopted this minimum wear, low-cost attitude because it's better for our customers, it's better for our business and if it means saving money all-round, then everybody wins."

Sean was one of the first customers to purchase a 6820 in Pembrokeshire and has used John Deere's throughout his contracting business. "We love the reliability of the John Deere," added Sean. "we have other brands of tractor which we are trading out for new John Deere's because they just don't come close. One particular tractor was costing more money to run and so we just had to move it on. We get great back-up from TAG, we like driving the John Deere's, they are comfortable and more technically advanced. And now, we are getting paid because of their fuel efficiency. It's a no-brainer - what's not to like?"



Ron White (left), Nick White (centre) and Steve White; "farm trailers on the road, should be subjected to stringent MOT tests..."

SAFETY MATTERS FIRST!

Anear-miss, involving a passing tractor and trailer, jack-knifing and colliding with the farm truck, prompted a farming family to have all their trailers undergo the Tilly Trailer Test programme to ensure they were road safe.

As a truly family affair, Ron White (grandfather), Steve White, (father) and Nick White (son) run the pig unit, together with John White (grandfather), Paul White (father) and Andrew White (son) who run the dairy enterprise of FE White & Son, on 350 acres just outside Wootton Bassett.

Recently, an accident occurred, when Steve's 19-year-old daughter was slowly driving a Nissan Navarra along a narrow country road, when a tractor and empty trailer - travelling at speed in the opposite direction, braked hard and jack-knifed, colliding with the Nissan. Although it caused serious structural damage to the vehicle, luckily, Steve's daughter was not badly injured, but it could have been worse. It appeared that the brakes on the trailer were not functioning properly.

Commented Ron White, "When I saw the damage to the truck, I was amazed that my granddaughter had walked away without any serious harm. But what it prompted me to ask was why farm trailers on the road aren't subjected to stringent MOT tests, just like lorries and other vehicles? It appears that the oncoming tractor and trailer had insufficient or ineffective braking capability and the sudden braking caused it to lose control, risking damage to both operator and passing traffic."

Steve White added, "I immediately thought about our fleet of trailers which when fully loaded, could be as much as sixteen tonnes - plus the tractor, so a total of twenty-five tonnes or more! I wanted to be sure that all our equipment was safe, both for our operators and other road users. So, I contacted Darren Barber, the Service Manager at our local TAG Branch and asked them to come out and check

all our trailers and make sure they were to the necessary standards to meet the test regulations.

All TAG branches are official Tilly Test centres with authorised technicians. The Tilly Trailer inspection process will check all lights to make sure they are functioning correctly and check tyres to make sure they are of legal tread depth with no bulges, cuts or cord showing. Checks completed as part of the test include; the towing eye thickness, suspended drawbar, U bolts and springs, pins, bushes, and all hydraulic connection and hoses. Likewise, wheels and nuts, structural integrity, brakes, drums, bearings and general condition. Once the trailer has passed its inspection it receives a pass certificate which is applied to the trailer and it is recommended this test is carried out on an annual basis. TAG carry out a high volume of these tests to ensure road safety and trailer integrity.

"We had all four of our bale trailers tested and TAG found some minor faults but put everything right to ensure they were road legal," added Steve, "I was very thankful because if it had of been one of our trailers that had put someone else's life in danger, I would have been mortified. The certificate costs just £20 and a full test on a twin-axle trailer only £170, that's a small price to pay when compared to the cost of a life."

"I'm thinking we need to lobby the NFU" added Ron White. "They need to bring in legislation that ensures that all agricultural trailed equipment and vehicles have a thorough test programme - just like our cars and lorries do on the road. Without an MOT, our vehicles are illegal and that's how it should be for farm equipment.

I'm hoping other local farmers agree with me and that we shouldn't be using equipment on the road that is unsafe and putting people's lives at risk. With a Tilly Test you can be sure that your trailers are safe and roadworthy."

TILLY YOUR TRAILER

The Tilly Trailer Test scheme was launched following the tragic death of 19-year-old farm worker Harry Christian-Allan in 2014.

Determined that action needed to be taken in an effort to prevent similar incidents, Harry's mother, Jane Gurney launched the Tilly Your Trailer campaign.

It's a campaign that since won the full backing of the NFU Mutual and the majority of trailer manufactures in the UK with various safety seminars being given at shows and events up and down the country promoting Tilly Your Trailer and the Head to Tow app.

At TAG, our authorised and trained technicians carry out a comprehensive 18-point Tilly Trailer inspection. This can be done safely on your site or at any of our branches. We can even contact you after 11 months to arrange a re-test ensuring peace of mind year after year.

As it has always been, trailers are subject to the HSE PUWER 98 Regulations and this covers both trailers that go on the road and those that never do so.

Regulation 5 of PUWER

- Every employer shall ensure that work equipment is maintained in an efficient state, in efficient working order and in good repair.
- Every employer shall ensure that where any machinery has a maintenance log, the log is kept up to date.

ACOP Guidance:

- A formal system of planned preventative or condition-based maintenance is required on equipment where the failure of safety-critical parts could result in immediate or hidden potential risks.



Pete Gash
Customer Support &
Training Manager

TRAILER TESTING

Don't think it's safe, Know it's safe.

Regular testing of your trailer ensures the safety of your operators and those around them, as well as ensuring you meet your legal obligations to comply with HSE PUWER 98 Regulations



Tilly Trailer Testing can be carried out at any of our 4 branches or onsite/farm and involves an 18 Point inspection, including brakes, hydraulics, suspension, drawbar, axles and lighting all carried out by a TillyPass authorised technician.

2 Wheel Trailer – £150

4 Wheel Trailer – £170

Pass certificate valid for 12 months, Annual testing is recommended, prices are subject to vat & certification costs

EXPERT CHECK: PREPARATION IS EVERYTHING

The end of Harvest is the perfect time to book your equipment in for an Expert Check. Your machine will be serviced and our John Deere trained technicians will complete a full check over to recommend any repairs.

An out of season Expert Check is also a great opportunity to take advantage of competitive out of season parts and labour prices and to help ensure maximum uptime of your equipment next season.

Get your machine ready to deliver your best season yet. Book an Expert Check Today.

Combine Expert Check

Consists of 180 checkpoints including header, feeder house, threshing and separation components, cleaning shoe, grain handling and residue systems plus a thorough clean down.

FROM £360

Sprayer Expert Check

Consists of 260 checkpoints including pumps, lines, booms, nozzles, mechanical and electronic systems plus a thorough clean down. Also includes a FREE NSTS Test!

FROM £250



Expert Check includes;

- Detailed Technical Diagnosis
- Assessment of Electronic Components - via John Deere Service Advisor Remote
- Comprehensive Machine Report
- Free quote for subsequent repair work and replacement parts
- Discounted parts on early order promotions
- Direct consultation and information on Field Kits and Attachments
- Advice on Machine Optimisation and Settings



**EXPERT
CHECK**

Self-Propelled Forage Harvester Expert Check

Consists of 170 checkpoints which include the cutter head, blower system, bearings, tolerances, electronic systems and a thorough clean down.

FROM £450



Baler / MoCo Expert Check

Consists of 100 checkpoints which include wearing parts, drives, clutches, optimisation settings and a thorough clean down.

FROM £260

15% PARTS & LABOUR DISCOUNT

**ANNUAL SERVICE
OFFER!**



**ON ALL JOHN DEERE COMMERCIAL MOWING EQUIPMENT BOOKED
IN FOR FULL ANNUAL SERVICING BEFORE 18TH JANUARY 2021**

EX-HIRE

Ref	Year	Model	Specification	Approx Hours	TAG Price
DN19HBK	2019	8345R	50K, IVT, ULT, ILS COMMAND ARM 5 x E-SCV'S ACTIVE SEAT HD CAT 4 DRAWBAR AIR BRAKES JOYSTICK	875	£166,000
FA18XZH	2018	7310R	50K, IVT, ULT, ILS COMMAND ARM 5 x E-SCV'S CAB SUS F/L & PTO AIR BRAKES JOYSTICK	600	£148,000
VA18EVD	2018	7290R	50K, IVT, ULT, ILS COMMAND ARM 5 x E-SCV'S ACTIVE SEAT AIR BRAKES JOYSTICK	1200	£115,000
DP68FTY	2018	6250R	50K, IVT, ULT, TLS COMMAND PRO HCS A/TRAC 5 x E-SCV'S CLIMATE F/L & PTO AIR BRAKES JOYSTICK	1375	£123,000
VX68EKR	2018	6215R	50K, IVT, PREM, TLS COMMAND ARM HCS A/TRAC 4 x E-SCV'S AIR BRAKES JOYSTICK	1550	£101,750
DW19HGM	2019	6195R	50K, IVT, ULT, TLS COMMAND PRO HCS A/TRAC 5 x E-SCV'S CLIMATE F/L AIR BRAKES JOYSTICK	1280	£108,750
DP68FTT	2018	6195R	50K, A/Q, SEL, TLS HCS A/TRAC 4 x E-SCV'S CLIMATE AIR BRAKES	750	£96,750
DP68FTO	2018	6175R	50K, A/Q, SEL, TLS HCS A/TRAC 4 x E-SCV'S CLIMATE AIR BRAKES	1150	£84,250
DA68KFY	2018	6155R	50K, IVT, ULT, TLS COMMAND ARM HCS A/TRAC 4 x E-SCV'S CLIMATE F/L AIR BRAKES JOYSTICK	875	£90,000
DT18XHV	2018	6155R	40K, ECO/Q, SEL, TLS HCS A/TRAC 3 x E-SCV'S CLIMATE	600	£79,000
DG68XCW	2018	6155M	40K, A/Q, TLS MCS A/TRAC 4 x MSCV'S A/CON HIGH LIFT	680	£68,000
DF19RYO	2019	6145R	50K, IVT, PREM, TLS COMMAND ARM HCS A/TRAC 4 x E-SCV'S AIR BRAKES JOYSTICK	1100	£86,000
DU20FCY	2020	6145R	40K, A/Q, SEL, TLS HCS A/TRAC 3 x MSCV'S	1075	£75,000
HT18ZKP	2018	6130R	50K, A/Q, SEL, TLS HCS A/TRAC 3 x E-SCV'S AIR BRAKES	700	£66,750
DU69DZW	2019	6130M	40K, P/Q, TLS 3 x MSCV'S AIR CON HIGH LIFT HD BRAKES LG PUMP	550	£57,000
DV20LWP	2020	6120M	40K, A/Q, TLS MCS 3 x MSCV'S AIR CON HIGH LIFT HD BRAKES LG PUMP	550	£54,500

USED MACHINERY

**FEATURED
PRODUCT**



31025075

John Deere T550 Level Land 2016 **£120,000**

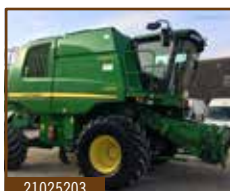
350 HRS, LATERAL TILT, CHOP/CHAFF,
HARVEST MONITOR, 5.2M UNLOAD
AUGER, 3 SPEED ELECTRIC SHIFT
TRANS, 8000 LTR GRAIN TANK, GRASS
KIT, C/W 620R HEADER



11019260

John Deere C670 HillMaster 2011 **£95,000**

1541 HRS, 30K, DUAL RANGE
CYLINDER DRIVE, HARVEST
MONITORING, C/W 625R HEADER



21025203

John Deere C670 HillMaster 2011 **£97,950**

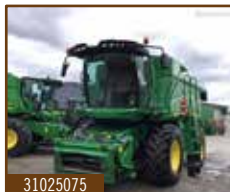
1301 HRS, 30K 3 SPEED TRANS,
6.1M UNLOADING AUGER,
AUTOTRAC READY, C/W 625R
HEADER



11013576

John Deere W550 Level Land 2014 **£89,950**

595 HRS, LATERAL TILT,
HARVEST MONITOR, ELEC
SIEVES, STRAW CHOPPER, C/W
620R HEADER



31025075

John Deere T550 2016 **£120,000**

713 HOURS, LATERAL TILT, CHOP/
CHAFF, HARVEST MONITOR, 5.2M
UNLOAD AUGER, 3 SPEED ELECTRIC
SHIFT TRANS, 8000 LTR GRAIN TANK,
GRASS KIT, C/W 620R HEADER



51018119

John Deere 7400 2003 **£40,000**

4449 HRS, 3 SPEED HYDRO,
IVLOC HEADER DRIVE, 40 KNIFE
DRUM, AUTO SHEARBAR ADJUST,
REAR SCV (NO HITCH), C/W
630A HEADER



51023084

John Deere 8600 2016 **£168,550**

1463 HRS, 40K PRODRIVE, 40 KNIVES,
DURALINE PACKAGE, CRANE, AUTO
COUPLER, SPOUT & REVERSING
CAMERA, TWINLINE ADDITIVE TANKS,
C/W 639 HEADER

Call 01386 576 666 for more information. All prices Ex-VAT

USED MACHINERY

**FEATURED
PRODUCT**



21022294

John Deere V451M

2019 **£28,500**

VARIABLE CHAMBER, 2.2M PREMIUM PICKUP, ROTOFLOW HC, WINDROW COMPRESSOR ROLL, NET WRAP - COVEREDGE COMPATIBLE FIXED GAUGE WHEELS



31022669

John Deere F440

2015 **£17,000**

4233 BALES, 13 KNIFE MAXICUT, 2M PICK UP, ADDITIONAL NET STORAGE, AUTO GREASER, HYDRAULIC BRAKES



31020635

John Deere C441R

2018 **£43,950**

7946 BALES, 25 KNIFE MAXICUT, 2.2M PICK UP, TANDEM AXLE



21025182

Hesston 4900

£6,500

70000 BALES, DOUBLE KNOT TYING, 6 STRING, 1200 X 1280 BALE



21026161

John Deere 338 + 131

2014 **£19,950**

JOHN DEERE 338 REAR BUTTERFLY MOCO AND JOHN DEERE 131 FRONT MOCO



31026687

John Deere 131

2011 **£6,750**

3.1M FRONT MOUNTED MOCO, BOLT ON BLADES, METAL CONDITIONER TINES



31026650

John Deere 331

2010 **£5,950**

MOUNTED MOCO, BOLT ON BLADES

Call 01386 576 666 for more information. All prices Ex-VAT

**FEATURED
PRODUCT**

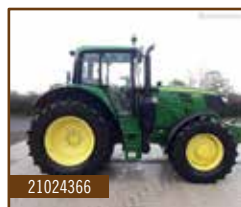


John Deere 6155M

2020 **£78,000**

109 HRS, 40K 20/20 COMMAND
QUAD, TLS, 3 X SCV, AIR CON, PICK UP
HITCH, HYDRAULIC TRAILER BRAKES,
INCREASED LIFT CAPACITY

51026834



John Deere 6155M 2018 **£59,950**

1399 HRS, 40K 20/20
AUTOQUAD, TLS, 3 SCV, 3 SPD
PTO, AIR CON, INCREASED LIFT
CAPACITY, PREMIUM LIGHT
PACKAGE

21024366



John Deere 6155R 2016 **£57,500**

5076 HRS, 50K DIRECT DRIVE,
TLS & CAB, 3 X ESCV, AUTOTRAC
+ ACTIVATION, F/L & PTO,
HYDRAULIC TRAILER BRAKES

51026107



John Deere 6155R 2016 **£42,000**

8963 HRS, 40K AUTO QUAD, TLS
& CAB, F/L & PTO, AIR BRAKES,
EXTRA WORK LIGHTS, 4 X SCV

51023137



John Deere 6150R 2013 **£44,500**

7173 HRS, 40K AUTO POWER,
TLS, AUTOTRAC READY +
RECEIVER, AIR CON, 4 SCV,
PICK UP HITCH, F/L

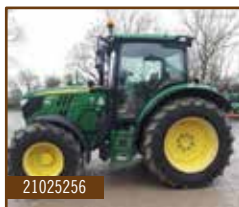
31025597



John Deere 6140R 2014 **£40,225**

7297 HRS, 40K POWERQUAD,
TLS, 3 SCV, EXTRA OIL RES,
POWER BEYOND KIT

31026073



John Deere 6130R 2018 **£66,000**

1458 HRS, 40K 24/24 AUTO
QUAD ECO, TLS, 3 ESCV, AIR
SEAT, DUAL BEACONS

21025256

Call 01386 576 666 for more information. All prices Ex-VAT

THE NEW 6M



JOHN DEERE

EXPECT MORE!

NOTHING RUNS LIKE A DEERE



VISIBILITY

- Lowered hood and new corner post display
- 360° LED lights
- Panorama Roof



PAYLOAD

- 4.7 t vehicle payload
- 5.7 t rear hitch lifting capacity



MANOEUVRABILITY

- Small 4.35 m turning radius
- New Compact CommandARM
- Electronic joystick with reverse
- Minimal height of 2.71 m

See your dealer for more information and details or go to www.deere.co.uk

CALL YOUR NEAREST BRANCH FOR MORE DETAILS

EVESHAM

Hinton on the Green
Evesham
Worcestershire, WR11 2QT

BIBURY

Meadowlands
Bibury, Cirencester
Gloucestershire, GL7 5LZ

LEOMINSTER

Southern Avenue
Leominster
Herefordshire, HR6 0QB

NARBERTH

Redstone Road
Narberth
Pembrokeshire, SA67 7ES

0345 222 0456

WWW.TALLISAMOS.CO.UK