



SENTINEL

KEEPING YOU UP TO DATE WITH ALL THINGS TAG

AGRICULTURAL TURF RESIDENTIAL



MAY 2018

IN THIS ISSUE

OPTIMISATION CLINIC
PAGE 5

EXPERT ALERT - NEW
TECHNOLOGY
PAGE 6

ADBLUE - DO'S
AND DON'TS
PAGE 14

THE LAND IS OUR FIELD

WWW.TALLISAMOSGROUP.CO.UK

STARTING BLOCKS!

There's nothing quite like a bit of hot sun beaming down on the back of the neck to get the grass growing and the fingers twitching. At last, after a pretty dismal winter we've got evidence of the 'silly season' starting and at TAG - we're ready for it. On the agricultural side we've had an almost record season of winter servicing bookings for tractors, combines, forage harvesters and balers. Likewise in the Professional Turf sector, many of the high-end golf courses and amenity facilities have been very proactive, getting their precision mowers and wide-area mowers ready for business. These professional courses get scrutinised more than most by their users and members and so TAG winter servicing is for them a major priority and, from what we've seen so far, they are looking really good. While most of our customer winter service orders have or are being completed, we still have room for a few more, if you haven't got round to booking your machine in give your local TAG service department a call. You'll be glad you got it ready in time!

You'll see through this issue of Sentinel that we are making a 'Harvest Promise' on parts for grass and grain equipment, so take a look. We will guarantee to match any price out there for genuine John Deere harvest season wearing parts - without question! We are also offering very competitive pricing for professional mower cylinder regrinds. Our Parts departments across the entire group have already received high volumes of replacement parts for stock, ready for the busy season ahead and if for any reason we don't hold an obscure component in stock - we can normally get it overnight, ready for breakfast next morning.

We are also pointing out some of the challenges that operators are finding with the storage and dispensing of AdBlue. Follow the Do's and Don'ts in this article and you'll have a trouble-free harvest.

For all our customers, we care about our support for you. Customer service is our number one priority and we are here to help you when the going gets tough. Our out-of-hours support lines are now open and our branches are starting the summer hours opening times. We're like a coiled spring ready to respond to any emergency machine repairs, maintenance and servicing - but then you wouldn't expect anything different from the TAG team!



Simon Amos

GENERAL DATA PROTECTION REGULATION (GDPR)

The GDPR is a regulation in EU law on data protection and privacy for all individuals within the European Union. It also addresses the export of personal data outside the EU. The new regulations come into force as of May 25th 2018

Tallis Amos Group (TAG) complies with this new legislation and if you do not wish to receive mailings from us, please either write to us at; Administration, Tallis Amos Group, Hinton on the Green, Evesham, Worcestershire WR11 2QT or, go to our website at www.tallisamosgroup.co.uk to remove your name from our mailing list.





PROFESSIONAL TURF UTILITY VEHICLE FROM TAG

John Deere's ProGator utility vehicle is hard at work everyday on professional golf and amenity sites around the world. It's the preferred utility vehicle because it comes with features and specifications designed specifically for the professional.

Take a look at the ProGator 2020A - specified with a four-cylinder 25.4kW (34hp) engine and five-speed transmission it's capable of operating speeds up to 30.7 km/h (19mph) and has a carrying capacity of 875kg. It's got plenty of stopping power with hydraulically operated front and rear disc brakes.

Add the HD200 Select Sprayer and you have a multi-purpose self-propelled sprayer, perfect for large areas of amenity maintenance. The HD200 comes with 750 litre capacity and a choice of boom sizes to suit your requirements. It includes

an accurate 'auto-rate controller,' a hydraulically driven diaphragm pump and an intense agitation system - so that the efficacy of the spraying mix is kept in suspension throughout the spraying cycle. As a convenience for the operator, it also includes an integrated hand wash tank - just to keep things clean and tidy.

Want to find out more? Check out our TAG website at www.tallisamosgroup.co.uk or call your TAG turf sale executive to discuss your specifications.

ALL MAKES UNDERTAKEN STARTING FROM

£130

See Service
Department
for details





OPTIMISATION BRINGS MACHINE EFFICIENCY



As part of our commitment to customer support TAG has been running a series of customer clinics for 6R Series tractors. The aim is to broaden operator awareness in how to get the best from their John Deere tractor. Evesham and Bibury branches completed their events during the Spring of 2018, with Leominster and Narberth holding their 6R Clinics in the autumn of 2018 - watch our website for further announcements.

The clinics included sections on;

Maintenance and servicing tips - what to check, when to check and coordinating service schedules to maintain ultimate machine performance

Operations, controls and optimisation - a review or how to set the tractor and implement combination, gear choice, engine revs and forward speed, whilst giving maximum output with minimal fuel consumption.

Integrated solutions - reviewing FarmSight, MyJohnDeere.com, JDLink and Job Management - reviewing the automated data collection and information resource that aids for enhanced management procedures in both the field and the farm office.

Online Parts ordering through John Deere and Kramp - the latest facility for ordering your spare parts online and either picking them up from your local branch or having them delivered to your door

Ben Tallis, Managing Director at TAG commented, "This free event was designed to ensure customers understand the full functionality and operation of their John Deere 6R tractor, it is important to everyone at TAG that customers get the most from the investment they make. I'm delighted that over 120 people have had the chance to understand more about John Deere's innovative features including FarmSight and JDLink. In addition Kramp offer 500,000 parts vis the TAG website, all customers who signed up for an online account on the night are entitled to £30 off their first order."





EXPERT ALERT - THE NEW TECHNOLOGY THAT SETS US APART

As part of further advances in connected customer support TAG have been selected to trial a new system from John Deere. Any TAG customers with JDLink enabled John Deere equipment will be able to take advantage of free Expert Alerts. This industry first system uses technology first developed for the aircraft industry - algorithms constantly monitor machine systems and use this data to predict upcoming failures before they happen, allowing pro-active repairs to be made.

Expert Alert utilises JDLink connectivity to provide a remote machine monitoring system which will enable TAG to contact customers about an impending or potential error issue communicated from the machine in the field directly to the TAG service centre. The system means instead of being just a diagnostic tool, it now evolves into a prognostic technology that is almost predicting what might happen once it analyses data collected from the machine. By being ahead of the game, TAG can then identify the potential issue, contact the customer and plan for a prompt service or maintenance call by a TAG technician to correct the fault or error - often before any failure occurs.

The overall benefit of Expert Alert means that TAG can respond even quicker to impending or potential machine faults, so minimising downtime and any possible malfunction affecting other vital components in the equipment. It also reduces service and maintenance costs and improves operational efficiencies to get work completed on time with fewer service interruptions.

Typically, if there is an error code from a self-propelled machine in the field it could show a blue error code - which

might suggest a low fuel-level or similar; it might show an orange 'non-urgent' error code, which is advisory that an item needs to be checked/serviced or replaced soon; or it could flash a red error code, which means the operator should stop the machine and await for a prompt TAG service technician to visit. The error codes appear on the equipment screen to advise the operator, at the same time as they appear on the TAG service centre monitor, so everything is coordinated between TAG, the customer and the machine in the field.

In addition to this Expert Alerts will be a standard specification fitment that is automatically enabled once permission is given by equipment owner. There are no service charges for the system, it will be part of the TAG customer service package to provide the most advanced service support in the field.

Expert Alert has just been honoured by the American Society of Agricultural and Biological Engineers as one of the year's most innovative designs to product engineering in the food and agricultural industry.

In the coming months our Precision Ag team will be contacting customers with eligible machines to invite them take part in the trial.

USED MACHINERY



11020740

JD 8360R (2014) £105,000

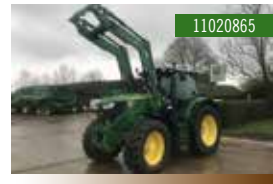
Autopower 40K 710/70R42 & 600/70R30 7In Color Touch Display Cab Prem Cvii Prem Radio Five Remote Cylinder Control Pick Up Drawbar & Hook IIs. Hid Light Pkg R2, 3027 Hrs



21019653

JD 6170M (2014) £46,000

Autoquad Plus Lhr 20/20 40K, Standard Cab, Air Seat, Air Con, 3 Scv, 540/65 R30 Front Wheel, 650/65 R42 Rear Wheels, 5256 Hrs



11020865

JD 6150R (2014) £59,950

John Deere 6150R w/Loader 2014, 4178 Hours, 50k Autopwr Command Arm, Electronic joystick Quicke Loader, Front 540/65 R30 60%, Rear 650/65 R38 10%



11020739

JD 7280R (2013) £76,000

AutoPowr 40KPH, 600/70R30 40%, 800/70R38 30%, 4 spools, F/L +PTO, 3818 hrs, 5000hr powergard Plus Warranty

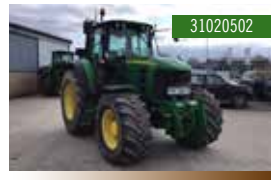
0% From £12,666 PA *



11020326

JD 6155M (2016) £65,000

Autoquad 40K, 3 M-Scv, Rear 520/85 R38 90%, Front 480/70 R28 90%, Very Tidy All Round, 650 Hrs



31020502

JD 7530 Premium (2007) £37,000

50K Autopowr, 650/75R38, 600/65/R28, TIs & Cab Suspension, Front Linkage, Air Brakes, 3 E-Scv Very Good Condition, 7430 Hrs

*Finance illustration based on financing 50% of retail on a 1+2 annual payments at 0%. Finance is available for business users only in the UK, is subject to approval, conditions apply.



11019615

FEATURED PRODUCT

0% From £13,333 PA *

JD 7280R (2013) £80,000
 AutoPowr 50K 4WD. Front Linkage Command Arm. Airseat. Power Beyond Puh 5 Spools. Rear Wheel Weights Isobus And Autotrac 710/70R42 Rear 600/70R30 Front Wheels & Tyres, 3606 Hrs



51018119

JD 7400 (2003) £49,500
 C/W 630A Header Eng Hrs 4448, Drum Hrs 3069, 650/75R32 Michelin (50%), 480/80R28 Goodyear (25%), 3 Speed Hydro - 4Wd, Ivloc Header Drive, 40 Knife Drum, Auto Shearbar Adjust, Rear Scv (No Hitch)



51019969

Claas 890 (2004) £80,000
 Jaguar Profistar, Grass Only Machine, C/W Pu300hd Grass Pick Up, 2561 Hrs



11019770

FEATURED PRODUCT

0% From £13,333 PA *

JD 7260R (2012) £80,000
 Autopowr 40K, 4 E-Scvs, 710/70R42, 600/70R30, Cast Wheels. Trelleborg Tyres. TLS. Pickup Hitch. Bar Axle. 7983 Kg Lift, Premium Radio, 2467 Hrs



51018868

Claas 682 (1992) £12,500
 2WD, Rear Hitch, Twin Additive Tanks, 4094 Hrs



51020153

QUICKCUT6B 400 HEADER £12,000
 WHOLECROP HEADER C/W TRAILER TO FIT JD 7000 SERIES SPFH

*Finance illustration based on financing 50% of retail on a 1+2 annual payments at 0%. Finance is available for business users only in the UK, is subject to approval, conditions apply.



83-07555

JD 842 (2010) £9,750

2M Pick Up, Hi-Flow, Baler, Low Bale Count - 11,781 Bales



51019323

JD F440R (2014) £18,500

Fixed Chamber Round Baler, C/W, 2M Pick Up Roller Compressor, Maxicut 13 Knives, 500/55-20, Tyres, Standard Gauge Wheels, 540Rpm Gearbox, Trac Plus Monitor



31018212

JD F440M (2015) £19,995

Round Baler, 2M Pickup, Maxicut Hc13 Knife, Silage Version, 19/45-17 Tyres, Auto Chain Lube, 540 Rpm



31019610

JD 331 (2011) £7,500

Mounted Mower Conditioner, Steel Conditioning Tines, Very Tidy Condition



11018606

JD 530 (2011) £9,500

12/75-16 Wheels, 1000 Rpm Drive, 21 Spline Shaft, Wide Angle Drive Shaft, Hood For Wide Spread



31019795

Kuhn FC283 (2010) £4,750

2.8M Mounted Mower Conditioner, Nylon Tines



31016322

FEATURED PRODUCT

0% From £9,725 PA *

Kramer 8095T (2016) £58,355

Ex Demo! 101Hp 40K Boom Extension, 3rd Service Pressure Release, Rear Axle Lube, Air Seat, Radio & Aircon, Continental 425/75R20, Hyd Trailer Brakes & Light, Connector, Ball Hitch, 1.2M Pallet Forks, Includes Free Bucket And Power Grab



21017024

Krone KW 7.92 Rotary Tedder

(2016) **£9,000**

2016 Build First Used 2017, 8 Rotor, Headland Management, Excellent Condition



51013102

Pöttinger 422 Single Rotor Rake

(2011) **£4,995**

4.2M Working Width, 3.3M Rotor Diameter, 2.29M Transport Width, 0-6 - 1.65M Swath Width, 12 Tines Per Rotor & 4 Tines Per Arm, New Stock Clearance Item

Call 01386 576 666 for more information. All prices Ex-VAT

WWW.TALLISAMOSGROUP.CO.UK



51019991

K Two Rodeo 1600 (2013)

£15,000

16T, Twin Axle, Silage Sides, Hyd Rear Door, Grain Chute, Sprung Drawbar, Flotation Tyres, Mud Flaps



21019575

JD T560 (2011) £115,000

LI Combine, Lateral, Tilt, Air Seat, Autotrac And Monitoring Ready, Premium Straw Chopper, Chaff Spreader, Windrow Deflector Rake, Dual Cyl Drive, Trailer Hitch, 622R Header & Trolly Rape Ext, 937/663 Hrs



11019260

JD C670 (2011) £110,000

Cw 625R 25FR Trolley, 882 Separator Hours, 1215 Engine Hours, 30K Transmission, Dual Range Cylinder Drive, Harvest Monitoring, Hir Work Lights In Cab Roof, Hd Feeder House Chain, 6.1M Unloading Auger, 800/65 R32 Front, 480/80 R26 Rear



31020535

JD 1450 (2006) £40,000

615R Header & Trailer, 2Wd, Front Tyres 650/75R32 90%, Rear Tyres 12.4R24 90%, 1484 Hrs



31020398

Rau Explorer B-36 (2008)

£15,000

Rau Explorer 24M B-36, Alloy Boom, Steering Axle, Individual Boom Fold, 300/95R46 Tyres, 20.8R38 Tyres, Hyd Jack



31019994

Amazone UF1501 (2004)

£12,000

Mounted Sprayer, 24M Booms, Triple Nozzles



51019594

FEATURED PRODUCT

JD 7780I (2015) £150,000

Prodrive 40Km Full, Autolube, 40 Knife Drum, Kernelstar Kp Elec., Adjustable, Advanced Header Control, 22 Q-Tatch Weights, Puh, Additional Std Maize Kp, 650/ R32 Mich, Harvest Lab, Eng Hrs 1692 + C/Head 1091, C/W 630C Grass Header



31011876

Lemken Sirius 9 (2010) £16,000

1900 Lit, 24M Boom 12/18/24 Boom Shut Off Wash Off Kit, Self Leveling, Digital Tank Control



51015429

JD XUV 855D (2013) £9,500

Steel Wheels - Tyres 40%, Full Cab + Glass Doors, Front Work Lights, Rear Work Light, Full Cab & Glass Doors, Agricultural 'Limited Use' Road

Call 01386 576 666 for more information. All prices Ex-VAT



DEMO FORAGE WAGON
Toro Combiline 6010L Available
Ask your sale representative for
more details

Clean forage, Healthy cows.

PÖTTINGER TOP RAKES

- Equipped with TOPTECH PLUS Rotors
- Consistent shaped swaths thanks to large diameter rotor cam tracks

PÖTTINGER Finance available to business users only. Subject to terms and conditions. Details upon request.
Alois PÖTTINGER UK Ltd. T: 01536 272220, info.uk@pottingeruk.co.uk, www.pottingeruk.co.uk. Authorised and regulated by the Financial Conduct Authority only in respect of agreements regulated by the Consumer Credit Act 1974.

 **PÖTTINGER**

SPECIAL TAG PRICE

Teagle Dual Topper 285 Only £5250 + VAT

- 2.85m cut width
- Suitable for material up to 5cm diameter
- From 50HP to 100HP / Category 2 linkage
- PTO speed 540 or 1000 rpm with interchangeable pulleys
- Can be mounted either in-front or behind tractor
- Hydraulic side shift to offset machine
- Double skinned body for strength and durability



Offer available while stocks last



Max Evans - Parts Manager, Bristol branch. Received the Parts Tech of the Year award. Max completed a 3 year Turf Parts Tech course at which he achieved NVQ Level 3 in Parts Operations, Certificated Functional Skills, Parts Advisor Accreditation (ATA - Automotive Technician Accreditation) all as part of the JDU training programme.

TOP HONOURS FOR TAG STAFF

At TAG, our biggest asset is our people. We are proud of our teams of technicians, after-sales support staff, administrators, sales team and of course our managers. Every year and, on an ongoing basis, we invest heavily in staff training throughout the company, because our aim is always to provide the best in customer service.

For example most of our service and parts technicians enrol on a highly advanced programme of focussed courses, run from the John Deere University, near the UK headquarters in Nottinghamshire. The programme is recognised by industry institutions and accreditation is under Land-based Technology Awards or commonly known as LTAs. The LTA scheme is administered by the Institute of Agricultural Engineers (IAgrE) and is designed to raise standards in the workforce and to recognise an individual's ability, skills and experience.

Already this year we have had a number of staff members graduating from these extensive training courses and one of our team has won the national prize - the top student in the country, so we are naturally highly delighted.

We are a growing company always looking for new members to join our team. With regards to Apprenticeships - either in Parts or Technician roles within Agriculture or Professional Turf we provide full certified training and instruction to help suitable candidates achieve accreditation at the highest level of industry standards.

If you are looking for a well-respected career as a technician or in an after-sales support role, TAG might just be the right company to suit your future needs. Why not check out our website for apprenticeship or qualified job opportunities, complete the application form and come along to meet us?



Matt Morley - Agricultural Technician - Evesham; Matt completed an intensive, four-year qualifying programme and is now a certified LTA3.



Matt Smith - Parts Advisor - Bibury; Matt has just completed a two and a half year course on an NVQ level 2 programme and is certified as an LTA2.



Tyler Moorhouse - Parts Advisor - Narberth; Tyler has just completed two and a half year course on NVQ level 2 programme and is certified as an LT2.



**ONLINE -
ASSOCIATED WITH**



Order any agricultural brand other than John Deere products through our integrated TAG/Kramp Online service, Delivered for free, next morning, no minimum order, direct to your door.

Choose from all brands of genuine parts or non-genuine components. Ideal for wearing parts, nuts and bolts and a whole host of requisites. How do you register? Just go online to our TAG website and go to the parts page where you can register for access to the TAG/Kramp online resource. Rely on TAG - we have your best interests at heart!

IN STOCK NOW!



We stock the complete ranges of Husqvarna and Stihl garden and professional products. Stock includes the very latest battery-powered hand-tools and machinery, strimmers, chainsaws, leaf blowers, shredders, mowers and a whole lot more. We also stock replacement parts and provide full after-sales maintenance and winter-servicing.

Husqvarna and Stihl products are available from all five TAG branches. Come and take a look at what special deals we have on offer!



ADBLUE - THE DO'S AND THE DON'TS

With a much more widespread use of AdBlue in modern diesel engines, we are finding a number of common issues that arise through the improper use or storage of AdBlue. This article identifies the common do' and don'ts to help operators avoid mishaps.

AdBlue is an aqueous solution of urea that is injected into the diesel engine exhaust and through catalytic conversion, changes harmful exhaust gases into nitrogen and water. If it is stored and handled correctly it poses minimal risk to operators and the environment. However, urea solution is very polluting to groundwater and watercourses and there have been reports of accidents where environmental pollution has occurred.

It's important that AdBlue is stored in containers that are specifically designed and manufactured from materials that are suitable for use with urea. The same applies to all storage ancillary equipment, such as valves, dispensing nozzles and pipework.

Secondary containment is essential to reduce any risk of contamination and it's always best to site containers away from any watercourse or surface water drains.

What to watch out for;

Do's

- Always fill AdBlue into the AdBlue tank on the tractor.
- Make sure both the pistol and the outlet are clearly marked.

- Keep AdBlue equipment clean and free from dust or dirt.
- You do not need additional protective clothing to handle AdBlue although protective gloves may be a sensible precaution whilst handling both AdBlue and diesel.
- Ensure dispensing nozzles have an auto-cut-off system.
- If over-heated, AdBlue containers can be chilled with water.
- AdBlue freezes at -11°C , this will not be an issue under most local conditions.
- Make sure only AdBlue to ISO 22241 standard is used, NOT other solutions
- Install appropriate emergency equipment to deal with large and small spills.





Typical example of an AdBlue 200 litre barrel showing ingress of dirt and dust which cause problems in diesel engines.

Don'ts

- Do NOT fill AdBlue into the tractor diesel tank.
- Do NOT fill diesel into the tractor's AdBlue tank.
- Do not use AdBlue when contaminated with water or other substances, especially diesel fuel, dust and dirt.
- Do NOT leave dispensing nozzle end dangling on the floor.
- Do NOT store AdBlue containers in direct sunlight.
- AdBlue can be slippery under-foot when spilt; it does not affect concrete or brickwork. If spilled wash area immediately with water.

The most common issue we deal with from customers is where dirt gets into the storage container or when filling the tractor AdBlue tank. Be sure to wipe away dust and dirt from the AdBlue tank cap on the tractor or self-propelled machine, prior to refilling. There have been some situations where a customer buys a 200litre barrel of AdBlue and the hose nozzle end hangs on the floor between refills, this is where dirt collects and enters the AdBlue tank. It's something that should be checked and avoided to eliminate dirt ingress. If in doubt, ask.

SPECIAL OFFER
200L of AdBlue £100+VAT
Collected Price - Offer ends 31st May 2018

HARVEST PROMISE!

Our harvest promise to you is that TAG will match any price for replacement blades and/or wearing parts for all John Deere mower conditioners and John Deere Self-propelled forage harvesters - like for like using Genuine John Deere replacement parts. Try us out and see how competitive we are on genuine replacement parts.

TAG
tallis amos group





Picture Left to right:

Joe Curtis - Course Manager, David Horrell - Deputy Head Greenkeeper, Bob Culverhouse - TAG Turf Area Sales Manager, Keith Wood - General Manager, Jon James - Greenkeeper, Tom Lily D'cruz - Apprentice Greenkeeper

GLOUCESTER GREEN TEAM

In late 2017, Gloucester Golf Club re-established itself as a member managed club and took on Keith Wood as its General Manager. With Joe Curtis as Course Manager, the new entity quickly established that much of its existing batch of precision and maintenance machinery was unreliable and costing too much to maintain. The club had one nearly new 'rough' mower, which they acquired from the Tallis Amos Group (TAG) last year and so Joe Curtis contacted Bob Culverhouse at TAG to discuss the replacement of key equipment.

Commented Joe, "Keith and I discussed with Bob from TAG about the needs of the club's greens and the tricky ground conditions at Gloucester, especially the back nine which are on steep ground."

Bob Culverhouse recommended the John Deere 8700A Precision Cut Fairway Mower because it was designed to cope with undulating terrain and had excellent traction capabilities. On the strength of past John Deere product experience and the back-up service they had experienced, Gloucester Golf Club also purchased a John Deere 2653B Tees mower and a 2500e Precision Greens mower.. They also decided on a new ProGator utility vehicle to handle all the general duties around the course.

Since the new machines have been installed, feedback has been very positive. "We've been really pleased with our decision," commented Joe "the 8700A cuts our eighteen holes as if it were a flat fairway - even in wet conditions.

Cut of height is so simple and maintenance takes just a few minutes. The entire package is very helpful to us because we only have a small team of greenkeepers, meaning we can get on with the job, cut at almost any time, even if there is a heavy dew."

Maintenance is a very important part of the support requirements at Gloucester Golf Club and Joe Curtis and his team of greenkeepers were taken through the daily schedule of maintenance checks, prior to the machines being installed. Much focus was spent on all the easy access points that cut maintenance time to a minimum. For main service and maintenance support, "I know," said Joe "I can call upon the professional service back-up that TAG provides."

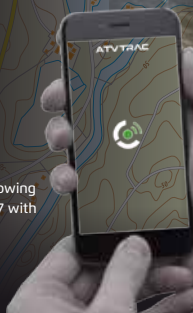
"The decision and purchase process with TAG has been so easy," added Joe, "Bob and his team gives us so much support and back-up and nothing is too much trouble. The quality of finish from the John Deere products and the back-up we get from Bob and TAG has been excellent and it's all we need to help us provide our members with the best golf course around." he concluded.



Revolutionising ATV Security

A discreet ATV tracker that monitors the movements of your asset in real-time, allowing you to view status and usage history 24/7 with notification of unauthorised movements.

www.atvtrac.co.uk



On tractor policies ATVTrac by BikeTrac will get 12.5% discount, along with CESAR's 12.5% - having both will get 25% discount with NFU

TAG OFFER, SUPPLIED & FITTED FROM JUST £399 + VAT



Protecting your ATV, UTV, 4x4, Farming Equipment and Machinery



So how does it work?

Installation

Through our experienced dealer network, your unit will be professionally and covertly installed, with true peace of mind.

Registration

Once your device has been installed, simply complete the registration process and you'll be protected within minutes.

Tracking

Once you've registered you can log-in 24/7 to check your asset's real-time location, battery level, journey history and more.

Device Advantages:

- Personal safety with ATV OVER
- Enhanced employee welfare when lone working
- Advanced ATV security including Geo-Fencing
- GPS & RF based unit, track in real time and can be found in vans, containers
- 24/7 web access
- Transferable between assets

Endorsed by

can-am **Kawasaki**  **POLARIS**  **SUZUKI**

Get in touch: If you would like to know more information about ATVTrac or anything else please don't hesitate to get in touch.

hello@atvtrac.co.uk | [+44 \(0\) 1327 317 980](tel:+44201327317980) (Lines open 9am - 5:30pm)



Thinking of a flail? Think again!



The Major Range of Cyclone Mowers is designed to give a quality finish in grassland and scrubland.

Seven models from **2.0m** to **5.6m**. Patented 'blender' blade system
Delivers a **30%** fuel saving compared to flail mowers.

Call 01524 850501 today to book a demo!



INTRODUCING THE EXPANDED GATOR RANGE



New John Deere XUV865M Gator Utility Vehicle

Offering the company's quietest ever cab, more room for both driver and passengers and an extremely efficient heating system, John Deere's new full-size Gator utility vehicles are designed to maximise year-round productivity and comfort.

Brand new petrol XUV 835M and diesel XUV 865M Gators feature new model numbers and several specification updates.

The 54hp XUV 835M and 23hp 865M offer power steering, a CVT transmission and a top speed of 37 or 31mph (60 or 50kph) respectively, plus a tight turning circle and optimal weight distribution for superior off-road performance. For extra versatility, these Gators can be fitted with a wide range of over 90 attachments from snow blades to winches, and feature a large 42-litre fuel tank to keep the vehicle running longer between fill-ups.

The spacious, pressurised cab can accommodate three people, for off-road use only. This new cab incorporates noise isolation and sound dampening components, making it the quietest yet available on the Gator range. It also offers year-round weather protection and the heating system includes a windscreen defrost feature.

Both these new, sleekly styled XUV Gator models feature ample legroom and a tiltable steering wheel to help reduce driver fatigue during long working days. The versatile and durable cargo box has a load capacity of 454kg, while towing capacity has been increased by a third to 907kg and total payload capacity is 680kg.

Come and take a look at the future in Utility Vehicles at TAG - ask us for a demonstration by calling your nearest TAG branch today!

GUESS WHO'S BACK? A TIMELESS DESIGN, A TIRELESS WORKHORSE

2018 updated John Deere Bunker Rake!
Available to order now!

Newly launched update of the John Deere 1200H Hydro Bunker Rake has new features such as; Hydrostatic Drive, Three-wheel Drive as standard and Hydraulic Rear implement lift. Also includes a Hand-operated and spring-supported heavy-duty front blade for long lifetime and easy operation along with quick-attach functionality, adding great versatility.

Other features include;

- Powerful two-cylinder engine
- Large, tiltable steering wheel with 10-to-1 gear ratio for easy and responsive steering
- Comfortable two-pedal operation
- Ergonomical operation lever layout
- Easy to access for daily service

Call us today to find out more details.



MEET THE NEW JD V451M VARIABLE CHAMBER ROUND BALER



Available on general release for the 2018 harvest, the V451M replaces the 800 series of round balers and has some major improvements;

- Proven inline rotor system taken from the record breaking 900 series baler, gives ultimate crop flow and intake
- Large diameter 5 tine bar 2.2m pickup for durability
- Heavy duty components where it counts, chains, bearings and tension system.
- Available in RotoFlow or MaxiCut

Ask your sales representative for more details and to arrange a demo.

**Intro Offer – V411M
2.2M HC Roto-Flow,
Crop Compressor Roll
£29,750**



EXCLUSIVE TAG OFFERS

BUY NOW!
THESE PRICES WILL
NEVER BE REPEATED!

RUN 41 RETAIL £484
OUR PRICE

£363



SAVING
£121

RUN 51 RETAIL £688
OUR PRICE

£516



SAVING
£172

R40 RETAIL £375
OUR PRICE

£281



SAVING
£94

R43V RETAIL £910
OUR PRICE

£682



SAVING
£228

CALL YOUR NEAREST BRANCH FOR MORE DETAILS

EVESHAM
Hinton on the Green
Evesham
Worcestershire
WR11 2QT

T: +44 (0) 1386 48600

BIBURY
Meadowlands
Bibury, Cirencester
Gloucestershire
GL7 5LZ

T: +44 (0) 1285 740115

LEOMINSTER
Southern Avenue
Leominster
Herefordshire
HR6 0QB

T: +44 (0) 1568 613434

NARBERTH
Redstone Road
Narberth
Pembrokeshire
SA67 7ES

T: +44 (0) 1834 860202

BRISTOL
Unit 16 Avonside
Industrial Park,
Feeder Road, Bristol
BS2 0UQ

T: +44 (0) 117 9770951

WWW.TALLISAMOSGROUP.CO.UK