

EXPERT HEALTH CHECK

READY FOR NEXT
HARVEST

AUTUMN 2021

IN THIS ISSUE:

ALED JONES TROUBLE FREE EX-
PERIENCE WITH MAJOR TANKER

PAGE 3

TAG EXPERT HEALTH CHECK

PAGE 6

SPRINGHILL FARMS
9800 SPFH RELIABILITY
MATTERS MOST

PAGE 9

THE LAND IS OUR FIELD



DEPOT MOVE IN SIGHT

With the cereal and grass harvests safely gathered in for 2021 we're busy putting the finishing touches to our new Kemble depot. Final fit out is well underway, and we'll be starting our move from Bibury later in October aiming to be fully operational from Kemble ahead of the new year.

"It's an exciting step for TAG, demonstrating our commitment to providing the best backup and support to both agricultural and turf customers in the area" said Ben Tallis, Dealer Principal. "Our whole team are looking forward to working out of a modern, custom-built facility."

With autumn upon us, this edition starts to look ahead to 2022. This year more than ever there is a need to plan ahead. The much-reported supply shortages, caused by the COVID disruption to global trade are starting to be felt. Lead times for new machinery orders from many of our suppliers are starting to grow, and for some seasonal equipment there really is a need to act fast to secure build slots ahead of the 2022 season. If you're looking to freshen up your fleet for 2022 talk to your local sales rep today!

When looking at new machinery purchases, have you considered PowerGard Protection & Maintenance? In recent years we have seen a huge increase in

customers taking advantage of these schemes to help with budgeting and to fix costs for up to 6 years. They are available in three flavours allowing you to tailor a package to suit you, from a choice of;

- Fixed price maintenance
- PowerTrain Protection Cover
- Comprehensive Protection Cover

This year, we've introduced additional budget friendly direct debit payment plans making it easier than ever to spread the costs. Ask for more details from your rep.

If your machine still has plenty of years' service ahead of it, make sure it's in good shape for next year, with one of our TAG Expert Health Checks. Our product-expert technicians will go through up to 260 points on your machine, reporting back on any areas of concern so that you can make informed decisions and helping to plan and manage costs. More information on page 6.

Finally, don't miss out on the DEERE STUDIO online shows, covering Foragers, Combines and Tractors. These three evening events promise to deliver a great behind the scenes look at the latest product developments, hosted by Engineers, Product Experts and with a special appearance from Donkey of Grassmen fame (pg. 8).



CONTRACTOR'S DECISION BASED ON PROVEN PERFORMANCE AND RESIDUAL VALUE

After having had nine years of good use out of this Major 2400 gallon slurry tanker, Aled Jones' contracting business, which operates from his base in Llangynin, St. Clears, Carmarthenshire, has decided to upgrade to a larger model Major to handle the growing demands of his customer base. The new Major 2800 gallon LGP slurry tanker comes with autofill, a splash plate and rain-gun attachment, but Aled has also specified it with mountings for a dribble-bar attachment, something which will be arriving later in the year.

"I'm working on several contracts for dairy and beef farmers within a radius of about twenty miles from home," commented Aled Jones, "applying animal slurries to both grassland and arable stubbles. In the past, the splash plate has worked very well and will continue to be used for those customers who prefer it. However, due to the fact that there is a high level of gaseous ammonia losses associated with splash plate spreading, dribble-bars are likely to be more practical and will certainly minimise losses of valuable nutrients. So with my new Major tanker, I can offer my customers both options."

Aled's Major 2800 gallon tanker is a Contractor Spec LGP machine with massive BKT 181 tyres to aid floatation and minimise ground pressure. It also has rubber buffers within the drawbar to aid suspension and improve operator comfort while travelling on the road.

"I bought my last Major tanker some nine years ago from Tallis Amos Group at Narberth, it's done a lot of work and it's served me very well. These tankers are really heavily manufactured, ideal as a contractor's machine and even after all this time it's never let me down and, it also maintained a very high residual value. So, with all

that experience and virtually trouble-free performance, I chose to go with a larger Major with extra specifications. TAG have certainly sold a lot of them in this part of the world and they have a great after-sales back-up service that ensures they have any parts that we might need, in case of any issues. What's important to me is that I need a reliable machine with a reliable service back-up in case I have a problem and TAG fits the bill perfectly. My contracting reputation is built on timeliness and reliability and I need to be on my customer's farm when I say I will and I can't afford to use any equipment that's unreliable.

"Major's tanker is built on a full-length chassis for long life, comes with internal baffle plates to minimise wave motions when in transport and is fitted with an integrated hydraulic braking system, which works really well behind my John Deere 6150R Tractor. It pulls really well on the road and in the field, even when fully loaded and that's a very important safety factor when operating around the narrow lanes of West Wales. I had my new tanker painted black, so you won't fail to recognise me on the road or in the fields around home."



OPERATOR TRAINING COURSES

Ensuring your operators are trained in the safe use of the equipment that they work with is an important Health & Safety requirement, we can help with our range of operator training courses

**BOOKING NOW OPEN
FOR OCT, NOV & DEC!**



OUR BEST SELLING COURSES

- Basic tractor driving
- ATV & Utility vehicles
- Compact tractors
- Ride on mower, cylinder, rotary & flail
- Telescopic handlers
- Counterbalance lift truck

Visit our website to see the full range of operator training courses available



Call Pete Gash on 0345 222 0456 opt 2.
for booking and course availability





NEW FEEDER HAS TOP SERVICE BACK-UP SUPPORT

Working a third-generation family partnership on 400 acres at Little Hook Farm, near Haverfordwest, Pembrokeshire, the Evans family manage a herd of 300 Friesian Holsteins plus followers. Their dairy is based on a twice-a-day milking programme using an indoor production system where milking cows and dry cows are housed throughout their lactation. Young stock are grazed on pastures. Feeding is carried out using a brand new 20cu.m Shelbourne Reynolds Powermix Plus, twin-auger diet feeder system producing a balanced blend that includes homegrown maize, straw and grass silage. The feeding regime twice daily - morning and night. Herd average is 10,000 litres.

Little Hook just upgraded their diet feeder, having had their old one for the past eight years. Commented Dan Evans, "Diet feeders are one of the most important machines in our dairy business, because if for any reason we get a breakdown, then that affects the entire milk yield and we cannot ever let that happen. We've had the Shelbourne Reynolds before and it's mostly been reliable, but the newest version is slightly larger, even stronger than the machine it replaces and it comes with Hardox side wall and wear guides in the bed and Tungsten blades for even greater durability. I think the Powermix is a much stronger machine than anything else on the market and it suits our operation perfectly."

Little Hook Farm bought their Shelbourne Powermix from Tallis Amos Group (TAG) in Narberth, one of the regional Shelbourne Reynolds dealers whose support staff are trained on servicing the machine and, they carry extensive spare parts because they have sold a

lot of these machines in the area. The design consists of two vertical augers with serrated knives which chop and blend the ingredients for a totally homogenous mix and easily handles straw bales, roots and a variety of feedstuffs. Either side feeding is standard as is adjustable discharge height. An integrated weigh-cell system enables accurate blending of feed components and accurate, controlled feeding to different yield groups. Tub capacity is around 10 tonnes depending on dry matter content and it comes on a single axle chassis with hydraulic braking.

"I could have bought the machine from a more local dealer," added Dan, "but when something is a very important and pivotal part of the dairy, I need to be sure of the best back-up, we just can't risk it. TAG have excellent back-up service, always have. An example being that last Boxing Day, the gearbox went on the old feeder and TAG came out very promptly, replaced the gearbox components and we were up back running that very afternoon, so we didn't really lose much feeding time. Now, that's what I call service!"

One of the things I really like with this new feeder is the electronic, wireless control of the machine from the tractor seat. It makes it so much easier to operate behind our John Deere 6130R tractor. It's a great set-up that is highly manoeuvrable around our buildings and we are very happy with the results it produces every time."

PREPARATION IS EVERYTHING

During a TAG Expert Health Check one of our trained product experts will thoroughly inspect every part of your machine.

Carried out as part of a service, or as a stand-alone inspection you will receive full details on the health of your machine, along with any recommended remedial work.

Allowing you to make informed decisions and helping you to manage costs.

Be prepared for next Harvest and book your equipment in today at a time to suit you!

Combine Expert Health Check

Consists of 180 checkpoints including header, feeder house, threshing and separation components, cleaning shoe, grain handling and residue systems plus a thorough clean down.

Sprayer Expert Health Check

Consists of 260 checkpoints including pumps, lines, booms, nozzles, mechanical and electronic systems plus a thorough clean down.

FREE NSTS TEST

Expert Health Check includes;

- Detailed technical diagnosis
- Assessment of electronic components - via John Deere Service Advisor Remote
- Comprehensive machine report
- Free quote for subsequent repair work and replacement parts
- Discounted parts on early order promotions
- Direct consultation and information on Field Kits and Attachments
- Advice on machine optimisation and settings

Expert Health checks are included in all out of season services at no additional cost and form a part of John Deeres Harvest Promise on qualifying machines. Please speak to your local service manager for further details.



**EXPERT
HEALTH
CHECK**



**Self-Propelled Forage Harvester
Expert Health Check**

Consists of 170 checkpoints which include the cutter head, blower system, bearings, tolerances, electronic systems and a thorough clean down.



Baler / MoCo Expert Health Check

Consists of 100 checkpoints which include wearing parts, drives, clutches, optimisation settings and a thorough clean down.





JOHN DEERE

DEERE

STUDIO

NEW JOHN DEERE SHOWS WITH INSIGHTS
AND BEHIND-THE-SCENES INFORMATION FROM
SPECIAL GUESTS, JOHN DEERE LEAD ENGINEERS,
AND PRODUCT EXPERTS

THE
FORAGER
SHOW

13.10.2021

7 PM

THE
COMBINE
SHOW

27.10.2021

7 PM

THE
TRACTOR
SHOW

17.11.2021

7 PM



DEERE.CO.UK/DEERESTUDIO



PRODUCT RELIABILITY AND AFTER-SALES SERVICE MATTERS MOST

Although Springhill Farms only took delivery of their new John Deere 9800 Self-propelled forage harvester in April 2021, it is in fact their third John Deere forager in the last nine years. Farming some 4500 acres of arable land and being one of the largest farming businesses in The Midlands, the company also grows and packages a wide range of tomato, salads and vegetable crops, supplying wholesale and retail businesses nationwide.

Part of the operation includes a major 'green energy' plant consisting of two Anaerobic Digesters and a 19 Megawatt solar park, which produces enough green gas and electricity supplied to consumers, businesses and farmers, equivalent to energising 35,000 homes. This very operation produces green energy which saves over 20,000 tonnes of CO2 compared to typical emissions from energy being produced by fossil fuels.

Operations Manager, Will Parrott said, "We grow and harvest the equivalent of almost five thousand acres of green crop as feedstock every year to feed our anaerobic digesters. On top of that, we take in green crop from other local farmers and growers. Our supply crop will usually consist of two thousand acres of maize, two and a half-thousand acres of grass and up to one thousand acres of whole crop. Everything is harvested and processed by our John Deere 9800 Self-propelled Forage Harvester, which has a very big appetite and keeps us on our toes during harvest! Once the feedstock has gone through the bio plant, we are left with digestate which is a nutrient-rich substance that is returned to the farm-land as an organic fertiliser. Nothing is wasted, which is one of the main purposes of our energy production system."

Springhill Farms' John Deere 9800 comes with a massive 870hp power plant, 3m pick-up, 12 row maize header and a 7m Zurn whole-crop header.

"We've had John Deere foragers since we started the Bio plant back in 2012," added Will, "it's important to have a reliable machine through harvest because we can't afford to have breakdowns when processing the feedstock at the right moisture level for the Bio plant. We also need to rely on the service of our local dealer Tallis Amos Group, and I have to say they have been first-class in after-sales servicing over the years. We took delivery of the 9800 earlier this spring, it replaced an 8700 which we had for four years, and previous to that we used the John Deere 7750.

"Our relationship with TAG is really good. They have a great support team at every level and they help us when servicing and maintaining the forager and our fleet of John Deere tractors. They also are there when helping us to get the best from our advanced technology for 'connected farm management' and on top of that, the John Deere product holds its residual value. So, we are in a win-win situation, we are very happy with the John Deere product and TAG is a great company to work with."



TEAGLE STRAW CHOPPER SERVICE PARTS

GET YOUR STRAW CHOPPER READY FOR ACTION

Teagle

Blades
(TSC1100)



£3.20

Bent knife section
(SC3850)



£6.30

Hardfaced blade
(SC1280)



£34

Thick blade
(SC1220)



£15

Single bent blade
(SC1012)



£30

Double bent blade
(SC1013)



£24

Silage rotor blade
(SC1105)



£24

Bed chain joiner
(SC3351)



£6.75

Prices Exclude vat, Subject to availability. Expires 20.12.21

NEED PARTS FOR YOUR CLAAS SCORPION OR TARGO TELEHANDLER?

Look no further! Did you know that up until 2018 Kramer Allrad produced all Claas Telehandlers.

Due to our working relationship with Kramer, we are able to supply genuine Claas parts at competitive prices. We also have access to the latest information to check parts availability and the option for parts to be sent direct to you or collected from your local TAG Branch.

**Speak your local TAG Parts team
for more info!**



CLAAS

NEW

**9500
9600**

FORAGE HARVESTERS



EXCELLENCE EVOLVED

Our new 9500 and 9600 models bring you more performance where it counts and upgraded reliability: the JD18X engine with HarvestMotion™ Plus delivers a low-RPM torque and power boost, while our new spout design protects electric and hydraulic harnesses.



JOHN DEERE

NOTHING RUNS LIKE A DEERE

**LEARN MORE AT
DEERE.CO.UK OR CONSULT YOUR DEALER**

GPS EQUIPMENT THEFTS RISE



Global shortage of Agricultural GPS Systems sees a increase in thefts

You can help keep your GPS Systems safe from thieves by;

- Using Pin Code protection where available
- Using Pin Protected stickers, they can act as a deterrent
- Ensure all serial numbers are recorded, including modems
- Write your business name in permanent marker pen on the receiver
- Most importantly, remove all equipment and store in a secure area overnight and when not in use

Please do not hesitate to contact your local TAG Precision Ag Specialist for any help on setting up pin codes or for any further tips on how you can help to keep your equipment safe.

Evesham & Bibury
Leominster
Narberth

Trevor Bolton
Chris Bufton
Martin Phillips

07973 543237
07825 173130
07815 102677



OFFERS ON LED LIGHTS

The days are starting to get shorter, but we've got you covered with special offers on LED Lighting!



SQUARE WORK LIGHT

27W Square white light
Front or rear mounting

LA10052

£15



OVAL WORK LIGHT

24W Oval white light
Front or rear mounting

LA10058

£24.95



FLASHING BEACON

24W Amber light, flexi pole
mount

LA20020

£25



SQUARE LIGHT SET

Wireless magnetic 12V
Li-ion, 7 pin

LA60025

£70



CIRCLE REAR LIGHT

Rear, left or right mounting
positions

LA40011

£27



OBLONG REAR LIGHT

Rear, left or right mounting
positions

LA40015

£24.95

All prices exclude VAT. Offers expire 20/12/2021

TRAILER PARTS



JOCKEY WHEEL

Heavy duty 48mm ribbed

STR10165b

£55



RATCHET STRAPS

2" X 12M

TS02120e

£10.99



JOCKEY WHEEL

Standard 48mm straight

STR1620

£15



BREAK AWAY CABLE

EM950

£2.00

All prices exclude VAT. Offers expire 20/12/2021

WE CUT HEDGES NOT CORNERS!

Strong Reliable Machines
Strong Reliable Support

800 SERIES

3 TELE MODELS:

HD860T: 6m REACH
HD870T: 7m REACH
HD880T: 8m REACH

2 VFRT MODELS:

HD865VFRT: 6.5m REACH
HD875VFRT: 7.5m REACH

Shelbourne
REYNOLDS

SHELBOURNE.COM

T: 01359 250415

AG SALES TEAM EXPANDS!



Chris Knapton

Covering the Worcestershire area based out of our Evesham depot. Chris can be contacted on chris.knapton@tallisamos.co.uk or 07980 925252



Leigh Ballard

Covering the patch mainly to the east of our new Kemble depot. Leigh can be contacted on leigh.ballard@tallisamos.co.uk or 07766 540943



Richard Young

Covering South West Herefordshire based out of our Leominster depot. Richard can be contacted on richard.young@tallisamos.co.uk or 07432 466157

1-CLICK

CUT SET-UP TIME BY UP TO 50%

AutoSetup is a powerful new time-saving work planning tool. Simply set up your jobs in advance in the John Deere Operations Center and send them wirelessly to any connected machine. Once you enter the field, all it takes is one click to get started. No delays. No mistakes. And, simplified record-keeping and documentation.

AutoSetup supports all common jobs: tillage, seeding, spraying, fertilising and harvesting. Backwards compatible* to older John Deere and competitive machines, AutoSetup is free.

Ask your dealer to show you how you can save time, cut costs and improve productivity.



GO
OPERATIONS
CENTER



SIGN UP FOR A FREE ACCOUNT [DEERE.CO.UK](https://deere.co.uk)



JOHN DEERE

NOTHING RUNS LIKE A DEERE

*Machine must be equipped with a Generation 4 CommandCenter™ or Universal Display (with minimum SU20-9 software), StarFire™ 3000/GD00 receiver, JDLink™ Connect active subscription and a John Deere Operations Center account. If not already equipped with a MTG 4G a retrofit is required.

KRAMER TELEHANDLER FIXED PRICE SERVICE



Telehandlers are the linchpin of any farming operation, and it is important that they are reliable. To have your machine serviced by an expert with quality parts will ensure when using your machine, the performance is both safe and reliable.

£639
500 HOUR SERVICE

£1399
1500 HOUR SERVICE

Prices exclude vat. Offer expires 28.2.22

REACH FOR THE STARS

It's never been more affordable to upgrade to one of our premium 2022 John Deere Harvest Stars. In celebration of 75 years of combine production we're offering special value packages with savings of up to £12,300. You'll also save even more on their huge throughputs, excellent grain quality and low running costs.

SPECIAL VALUE PACKAGES – SAVE UP TO £12,300



75
YEARS

SELF-PROPELLED
COMBINES



JOHN DEERE

NOTHING RUNS LIKE A DEERE

DIET FEEDER SERVICE

FROM £145*

Servicing of your diet feeders and wagons can help to reduce breakdowns and ensure maximum milk yield potential

Servicing includes:

- Main drive gearbox oil change/check
- Two-speed gearbox (where fitted) oil change/check
- Full greasing of all points including PTO shaft
- Check hydraulic system and performance test
- Check brake systems for performance, wear/adjustment
- Full testing of electronic weigh-cells and control boxes
- Tyre check for damage and correct inflation pressures
- Test and check conveyor and feeding system for accuracy
- Adjust chain and belt drives
- Check for absent blades, sharpness and damage



*Excludes VAT and replacement parts

JOHN DEERE XUV GATOR SERVICE

- ALL OILS & FILTERS CHANGED
- FULL SAFETY INSPECTION
- FULL MACHINE COMPONENT INSPECTION

£262 + VAT



CALL YOUR LOCAL BRANCH ON 0345 222 0456 TO BOOK IN AT A TIME TO SUIT YOU

TAG & SUMO JOIN FORCES



GROWING
WITH YOU

Sumo increases its reach into previously untapped areas with exciting new partnership with the Tallis Amos Group (TAG). Mark Curtis, Sumo's general manager, explains that this provides a big opportunity for Sumo to continue to support both existing and new customers with cultivation equipment, parts and service. The Tallis Amos Group has an extensive dealership network which covers a wide area from Evesham, Leominster, Narberth to Cirencester, servicing farmers from south/west Wales to the Cotswolds.

Simon Amos, sales director at TAG, says the addition of Sumo's cultivation range is a brilliant addition to their portfolio. "Sumo is a strong cultivation brand which complements our existing machinery franchises fantastically. We are looking forward to serving customers across our entire area with quality UK built equipment. We're already up and running with parts and service so new and existing Sumo customers should get in touch with us through their local depot for all their cultivation needs and product support," says Simon.

Mr Curtis finishes by praising the professionalism of TAG. "The level of service that Tallis Amos Group can offer is second to none and this is why we have chosen them as our partner. We look forward to working together to help support our customers to grow the best crops possible," he says.

The full Sumo range will be stocked by TAG and demos will be available from October!



LDS Low Disturbance Subsoiler

Move towards a zero-till crop establishment system using the UK's first Low Disturbance Subsoiler. This machine alleviates subsurface compaction with minimal surface disturbance, significantly reducing grassweed germination.

ARRIVING FOR
DEMO!

Trio Combination Cultivator

The market-leader in alleviating subsurface compaction, mixing stubble and soil, leaving a level surface ready for seeding.



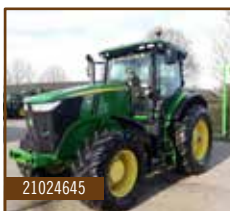
USED MACHINERY



John Deere 7260R
2012 **£65,000**

3164 Hours, 40K A/P, 4 ESCV, TLS, PUH, Foot speed pedal control, Hyd trailer brakes

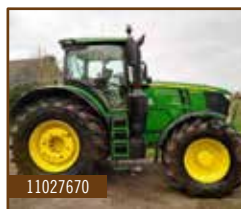
11022794



John Deere 7230R
2014 **£49,950**

5291 Hours, 40K 20/20 CommandQuad, TLS & Cab, A/T Rdy, 4 SCVS, 710/600 BKT Tyres

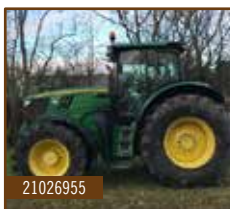
21024645



John Deere 6250R
2018 **£95,000**

5305 Hours, 50K A/P, C/ Pro, 5 SCV, TLS, A/T Ready, CommandArm, PUH, Hyd Trailer Brakes

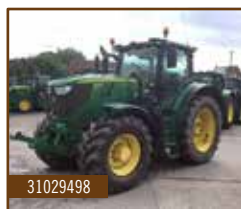
11027670



John Deere 6210R
2012 **£54,500**

8343 Hours, 50K A/P, TLS & Cab, 3 ESCV, HMS, Air & Hyd Trailer Brakes, F/L + PTO

21026955



John Deere 6215R
2016 **£79,000**

5652 Hours, 50K A/P, TLS & Cab, A/T Rdy, 4 ESCV, 650/600 Tyres, Climate control

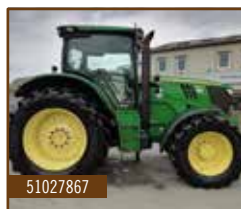
31029498



John Deere 6215R
2020 **£129,950**

800 Hours, 50K A/P, A/T + Act, TLS & Cab, 5 ESCV, 650/600 Michelin Tyres, Climate control

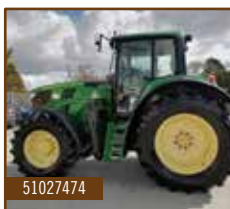
21029525



John Deere 6170R
2012 **£44,950**

8343 Hours, 40K 20/20 A/Q, TLS & Cab, Air seat, F/L + PTO, 4 ESCV, 650/540 Tyres

51027867



John Deere 6150M
2013 **£35,000**

11556 Hours, 40K 20/20 A/Q, TLS, A/C, 3 SCV, 650/540 Tyres, Power Beyond

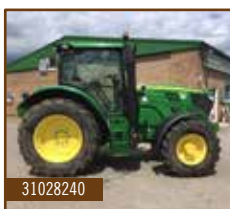
51027474



John Deere 6150R
2013 **£46,000**

5551 Hours, 40K 20/20 A/Q, TLS & Cab, 3 SCV, 520/480 Tyres, Turnable Fenders

31028388



John Deere 6130R
2014 **£44,500**

5596 Hours, 50K P/Q 24/24 + Creep, TLS & Cab, 600/540 Tyres, 4 SCV

31028240

Call 01386 576 666 for more information. All prices Ex-VAT

USED MACHINERY

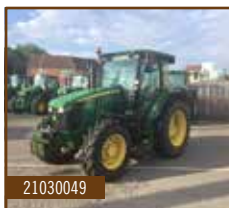


31028263

John Deere 6115R

2013 **£37,000**

6143 Hours, 40K 20/20 P/Q, TLS, A/C, 460/380 Tyres, 3 SCV, Hyd Trailer brakes

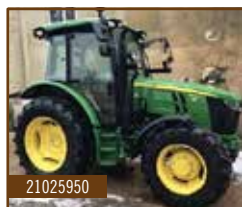


21030049

John Deere 5100M

2019 **£42,000**

424 Hours, 40K 32/16 P/Rev, HI-LO, Air seat, 3 SCV, 3 SPD PTO, A/C, Hyd trailer brakes

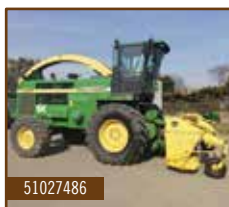


21025950

John Deere 5100R

2018 **£39,950**

1366 Hours, 40K 16/16 C/Q, Air seat, 3 SCV, Turnablefenders, Hyd trailer brakes, PTO



51027486

John Deere 6850

2002 **£29,750**

4653 Hours, 40K ProDrive, 4WD, 40 Knife Drum, C/W 630B Header



51018119

John Deere 7400

2003 **£30,000**

4490 Hours, 40 Knife Drum, Ivloc Header Drive, Auto Shearbar, 630A Header

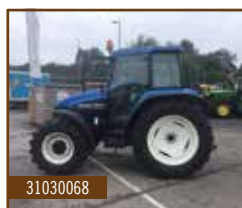


51027113

Kemper 360

2001 **£11,500**

8 Row Maize header to fit 7000 series JD SPFH

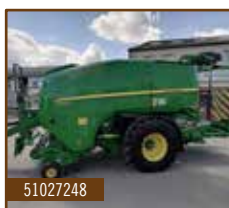


31030068

New Holland TS110

2002 **£25,000**

6359 Hours, A/C, PUH, 2 SCV, 420/380 BKT Tyres @ 75%



51027248

John Deere C441R

2019 **£35,500**

35000 Bales, 2.2M 25 Knife pick up, Caster action wheels, Hydraulic brakes

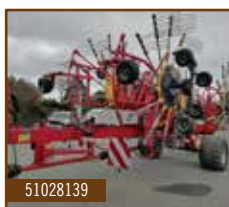


51029163

John Deere R870R

2020 **£28,000**

8.7m Rear Mounted Butterfly Mowers, 6 Spline Shaft, Quick Change Blades, Steel Conditioner tines



51028139

Pottinger 1252C

2014 **£19,950**

S Line 4 Rotor Rake

Call 01386 576 666 for more information. All prices Ex-VAT

EX DEMO



Pottinger Torro 6010
2021 **£71,000**

Tandem steering axle, Hydraulic Brakes, Pickup support roller, 45 Twin blades, Reversible knives

11027303



Strautmann GV3601 CFS
2017 **£47,500**

3000 Loads, 45 Knives, Steering axle, Air & Hydraulic brakes, Electric Pump connection, Decals will be removed

21028719



John Deere S685 HillMaster
2016 **£165,000**

1229 Hours, I Ready, Harvest monitor, Extra fine cut chopper, Rear camera, 630X Header with rape knives on trolley

21029246



John Deere 9640
2005 **£59,500**

2617 Hours, Lateral tilt, Power Sep, Chaff spreader, Universal concave, 620R Header

31028532



John Deere 2256 HillMaster
1997 **£34,950**

4399 Hours, 18ft Header on Trolley. Due in awaiting preparation

51029759



Claas Scorpion 6030CP
2014 **£31,000**

4890 Hours, VariPower, ROPS Enclosed, Manitou Headstock

21027540



Claas Scorpion 7035
2016 **£38,950**

5952 Hours, 40K Eco VariPower, Air Con, Rear PUH, Pin & Cone tool carrier

31028868



Claas Scorpion 6035
2017 **£37,950**

4787 Hours, 40K VariPower EcoSpeed, Air Con, Rear PUH with Service

31027376



Kramer KT276
2017 **£42,000**

2887 Hours, 30K Hydrostatic Trans, A/C, PUH, New tyres, Manitou H/Stock

51028309

EX DEMO



Kramer KT356
2020 **£69,950**

388 Hours, 40K EcoSpeed, A/C, High Cab, Pick up hitch, Reversing Camera & Fan

51026501

Call 01386 576 666 for more information. All prices Ex-VAT

USED MACHINERY



51028516

Teagle Titan 9

2021 **£19,950**

Slurry door, Wide angle PTO shaft, 18.4 X 34 Tyres, 300mm Greedy boards



51027479

Shelbourne 2300

2011 **£9,500**

2300 Powerspread, Manual anti bridge kit



51023599

Sulky X20+

2019 **£5,500**

1500L, 18-24m Spread, Hyd Shutter Tribord 2d, One Hopper Extension, Folding Hopper Cover, Road Lights



21023594

2019 Sulky X30+

2019 **£6,500**

12-28M Spread, Folding hopper cover, One hopper extension, Lights, 2150L Capacity



51026843

Shelbourne PowerMix Pro 25

2017 **£27,000**

25CU/M Tandem Commercial axle, Air / Hydraulic Brakes, Front door, Adjust corner knives



51022168

Shelbourne PowerMix Pro

2011 **£19,500**

22 Cubic capacity, Elevating conveyor

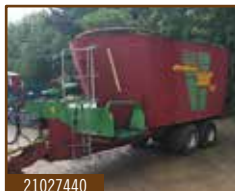


51026159

Shelbourne PowerMix Pro 22

20109 **£16,000**

22 CU/M Tandem axle, Standard weigh scales, Electric controls, Elevating conveyor, Wear kit



21027440

Strautmann VM2000

2007 **£9,500**

20 CU/M Twin axle, Fixed front cross conveyor, Hydraulic brakes, Rear door



11026838

Strautmann VM2401

2014 **£8,950**

Twin auger, Tandem rigid axles, Rear door, Front slide out cross conveyor, Electric controls



51021949

Teagle Tomahawk T8100SC

2018 **£11,750**

Trailed, Swivel chute, Electric Bluetooth controls

Call 01386 576 666 for more information. All prices Ex-VAT

Stock Number	Description	Price
31013992	Stocks wheels with 420/80R26 & 16.9R24 Michelin Tyres	£4,000
51027999	Brand new set of Mitas 650/65R38 & 540/65R28 Tyres	£3,950
31021482	12/4/46 & 11/2/32 Taurus Row crop wheels & tyres @ 90% To fit John Deere 6930	£2,850
51026788	Tyres only, Rear wheel 460/85R38 @ 90%, Front wheel 420/85R24 @ 90%, Michelin. Only done 900 hours	£2,200
31027078	John Deere row crop wheels Alliance 12.4 R46 @ 60%, Taurus 12.4 R32 @ 90%.	£1,950
31024276	Full set of wheel rims to fit John Deere 6930	£1,200
31025571	12.4R46 & 11.2R36 @ 30% On rims	£1,000
31021948	300/95R46 & 270/95R32 BKT Tyres on adjustable rims to fit John Deere 6125R	£1,000
31023574	270/95R48 & 270/95R32 Taurus tyres on adjustable rims	£750
31025459	CST Turf Trax- Front 18x8.50-10 Rear. 26x12.00-12. New take off tyres from a JD X900 series mower	£350
17	Windforce Performax Stud Wheel & Tyre 255/65R17	£25
31016795	EX Demo 2016 Strimech Twin Bale Spike, Manitou Brackets	£400
31026309	Pallet forks to fit Sanderson headstock	£400
21026588	9" digging and 38" grading buckets to fit Yanmar SV26	£420
31026177	Cherry Products Merlo Headstock To Fit Claas Scorpion 6035 Hyd Latching	£650
31029435	7ft 6in rehandling bucket, bolt on sides, JCB q-fit brackets	£695
51028187	Headstock To Fit Kramer 276/2706 To take Kramer attachments	£850
31019668	ALO 170 fork and grab on eurohook brackets, new shop soiled	£1,250
51018497	Shop soiled NEW A064-90 bucket, JCB q-fit brackets.	£1,475
31029818	7ft 6in Fork & Grab, KV Tines to Fit Small Headstock Kramer	£2,000

Call 01386 576 666 for more information. All prices Ex-VAT



JOHN DEERE

NOTHING RUNS LIKE A DEERE



HI, WE'RE THE R FAMILY

PERFORMANCE DOESN'T GET MORE PREMIUM



R4140i/R4150i

We're built for output, with TerrainControl Pro or TerrainCommand Pro, independent wheel suspension, a new Cat IV cab, PowrSpray™ immediate rate control and ExactApply™. Yes, wow!



R900i

My PowrSpray™ solution system delivers ultimate spray quality. You can also get me with section control and the TerrainControl Pro or TerrainCommand Pro for less drift and more speed.



R700i

I'm compact but packed with the advanced features of my larger siblings. I excel in all conditions, I'm easy to use, ready to boost your productivity.

**CURIOUS, CONTACT YOUR LOCAL SALES REPRESENTATIVE
TO FIND OUT ABOUT THE FULL PRODUCT LINE-UP**

CALL YOUR NEAREST BRANCH FOR MORE DETAILS

EVESHAM

Hinton on the Green
Evesham
Worcestershire, WR11 2QT

BIBURY

Meadowlands
Bibury, Cirencester
Gloucestershire, GL7 5LZ

LEOMINSTER

Southern Avenue
Leominster
Herefordshire, HR6 0QB

NARBERTH

Redstone Road
Narberth
Pembrokeshire, SA67 7ES

0345 222 0456

WWW.TALLISAMOS.CO.UK