



THE LATEST OFFERS, NEWS & USED EQUIPMENT

HARVEST PROMISE KEEPING YOU MOVING

SUMMER 2020

IN THIS ISSUE

BREAKING GROUND
ON NEW DEPOT
PAGE 3

NEW APPROACH FOR
MINCHINHAMPTON GOLF CLUB
PAGE 6

ENSURE RELIABILITY
WITH OUR EXPERT CHECK
PAGE 18

THE LAND IS OUR FIELD



THE TIMES THEY ARE A CHANGIN'

Harvest kicked off early this year, the 24th June saw one of our Bibury customers' S785 combine roll into action in Barley. From the comments on social media it looks like this could have been the earliest harvest action in the UK this year. And how different the world looks as we head into a 'Socially Distanced' season. Whilst many of us involved in Agriculture or Ground Care are used to working in relatively isolation, the current Coronavirus pandemic has seen everyone having to adjust ensure the safety of both ourselves, and those around us.

Our parts counters and show rooms are open as normal, those of you who have visited us recently may have noticed the social distancing measures, a requirement for face masks as well as screens in customer areas. These are there in line with the government guidance to help protect both customers and our team members. Whilst we've put measures in place to keep everyone safe, we understand if you'd rather not come in and can offer a parts delivery service, contact your local parts department for more details.

Out on site our service teams are equipped with gloves, masks and sanitiser to help maintain biosecurity. If anyone on your site is exhibiting symptoms of Corona, please let us know so we can re-schedule work to a later date.

Many of our sales team are working remotely to reduce the number of people in a depot, whilst they may not be calling as regularly as you are used to, they are always available on the end of the phone, and are still able to make visits as long as you are happy to receive them and recommended precautions are followed. Whatever your machinery requirements are, you can reach us on 0345 222 0456.

Although much has changed, one thing that remains constant is our efforts to provide all our customers with first class support. Bibury, Evesham and Leominster depots are now operating their extended Golden Harvest hours, with parts counters open from 8am to 7pm. Our dedicated team are backed up by the fantastic Deere Parts Network, this means that even if we don't have the parts you need in stock, we can order up to 6.45pm on a weekday, (5pm Sat, 4pm Sun) for next day delivery to the depot.

Outside of regular hours we are operating an emergency call out service between 7am and 10pm, just call 0345 222 0456 select your local depot and we'll get you through to someone who can help.

Looking to the future we're proud to be able to share our latest development plans for a site adjacent to Kemble Airfield, a new depot from the ground up designed to offer an even better level of support to our customers in the Gloucestershire, North Wiltshire, West Oxfordshire & Bristol areas (Page 3).

From Lawnmowers (Page 8) to tractors (Pages 10 & 13) and balers (Page 10) we've got some great offers for you in this edition, speak to your local rep for more details.

We're delighted to be able to welcome Minchinhampton Golf Club to the John Deere fold following their fleet change of 10 machines. The 12 strong greenkeeping team are already putting the kit to great use maintaining the course in top class condition following their re-opening on 13th May (Page 6).

Finally, whilst the middle of harvest might seem an odd time to be thinking about an out of season service, why not book your slot before you put your machine away for the year? Expert Checks are available on Combines, Forage Harvesters, Sprayers, Mower Conditioners and Balers with big savings to be made on parts and labour, we're also offering a Free NSTS test with every Sprayer Expert Check (Page 18)

WORK STARTS ON KEMBLE PROJECT

We're delighted to announce that we are breaking ground on our new depot next to Kemble Business park. Once completed this will be the new home for TAG covering the Gloucestershire, North Wiltshire, West Oxfordshire & Bristol areas.

"It's been a long time in the planning, and our whole team are excited about the Kemble development" said Ben Tallis, Tallis Amos Group Managing Director. "Agricultural and Land Management equipment has grown in both size and complexity in recent years, making this move will allow us to have a custom built premises, suited to the needs of both our customers and our team."

The build is being done by contractor Perrott Building Services who have a wide range of experience on similar construction projects across the UK. Work is expected to take about 9 months and once complete will become the new home for the Bibury team during 2021.

"As equipment has got larger, we have found workshop space a challenge. Larger work bays with easier access will be great for our Service Technicians" said Darren Barber, Ag Service Manager.

"Having a dedicated Amenity workshop complete with all the equipment needed to maintain grass management equipment will speed up regular maintenance and further develop the service that we can offer to our customers. Our Service team are also looking forward to being in the same building as their parts colleagues as it will make day to day work much easier." added Richard Allard, Group Service Manager.

As the build progresses, we will be posting regular updates on our Social Media, be sure to follow us on Facebook, Instagram & Twitter – Search Tallis Amos Group.



Will Smith - Bibury Ag Technician

Will has recently passed his 3 Year John Deere Agricultural Technician Apprenticeship with distinction!



Darren Barber - Bibury Ag Service Manager "The John Deere apprenticeship scheme provides an industry recognised qualification. To achieve a distinction shows a high level of commitment and hard work. Will is a valued member of our service team at Tallis Amos Bibury and we are very proud of him"



KEMBLE BUSINESS PARK - TALLIS AMOS GROUP



NSTS SPRAYER TESTING



A NSTS test covers all the application components of the sprayer to ensure the machine is working correctly and efficiently, saving you money and ensuring the safety of the sprayer operator and the environment.



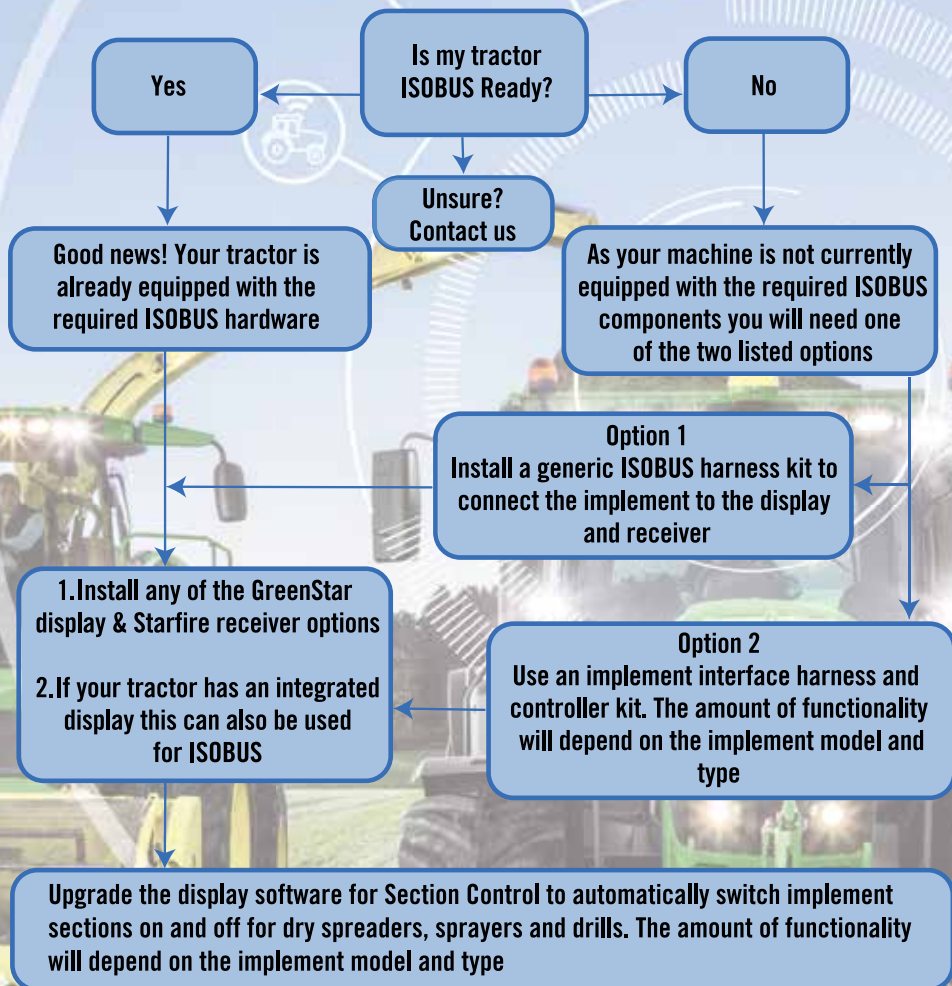
UP TO 12 METER BOOM WIDTH
ONLY £99! +VAT
Plus certification cost

Re-test Requirement - Boom widths over 3m every 5 years and 3 years from November 2020. Many farm assurance schemes require annual testing. Call Pete on 0345 222 0456 opt2. to book

GETTING STARTED WITH PRECISION AG & TURF #2

I now have my AutoTrac Ready tractor, how do I connect my implement?

Section Control automatically controls the sections on an implement and when enabled it utilises GPS information to turn implement sections on and off and reduce overlap in previously applied areas.



Visit tallisamos.co.uk/agricultural/precision for more information on transforming your field operations and working efficiency



A NEW APPROACH FOR MINCHINHAMPTON GOLF CLUB

A: Minchinhampton Golf Club general manager Simon Pope (far left) and courses manager Adam Matthews (centre) with (left to right) John Deere territory manager Nick Ashman, dealer Tallis Amos Group area sales manager Alex Jones and TAG director Colin McIntyre.

Minchinhampton Golf Club's championship **Avening and Cherington** courses near the village of **Avening** in Gloucestershire and **The Old Course** on National Trust-owned Minchinhampton Common are renowned for their year-round immaculate presentation.

Testament to this is that within just seven years of The Cherington Course opening, the R&A chose it as the south-west venue for its Open Championship Regional Qualifying tournament from 2002 to 2007. The Avening Course has since been chosen to host the same event between 2018 and 2023 (now extended to 2024, since this year's Open Championship at Royal St Georges was postponed to next year).

Just one of the 12-strong greenkeeping team led by courses manager Adam Matthews, including workshop manager Will Harris, was furloughed during the coronavirus lockdown, for health reasons. The club decided to keep all the other greens staff working on staggered shifts through the day and into the evening, as much to watch over and protect the courses as to continue maintaining all 54 holes to the highest standard.

This process has also seen the introduction of the club's first John Deere course maintenance equipment fleet of 10 machines bought from dealer Tallis Amos Group (TAG) at Bibury, near Cirencester, on a five-year John Deere Financial lease deal. The new fleet includes three 2750 E-Cut hybrid electric triplex greens and tees mowers, a 6080A PrecisionCut fairway mower for the approaches and a 7400A TerrainCut rotary mower for the surrounds and roughs, plus three electric TE Gator and two diesel HPX Gator utility vehicles.

"We anticipated that the club would need to reopen at very short notice and so it proved," says general manager

Simon Pope. "On returning we wanted to present the courses to the members in as good a condition as we possibly could, so we aimed to keep the same maintenance schedule all the way through the lockdown and be ready to go from day one.

"As an extra benefit, we usually close each of the championship courses in turn during August and September for annual intensive maintenance programmes, but the good work that was achieved during lockdown means we won't need to do that now, which our members are delighted about. I have to commend Adam and the whole team for their admirable effort and positive attitude, they have been absolutely brilliant under the circumstances."

The courses reopened for play on May 13, which coincidentally is Marking Day on Minchinhampton Common. On this day each year around 500 cattle are released on the common for a summer of traditional grazing, and it is part of the greens staff's responsibility to clean up after them on The Old Course when necessary!

"There was certainly a huge pent-up demand from the members to get back playing – I reckon 1300 people played at least one day within 10 days of re-opening," adds Simon. "We already had a very strong membership base, with a waiting list last summer, but the lockdown period saw new membership applications shoot up. We have also now expanded the membership offer, so golfers can play 54 holes across the two sites if they wish. This gives members a lot of variety, especially as we are able to run dedicated two-ball and four-ball courses."

Now 35, Adam Matthews has worked at Minchinhampton Golf Club since he was 16, and became courses manager in January. This coincided with the club coming to the end of its existing five-year fleet deal, and therefore provided



B: Back row (left to right): Charlie Beetge, Ricky Sherwood, Tom Dorey & Heath Taylor; middle row: Ed Parsloe & Richard Martin; front row: Nick Ashman, Simon Pope, Dave Rosselli, Adam Matthews, Will Harris, Colin McIntyre & Alex Jones. (Greens staff missing from photo: Tom Workman, Martin Massey & Matthew Lesson-Magry.)

a good opportunity for Simon and Adam to review every aspect of the club's management, including the machinery. After competitive tender quotes from existing and other main suppliers, the pair were impressed by the presentations made by TAG and John Deere.

"TAG's area sales manager Alex Jones in particular led from the front and it was really his persistence and sound advice that persuaded us to seriously consider using more John Deere equipment than we have done previously," says Adam. "They put forward a very constructive and consistent proposal, and we had a range of machines in twice on demonstration so the team could really test them properly in our conditions.

"We certainly took our time, it was by no means a sudden decision, and we wanted to be very thorough and fair. It was not just about buying new machinery either, other key factors came into play such as after-sales care, trust in the equipment both in the workshop and out on the course, as well as the finance.

"Ultimately, the high level of customer service was what made us believe that the overall John Deere and dealer package was the way for us to go. All our questions were answered quickly, the selection of machines was tailored precisely to our needs and since the deal's been completed, Alex Jones and TAG have continued to provide excellent back-up. We realised that this aspect is so important, particularly when you change to a new supplier."

XUV865M: DO MORE

RRP £22,656

£19,300

SAVE £3,356

**GREEN AND YELLOW OR OLIVE AND BLACK
50K ROAD LEGAL
40/60 SPLIT BENCH SEAT
CAB DOORS, FRONT & REAR WINDOWS
CAB HEATER
ALLOY WHEELS
MAXXIS BIGHORN TYRES
DELUXE CARGO BOX
DATATAG**



PRICES SUBJECT TO VAT

OFFER AVAILABLE WHILE STOCKS LAST

LATEST OFFERS



Husqvarna LC 141i



RRP £399

£370

SAVE £29

- 16" Cordless push mower
- 50 litre collector
- Compatible with all BLI-batteries
- Batteries not included

Husqvarna LC 140S



RRP £329

£300

SAVE £29

- 16" Self Propelled petrol mower
- 50 litre collector
- Steel cutting deck
- Central cutting height adjustment

Husqvarna LC 253S



RRP £499

£449

SAVE £50

- 21" Self Propelled petrol mower
- 60 litre collector
- Light composite chassis
- Central cutting height adjustment

Husqvarna 15iHD45 & 115iL Cordless Bundle

- 18" Hedge trimmer & Grass Trimmer
- Lightweight and easy to use
- Includes Bli20 battery & QC80 charger

RRP £349

£325

SAVE £24



WE SELL THE FULL RANGE OF HUSQVARNA EQUIPMENT, SPEAK TO YOUR LOCAL BRANCH FOR MORE INFO

ALL PRICES INCLUDE VAT

TINES AND BLADES

FOR ALL MAKES

The ground is hard on wearing metal this year – TAG can supply parts you require!

JOHN DEERE, VERTIDRAIN, GROUNDSMAN, RANSOMES, JACOBSEN, RYAN, TORO, GRADEN, AMAZON, WEIDENMANN & MANY MORE



STATELY HOME PULLS ON GPS TECHNOLOGY

Consisting of 100 hectares of parkland with formal gardens amounting to around ten hectares, the stately home of Lypiatt Park, situated near Stroud, Gloucestershire boasts historic buildings that date back to the 14th Century. It's a private estate sited on one of the highest points in the Cotswolds and is surrounded with formal gardens that were initially laid out in the 17th Century. Despite such traditional and historic beginnings, today the well-manicured lawns are taken care-of automatically, by a fleet of satellite controlled robotic mowers. It is the family home of internationally-renowned artist, Daniel Chadwick.

Daniel chose the Husqvarna Automower 550 through the Tallis Amos Group, who are the Husqvarna specialists for the region and provide sales, installation, technical support and after-sales back-up. The Automower 550 offers full remote control which includes theft-tracking via a PC/Tablet, while at the same time providing full mower control via a smartphone. Despite having complex shaped lawns, at Lypiatt Park, the GPS tracked Husqvarna Automower 550 is able to manoeuvre accurately around the entire formal garden area without difficulty. Being lightweight, there are no wheelings - even in soft-ground conditions and they operate at a very quiet 61dB(A) which means they are unobtrusive. Typically, a full charge for the Automower will provide in excess of three hours of mowing, while an automatic recharge at its own station, takes only 60 minutes. Cutting height can be very simply adjusted between 20mm - 60mm and it can handle slopes of up to 45%.

"Each of these Husqvarna robotic mowers," commented Daniel, "has its own specified zone to cover and they can work 24/7 if we decided on that option, and they automatically adjust their mowing frequency according to lawn growth. They have their own charging stations

and they work within a ring fence system and calculate their mowing pattern to cover the entire zone, using a different direction or cut pattern each time. When their battery power depletes, they automatically return to the charging station and recharge, before commencing their mowing cycle. I've found the team at TAG to be excellent with their installation and support back-up, they really know what they are doing and that fills me, as their customer, with total confidence."

"There's a wide mix of obstacles on our lawns," added Daniel, "but they don't seem to bother the Husqvarna at all, On-board sensors use ultrasonic technology to detect potential objects and steer the mower to avoid any collision. They are very quiet operators - which is very important when they can work both day and night. In addition, I have very sensitive hearing and cannot bear the noise of a normal lawnmower and I was finding that on the few nice days when we got the tranquillity of the relaxing garden environment, it was shattered by the constant lawnmower noise.

"As a designer inventor and artist, I really appreciate the design of the Automower, as it is perfectly optimised. It's the right weight, it does precisely what they say it will do, it is totally reliable, easy to maintain and is very well made. Every couple of months I might have to change or rotate the blades - which is a very simple operation, but apart from that, we just let them get on with their job and rarely have to do anything with them. I've been so impressed with TAG and their back-up, as well as with the performance of these mowers, so much so that we now have five of these operating across the entire formal garden area. The entire package is just a perfect solution to our needs."

ACT NOW ON OUR LIMITED MID-SEASON BALER OFFERS

SPECIFICATION

JOHN DEERE F441R

Premium Heavy-Duty Fixed Chamber Baler
2.20m pick up
Auto grease cartridge
Hydraulic brakes
13 knife MaxiCut chopper
1000rpm
Ramp discharge

£28,950
SAVE £23,816
RRP £52,766



**MASSIVE SAVINGS!
ONLY 1 AT THIS PRICE!**

JOHN DEERE V451M

SPECIFICATION



£28,500
SAVE £16,764
RRP £45,264

Variable chamber
2.2m premium pickup
Rotoflow hc
Windrow compressor roll
Net wrap - coveredge compatible
Fixed gauge wheels
Baletrak plus

ASK YOUR LOCAL SALES REP ABOUT OUR FLEXIBLE FINANCE OFFERS.

**TAG EXCLUSIVE OFFER
3 YEARS POWERGARD PLUS
INCLUDED***

6155M : EXPECT MORE

**6 CYLINDER 155HP POWERTECH ENGINE
AUTOQUAD PLUS 20/20 40K
FULL SUSPENSION
3 SPOOLS
HEAVY DUTY AXLE & BRAKES
PREMIUM & BELTLINE LIGHTS
FRONT LINKS & PTO AVAILABLE**



RRP £117,167

£82,750

SAVE £34,417

OFFER AVAILABLE WHILE STOCKS LAST

WWW.TALLISAMOS.CO.UK

0345 222 0456

* Based on 500 hours per year. Tractor must be serviced in accordance with manufacturer recommendations. Image for illustration purposes only

0345 222 0456



HIGHER CAPACITY TANKER, SPREADS THE LOAD

Part of the agricultural contracting services offered by GB & RR Phillips & Son of Hayscastle, near Haverfordwest, Pembrokeshire includes high volume slurry and waste digestate application. The family-run business started contracting in 2010 and offers a wide range of farm services within 20 miles or so of home.

“Waste slurry application has grown rapidly for us,” commented Joshua Phillips, “we used to run a single axle, 3100-gallon Major tanker for several years and upgraded to a twin-axle model Major tanker, with 3500-gallon capacity, back in 2017. We purchased it from Tallis Amos, our local Major dealer in Narberth. It’s been a really good, reliable and easy to maintain machine and typically we are spreading slurry on over three-thousand acres a year, without any issues whatsoever.”

The Major 3500 Tandem Tanker, like all Major tankers, is constructed using a special sub-chassis for the main tank barrel, which enhances the overall reliability and durability of the unit, extending its working life potential and cost-effectiveness. A galvanised finish protects the machine from the corrosive effects of slurry and it has a hinged back door for ease of access and maintenance cleaning. A very heavy-duty twin, steering rear-axle, manufactured to commercial lorry standards means a level of reliability from the running gear that is rarely found on ordinary tankers. Flotation tyres at 710/55R25 means ground compaction is minimised and transport capabilities are very smooth.

“What I really like about the Major tanker,” added Joshua, “is that it comes fully specified with hydraulic and air brakes, it’s fully road legal with regards to

lighting and even when fully-loaded and travelling at 50Kph, it’s stable and travels very smoothly. You almost wouldn’t know you’d got it behind you! The tandem axle with rear-axle steering means it is very manoeuvrable through tight gateways and in restricted yards and the extra capacity over the previous Major tanker, means we can get a lot more done, more quickly and with minimum ground compaction. We use a trailing shoe applicator and everything we do is recorded through our Greenstar GPS system that we have fitted to our John Deere 6155R and Claas 660 tractors, which use RTK GPS. This means we can be totally accurate with our applications and can share this information with our customers for their own management records.

“The after-sales service we get from TAG has been first class. Their parts back-up has been excellent for the Major Tanker and they also support us for the integrated solutions systems we use. All-in-all, we’ve got a great product and back-up here, which means we can always offer our customers total reliability in everything we do.”



Harry Age 5

Back in March Harry whose dad is an AG Technician at our Evesham Branch dressed up as a John Deere Tractor for World Book Day, we think Harry looks fantastic and sure you will agree with us!

JOHN DEERE - TAMMA BIG BALE TWINE EXPLAINED

Large square balers have changed over the years and John Deere Tama twines have had to change to cope with the densities and types of knot on each baler. We carry all types of twine in stock to cope with the different baler densities of today's modern balers, weather conditions and type of crop. Unsure which twine to use for your baler? Visit www.tama-uk.co.uk/tama-assist for more information



John Deere XtraTwine HD Plus 2600m per pack

Specially designed for use in balers in the 'Extra' high-density sector, for making extremely dense bales, or when baling in extreme conditions, high temperatures and low humidity.



John Deere XtraTwine Plus 2800m per pack

The best performing option for all crops and balers where high density is required. Use it for silage and for high density hay and straw bales.



John Deere XtraTwine Long 3000m per pack

A standard big bale twine, suitable for use in all crops and in normal baling conditions.

	Extra spool length LOWER LENGTH SPOOLS => FEWER CHANGES => HIGHER OUTPUT Extra spool length for less spool changes, less waste and higher efficiency.
	Unrivalled knot performance Unrivalled knot performance, flexible and strong for 500% reusable tight knots on most balers.
	Uniform spool shape Uniform spool shape to ensure trouble-free running in the baler.
	OEM Approved The only Big Baler twine range fully validated by ALL THE MAJOR BALER PRODUCERS.
	UV Protection Special UV light inhibitors to withstand extreme exposure over long periods.

TAG PRICES

10,000m - Small Baler - £21.00/pack

3,000m - XtraTwine Long - £46.00/pack

2,800m - XtraTwine Plus - £48.00/pack

2,600m - XtraTwine HD - £50.50/pack (limited)

As well as big bale twine we also carry 10,000 ft spools for your conventional baler

All prices subject to VAT & availability

LATEST OFFERS ON HARVEST PARTS

MOCO KNIVES

Claas (9041778/7)
85p



Kuhn (56150000)
80p



John Deere (FH304879)
83p



BALER / WAGON KNIVES

McHale Wagon Knife (CKN00014)
£16.00



Pottinger Wagon Knife (434.126.001)
£23.00



John Deere Baler Knife (CC45488)
£27.00



FORAGER BLADES

John Deere Narrow body grass (Z69500)
£16.50



Krone BigX (3507730)
£80.00



New Holland (80049945Z)
£17.00



PICK UP TINES

John Deere (CC25176)
£2.25



Pottinger (436.151)
£2.38

Welger (940522900)
£1.70



**GENUINE & COMPATIBLE
AVAILABLE!**

All prices are per item & subject to VAT.



1026R : MANY POSSIBILITIES

- 54" MID MOUNT SIDE DISCHARGE DECK
- HYDRAULIC DECK LIFT
- HYDROSTATIC TRANSMISSION
- DELUXE SEAT
- WORK LIGHTS
- REAR SCV FOR TRAILER TIPPING

RRP £18,519

£15,440

SAVE £3,079

OFFER AVAILABLE WHILE STOCKS LAST

PRICES SUBJECT TO VAT



**ONLY £240
+ VAT**



Ensure your Timberwolf trailed chipper is in tip top condition with a full service and health check
Please call your local branch for quotation on other chipper types / makes

CONNECTED SUPPORT – OUR SERVICE DEPARTMENT WILL KEEP YOU RUNNING

Our after-sales teams have access to several unique cutting-edge remote tools for extending advanced support that helps you optimise machine performance and maximise uptime. Most John Deere machines come with five years of connectivity from the factory to enable dealers to leverage the tools here, providing that you have given your consent.

Remote Machine Setup Support

The Remote Display Access tool significantly reduces your machine setup time, since it allows us to connect with your in-cab-display to assist you with set-up. It also allows us to give you performance enhancement support and will make it much easier for you to communicate with us when you run into issues, which is another big uptime factor.

Remote Machine Monitoring

The operating condition of your machine is remotely monitored by us through John Deere Connected Support tools like Expert Alerts and Machine Dashboard. If the tools indicate that something is wrong on the machine, you'll be contacted immediately with the proactive support you need to minimize the risk of downtime.

Expert Alerts

Expert Alerts, the latest unique system advancement is based on software algorithms that can predict certain upcoming issues before they have a negative impact or cause collateral damage. With diagnostic and repair information generated automatically, our service department can react more quickly and downtime can be reduced significantly.

Service Advisor Remote

The tool that allows us to increase your machine uptime by diagnosing issues remotely without the need for stopping, which lessens the need for multiple visits, reducing repair times and ultimately lowering your costs.





RELIABILITY BOOSTS POTATO ENTERPRISE PERFORMANCE

Salad potatoes are the main production focus for Cresswell Barn Farms Ltd, based in Kilgetty, Pembrokeshire. This family-farming enterprise operates on a combination of partly owned and partly rented land with 190ha of salad potatoes, 15ha of wheat and barley and a similar amount of grass for grazing dairy replacements. Two-thirds of the potato crop are earlies and the remainder is main-crop all grown on contract for the major supermarkets.

Patrick Elliot is the third generation of the Elliot family farming Cresswell Barn and says that, "Our production process relies totally on the reliability and after-sales service of our machinery - if one stops, they all stop - and we can't afford to have that happen! Four years ago we had a demonstration of a John Deere 6155R from Tallis Amos Group (TAG) out of Narberth. It was our first taste of a really advanced Auto-steer, mapping and an integrated solutions system and it has improved our in-field performance big time. We have been so impressed with the tractor and the technology that we have changed out our existing brand and now run four John Deere's and have been very happy with their reliability and performance."

Cresswell Barn now has a John Deere 6155R, a 6250R, a 6195R and a 6130M for loader work and general duties.

"The 6250R is the best yet!" added Patrick "we bought it with a four-year PowerGard and Maintenance plan because it made a lot of sense, knowing to the penny, exactly what our costs were going to be and, because TAG look after it, we won't be receiving any bills for breakdowns - that's all included in the cost. We've also linked to the TAG RTK system and so we get absolute accuracy and efficiency with our GPS signal in the field and across the

entire farm. Likewise we are on the JDLink system, so our maintenance and operating hours information for each tractor, is fed to and managed directly by TAG out of their offices. They let us know when a service may be due or if there is a component not working correctly. Narberth Service Manager, Ceri Poulson will co-ordinate with us, what would be the most convenient time to carry out that service without interrupting our work-flow during the busy periods. Their service and back-up is second to none. When we are busy, we don't want any hold-ups, so they've scheduled a service visit that could be seven o'clock in the morning or ten o'clock at night, just so they are using the available time when we are not using the tractors. They are first-class."

Typical annual hours usage on their tractors varies from around 1200hrs a year on the 6155R and around 800hrs on the 6130M.

"Since we started using the John Deere product and complete management logistics with John Deere's GreenStar, we've seen the whole aspect of our farming enterprise improve considerably." said Patrick, "We've got a full history of boundaries for historical reference and the entire package is backed-up by the TAG service and precision ag support teams, It's been a great decision and a big benefit for our business."



JOHN DEERE BALERS

GREAT BALES BEGIN WITH A GREAT BALER

**AVAILABLE
FOR DEMO!**

L634 LARGE SQUARE BALER

The L600 series balers are packed with features that meet the demand of a modern contractor. Delivering a new bench mark for dense perfectly shaped bales.

SPECIFICATION

90 X 120cm Bale
6 Double Tie Knotters
2.3M High Capacity Pickup
Steering Tandem Axle
Weigher & Moisture Sensor



Built for bigger goals

C441R WRAPPING BALER

High performance capability delivering outstanding bale density and shape. The combination of our proven wrapping system with the heavy duty feeding system and bale chamber will give you top quality silage that will last well into the future.



Excellent for all types of crop

SPECIFICATION

2.2M High Capacity Pickup
25 Knife MaxiCut Chopper
Single Axle
Hydraulic Brakes
Central Greasing

**CONTACT YOUR LOCAL REP FOR
MORE INFORMATION
0345 222 0456**

HARVEST PROMISE

ELIGIBLE MACHINES WITH AN EXPERT CHECK QUALIFY FOR OUR HARVEST PROMISE - BACK-UP WHEN YOU NEED IT. GUARANTEED



24 HOUR PARTS PROMISE

John Deere have invested in the biggest parts logistics network in the agriculture business. And with more machines in the field than any other manufacturer they hold more parts stock than anyone else. It all means they consistently deliver more than 97% of all orders within 24 hours.



BACK-UP MACHINE

We will provide a back-up machine if parts are delivered late. The difference is that we'll take care of everything, not just pay a contractor. As dealers we have the right combines with the right size in reserve.



TRAINING

Our factory trained experts will provide professional driving training not just when you take delivery of your new combine, but they will be on-hand for refresher courses season after season.



EXPERTS IN PLACE

We have full-time, factory trained harvesting experts to set up your equipment prior to the season. They'll also be available to visit you during the season to make sure your machine is always running at the optimum performance level.

* **Eligibility:** All John Deere combines and SPFH max. 7 years old, maintained in line with operator's manual utilizing genuine parts only and Expert Check after season assessment with carried out subsequent repair work as recommended.

TAG - Your True Harvest Partner

EXPERT CHECK: PREPARATION IS EVERYTHING

The end of Harvest is the perfect time to book your equipment in for an Expert Check. Our John Deere trained technicians will complete a full check over to recommend any repairs. An out of season Expert Check is also a great opportunity to take advantage of competitive out of season parts and labour prices and to help ensure maximum uptime of your equipment next season.

Get your machine ready to deliver your best season yet. Book an Expert Check Today.

Combine Expert Check

Consists of 180 checkpoints including header, feeder house, threshing and separation components, cleaning shoe, grain handling and residue systems plus a thorough clean down.

FROM £360

Sprayer Expert Check

Consists of 260 checkpoints including pumps, lines, booms, nozzles, mechanical and electronic systems plus a thorough clean down. Also includes a FREE NSTS Test!

FROM £250



Expert Check includes;

- Detailed Technical Diagnosis
- Assessment of Electronic Components - via John Deere Service Advisor Remote
- Comprehensive Machine Report
- Free quote for subsequent repair work and replacement parts
- Discounted parts on early order promotions
- Direct consultation and information on Field Kits and Attachments
- Advice on Machine Optimisation and Settings



**EXPERT
CHECK**



**Self-Propelled Forage Harvester
Expert Check**

Consists of 170 checkpoints which include the cutter head, blower system, bearings, tolerances, electronic systems and a thorough clean down.

FROM £450



Baler / MoCo Expert Check

Consists of 100 checkpoints which include wearing parts, drives, clutches, optimisation settings and a thorough clean down.

FROM £260

USED MACHINERY

**FEATURED
PRODUCT**



51026062

John Deere 8800

2018 **£200,000**

1155HRS, 40K PRODRIVE, 4WD AXLE, 48 KNIFE DURALINE DRUM, KP CRANE, AUTO PTO COUPLER, PRO TOUCH, HIGH VOLUME ADDITIVE TANK, REAR HYD, C/W 639 GRASS HEADER

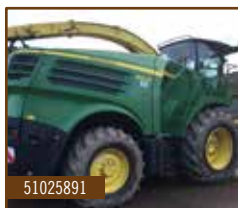


51018119

John Deere 7400

2003 **£40,000**

4449 HRS, 3 SPEED HYDRO, IVLOC HEADER DRIVE, 40 KNIFE DRUM, AUTO SHEARBAR ADJUST, REAR SCV (NO HITCH), C/W 630A HEADER

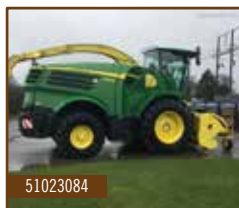


51025891

John Deere 8500

2017 **£164,950**

1187 HRS, 40K PRODRIVE, 48 KNIVES, H/D DURALINE KP, AUTO COUPLER, KP CRANE, AIR COMPRESSOR, HIGH VOLUME ADDITIVE TANK, C/W 639 GRASS HEADER

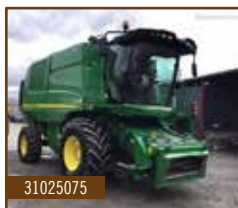


51023084

John Deere 8600

2016 **£168,550**

1463 HRS, 40K PRODRIVE, 40 KNIVES, DURALINE PACKAGE, CRANE, AUTO COUPLER, SPOUT & REVERSING CAMERA, TWINLINE ADDITIVE TANKS, C/W 639 HEADER

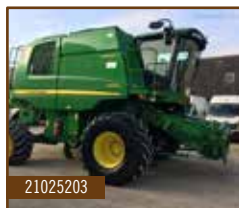


31025075

John Deere T550 Level Land

2016 **£125,000**

350 HRS, LATERAL TILT, CHOP/CHAFF, HARVEST MONITOR, 5.2M UNLOAD AUGER, 3 SPEED ELECTRIC SHIFT TRANS, 8000 LTR GRAIN TANK, GRASS KIT, C/W 620R HEADER



21025203

John Deere C670

HillMaster

2011 **£97,950**

1301 HRS, 30K 3 SPEED TRANS, 6.1M UNLOADING AUGER, AUTOTRAC READY, C/W 625R HEADER



11013576

John Deere W550

Level Land

2014 **£89,950**

595 HRS, LATERAL TILT, HARVEST MONITOR, ELEC SIEVES, STRAW CHOPPER, C/W 620R HEADER

Call 01386 576 666 for more information. All prices Ex-VAT

**FEATURED
PRODUCT**



11022793

John Deere 7280R

2013 **£66,950**

5762 HRS, 40K AUTOPOWER, NEW SET OF 800/70R38 MICHELIN & 600/70R30 BKT TYRES, TLS, ELECTRIC MIRRORS, FOOT THROTTLE PEDAL CONTROL, F/ LINKAGE AND PTO, HYD TRAILER BRAKE VALVE



11024354

John Deere 7250R

2015 **£64,950**

4468 HRS, 40K E23 COMMAND ARM, 5 REAR ESCV's, TLS & CAB, ISOBUS, AUTOTRAC READY, FRONT LINKAGE



21024645

John Deere 7230R

2014 **£55,950**

4820 HRS, 40K COMMAND QUAD, TLS & CAB, 710/600 TYRES, A/ TRAC READY, 4 X REAR SCVS, NO WEIGHTS



11024355

John Deere 7310R

2015 **£85,000**

4521 HRS, 40K E23, TLS, ACTIVE SEAT, 5 SCV, PICK UP HITCH, F/LINKS, 710/600 TYRES, AUTOTRAC READY



21023043

John Deere 8360R

2011 **£69,750**

6647 HRS, 40K AUTOPOWER, 5 ESCV's, ISOBUS READY, CAT 4 DRAWBAR



31023077

Massey Ferguson 5610

2014 **£34,275**

2850 HRS, 40K DYNA 4, F/ LINKAGE AND PTO, 4 REAR SCV, 2 FRONT SCV, AIR CON, PANARAMIC ROOF



31025712

Massey Ferguson 8737

2017 **£85,000**

3910 HRS, 50K DYNA VT, CAB AND AXLE SUSPENSION, AIR AND HYD TRAILER BRAKES, AUTOSTEER COMPLETE, 4 ESCV, WHEEL WEIGHTS, F/LINKAGE & 2 SCV

Call 01386 576 666 for more information. All prices Ex-VAT

USED MACHINERY

**FEATURED
PRODUCT**

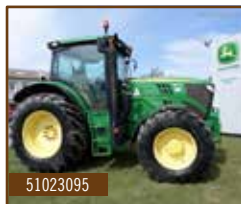


21024366

John Deere 6155M

2018 **£59,950**

1302 HRS, 40K 20/20 AUTOQUAD TRANSMISSION, TLS, 114 L/MIN PUMP, 3 SCV, 3 SPD PTO, 650/65R38 & 540/65R28 TYRES, AIR CON, INCREASED LIFT CAPACITY, PREMIUM LIGHT PACKAGE, ITEC

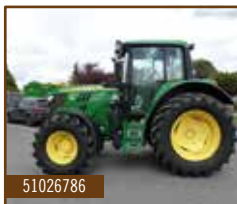


51023095

John Deere 6150R

2015 **£59,950**

3934 HRS, 40K D/DRIVE ECO, TLS AND CAB SUSPENSION, 650/65R38 & 540/65R28 TYRES, F/LINKAGE AND PTO, TURNABLE FENDERS, 3 SCV, ADDITIONAL OIL RESERVOIR



51026786

John Deere 6120M

2018 **£48,500**

1100 HRS, 40K 24/24 AUTOQUAD, 3 SCV, AIR CON, 3 SPD PTO, AIR AND HYD TRAILER BRAKES, POWERFILL BRAKES



51024786

John Deere 5125R

2018 **£53,500**

40K 16/16 C/QUAD, 3 SPD PTO, 3 SCV, 117 L/MIN PUMP, HYD TRAILER BRAKES, PICK UP HITCH, PFC HYDRAULICS, CORNER POST EXHAUST, AIR CON, C/W JD 543R LOADER



51024824

John Deere 5090M

2013 **£31,000**

978 HRS, 12X12 POWER REVERSER, MECHANICAL HITCH CONTROL, 2 SPOOLS, CORNER POST EXHAUST, AIR CON



31025725

John Deere 5100R

2019 **£49,750.00**

30 HRS, 40K 16/16 C/QUAD MANUAL, 3 SCV, AIR CON, HYD TRAILER BRAKES, 3 SPEED PTO, AIR SEAT, PFC HYDRAULICS



31023543

Kubota M8540

2009 **£14,500**

5250 HRS, BI SPEED FRONT AXLE, PICK UP HITCH, 2 SCV, 380/85R24 AND 7.5R16 TYRES

Call 01386 576 666 for more information. All prices Ex-VAT

**FEATURED
PRODUCT**

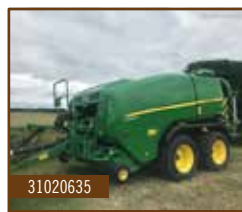


31022669

John Deere F440

2015 **£17,000**

4233 BALES, 13 KNIFE MAXICUT
BALER, 19/45-17 TYRES, 2M PICK
UP, ADDITIONAL NET STORAGE, AUTO
GREASER, HYD BRAKES



31020635

John Deere C441R

2018 **£49,950**

WRAPPER BALER, 2.2M PICK UP,
MAXICUT 25 KNIVES, TANDEM
AXLE

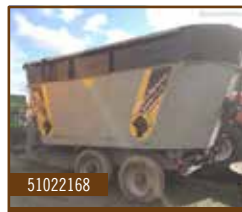


21026161

John Deere Triple Mowers

2014 **£22,000**

388 REAR & 131 FRONT MOCO'S



51022168

Shelbourne PowerMix Pro

2011 **£17,000**

22 CUBIC CAPACITY, ELEVATING
CONVEYOR



21026866

Sulky DX20+

2018 **£4,500**

12-24M SPREAD HYD SHUTTER,
1500L HOPPER, FOLDING
HOPPER COVER
ROAD LIGHTS, MECHANICAL
BORDER SPREAD ECOBOARD



31026489

Opico 575 Quiet

2011 **£17,500**

MOBILE DRIER, GAS BURNER,
LITTLE USE



51026467

Polaris Ranger

2018 **£9,000**

357 HOURS, DIESEL, ROAD
LEGAL BUT NOT REGISTERED

Call 01386 576 666 for more information. All prices Ex-VAT

**NOW AVAILABLE
FOR DEMO!**



KL55.8T - The telescopic wheel loader with a stacking height of over 5 metres

- **Powerful Deutz engine with 136 hp or optional 156 hp; with minimum consumption**
- **3900kg Payload**
- **Quick work cycles due to the powerful load-sensing hydraulics**
- **7" LCD display with integrated rear-view camera**
- **Ergonomic cabin design thanks to the innovative operating concept**

Call your local rep for more information 0345 222 0456



KRAMER

CALL YOUR NEAREST BRANCH FOR MORE DETAILS

EVESHAM

Hinton on the Green
Evesham
Worcestershire, WR11 2QT

BIBURY

Meadowlands
Bibury, Cirencester
Gloucestershire, GL7 5LZ

LEOMINSTER

Southern Avenue
Leominster
Herefordshire, HR6 0QB

NARBERTH

Redstone Road
Narberth
Pembrokeshire, SA67 7ES

0345 222 0456

WWW.TALLISAMOS.CO.UK