

TAG PARTS ONLINE

Over 550,000 parts and consumables from the brands you love, available to order online.



JULY 2018

IN THIS ISSUE

WEST WILTS TRADES UP
PAGE 6

WIN AUTUMN
INTERNATIONAL
TICKETS
PAGE 11

TAG PARTS ONLINE
PAGE 12

WELCOME

It's all go this month at Tallis Amos Group, the Grass Harvest is in full swing and the final preparations are underway before the combines roll into action. With the recent spell of warm weather our turf team are also hard at work helping our turf, residential and amenity customers.

We've invested in our aftersales team growing capacity to deliver an even better level of customer service. This month we're rolling out our extended seasonal opening hours, along with a new contact number to further enhance our out of hours service. All intended to make sure that we're here when you need us (Page 3).

PowerGard protection and maintenance schemes are proving very popular this year with both agricultural and turf customers looking to fix their costs. In an extension to the existing schemes we are pleased to announce the launch GreenShield warranty on selected used equipment. TAG can now offer a full range of options to suit all budgets, from basic cover against major component failures through to comprehensive cover including fixed price maintenance. To celebrate the launch of GreenShield, we've got a pair of autumn international rugby tickets up for grabs (Page 11).

2018 is a milestone year for John Deere, it marks 100 years since the iconic Waterloo Boy rolled off the production line in Iowa. Looking at the current line up of intelligent equipment in the range it's amazing to see just how far the product line has developed. With such a range of equipment identifying the right part can sometimes be a challenge. In 2016 TAG launched a dedicated online parts service, since then it has grown into an important part of the business. Available to all customers allowing a quick easy search of Genuine parts from the entire John Deere catalogue, with access to parts drawings and local depot availability this powerful tool allows you to order directly from a computer, tablet or mobile phone.

As you'd expect, help is always available from our experienced parts team if you need help finding that difficult part.

New for this season, we have expanded our online parts offering to include many other parts and consumables. TAG Online powered by Kramp! Gives you access to a catalogue offers over 500,000 lines for popular brands, with a wide range of components for all makes of machinery and equipment, including wearing parts, oils, filters, consumables and a whole lot more. Some of these fast-moving parts we will already have in stock, but these also can be ordered online for overnight delivery 'to-your-door' for ease of convenience. There is a full resource of parts lists for most machines available on the site so. If you don't know the part number there's a very simple, easy-to-use search facility. Each part shows online prices for 'next-day-delivery' direct to your door or your local TAG branch (Page 12).

If you haven't already done so, you will need to register for this service. There is an online video available on the parts section of our website, it walks you through the entire process. If you need assistance in accessing these new online facilities, we are here to help. Any of our branch parts specialists have the skills and knowledge to walk you through the process and once you've breezed through the simple steps, you'll be wondering why you didn't do it before. It's that easy!

Ben Tallis



YOU'VE GOT OUR NUMBER!

0345 222 0456

We're making some improvements to our out of hours backup. As well as extended opening hours, we've also got a new number.

During normal opening hours, this single number will allow you to contact any one of our 5 depots, outside of regular hours you will seamlessly be directed to our out of hours parts or service team.

It's a local rate number meaning that it's included in any free call allowance on your phone package.

Our existing numbers will continue to work, however out of hours you will be asked to re-dial this number so why not update your phone today?

TAG - HERE WHEN YOU NEED US

GENERAL DATA PROTECTION REGULATION (GDPR)

TAG is fully GDPR compliant, you are receiving this promotion as an existing business customer of TAG or because you opted in to receive marketing information.

If you wish to update or check your preferences, please email marketing@tallisamosgroup.co.uk

Our updated privacy policy can be found at www.tallisamosgroup.co.uk/privacy-policy

THE AWARD WINNING ISUZU D-MAX YUKON
**QUITE CLEARLY,
IT JUST WORKS**

**68 PLATE
DEALS**

WINNER
PICK UP OF THE
YEAR 2018

ISUZU
THE PICK-UP
PROFESSIONALS

Great Deals when you pre order your new 68 plate truck!
Contact your local TAG Branch for more information

TCB 859



Stuart (left) Ken and Joff Bemand. "we are becoming very experienced at this new technology."



INVESTMENT IN NEW TECHNOLOGY, BRINGS BIG BENEFIT IN REDUCING COSTS

When you're covering potato ground up to sixteen times a year, applying liquid fertiliser and chemicals, it pays to make the right choice in crop-care machinery. Bemand Bros, Great House Farm, just outside Leominster, Herefordshire, farm some 1200 acres, of which 800 acres are down to arable cropping, including - potatoes, winter wheat, oil seed rape, winter barley, spring barley, winter beans and fodder beet. The remainder is mainly permanent pasture on which they run a herd of beef fatteners and a flock of Suffolk cross ewes.

The farming enterprise is run by Ken & Bob Bemand and Ken's sons Stuart and Joff. Three years ago they traded-in their old Bateman and bought a John Deere 4040i self-propelled sprayer from TAG Leominster. They specified a 24m boom and a complete integrated solutions specification running their GPS controlled AutoTrac system, through GreenStar via an RTK sourced signal. Ken Bemand is the main sprayer operator. "We decided to standardise on all John Deere," said Ken, "because we've always had great support and back-up from TAG and, the GPS system integrates through all of our John Deere machines, the sprayer, the tractors and the combine. We can even transfer screens from one machine to another in a matter of minutes. The big operator benefit is that no matter which machine we drive, the screen controls are identical throughout, which makes it much easier to understand and get the best from the integrated solutions."

By going all liquid fertiliser and crop-care chemicals, Ken can swap from one product to the other and doesn't need to use a separate granular fertiliser spreader - it's all done with the sprayer. "We have five different nozzles integrated into the boom," added Ken, "so we can quickly switch from either the liquid fertiliser or the chemical nozzle and it doesn't tie-up a loader tractor, instead we just move a bowser for liquid fertiliser to the field and the sprayer does the rest."

Despite some difficult banks and side-land at Great House Farm, stability has proven to be a key benefit with the John Deere R4040i and as Ken explains, "We can easily adjust wheel width from the cab, in a matter of minutes - it's that easy. Potato work is a narrow setting at seventy-two inches (72in) and the rest of our arable tramline system is based on ninety two inches. The booms are super strong and we've never had to repair them like previous machines. Likewise, the 'Autofill' system is far superior to anything else we have used and the cleaning process is very effective. It's a true operator's machine that makes it a pleasure to use. After having experienced the comfort in the cab, with the air bags, I don't want to go back to tractor-driving!" he said.

Fitted with John Deere's latest SF6000 receiver, the R4040i brings accuracy to crop-care like never before. Commented Stuart Bemand, "We save a lot by avoiding wastage of chemical because we avoid overlapping and the section control means we can automatically cut-off when working on unevenly shaped fields. Imagine a four percent overlap lost on every pass in every field or due to uneven field shape. On a twenty acre field, that could add up to a lot of wasted product. That's otherwise lost margin."

Added Joff Bemand, "We've actually been saving enough chemical that we often return it because of the efficiency of the sprayer and the precision farming system. That relates not only to chemical, but also to seed and fertiliser. We're on a real winner with this technology."

Concluding, Ken added, "It's taken us a couple of years to really embrace this new technology with the capabilities of the sprayer and now that we are experienced at getting the best from the equipment, and utilising the expertise of the specialists at TAG, we can clearly see that we have definitely made the right decision."



Neil Bungay, Course Manager West Wilts Golf Club "We like dealing with TAG because they really take care of us."



WEST WILTS TRADES UP

One of the biggest challenges facing both the club and the 460 members at the 18 hole, West Wilts Golf Club near Warminster, Wiltshire, is the terrain. Situated on 105 acres of mainly chalk downs, the course ranges from around 100 metres above sea-level at it's lowest point to over 200 metres at the peak. Established in 1891, West Wilts is a year-round course that maintains excellent playing conditions, even in the depths of winter - but it can get cold!

Course Manager Neil Bungay has been at the club since 2000 and is part of a four-strong permanent green-keeping team, all with a long-service record. "We've got a really great course here," commented Neil, "but it certainly has its challenges. It's probably the driest course around in the winter because we have good drainage and therefore we get lots of visitors. We've just invested in three pieces of essential machinery to help us to maintain the quality of the course, they are all John Deere's and we are really happy with our choice."

West Wilts took delivery of a new John Deere 6x4 Gator, which replaces an older model that has been with them since 2001, they also specified a new John Deere 2500B riding greens mower and the latest John Deere 8800A riding trims surround mower.

"We've been John Deere for many years," said Neil, "mainly because of the quality of the finish they produce, but also

because of their reliability and the excellent dealer back-up we get from Tallis Amos Group. The Gator has no other equal and the last one gave us seventeen years of excellent service and has been a really good investment - so why change from a good thing? The riding greens mower (2500B) is the best you can get, and always gives us an excellent finish - which is very much to do with the pride we take in preparing our golf course. Then there's the new 8800A! "We've tried every other brand on the market and nothing compares with this excellent trims surround mower. With our undulations and steep terrain, we needed a machine that would cope with the many contours that populate our course and this one does it superbly every time. It follows the undulations, maintaining a perfect cut without any scalping - for us, it is the perfect choice."

Neil and his team of professionals often give feedback from their experience of their machines on any little way that John Deere can make improvements to their equipment, sending their comments through their local dealer, TAG, back to John Deere in the USA. "We have a great relationship with Bob Culverhouse at TAG because they really take care of us," added Neil, "John Deere equipment really helps us to prepare our greens to the highest standards. We get emails direct from John Deere in the USA, thanking us for our input, and that gives us the feeling that we too are being appreciated for our efforts." he concluded

ARE YOU READY FOR THE ALL NEW WRAPPER BALER?

Building on the proven strengths of the F441R roller baler, the all new C441R from John Deere adds versatility with an all in one baler wrapper combination. Re-designed from the ground up for 2018, the high capacity TTS wrapping system produces over 80 perfect bales an hour. The re-design focus on maximum throughput and reliability. Its adjustable and rugged chamber gives class leading bale density and shape. The full width drop-floor lets you remove blockages instantly from the comfort of your cab and a choice of either 13 or 25 knife MaxiCut chopper units produce great quality silage.

In a first for John Deere the new C441R is now available with the option of a single axle giving great manoeuvrability. "This baler is impressive in the field" says Matthew Blackburn, Narberth Depot Manager. "From the little details such as the re-enforced drive rolls, simplified heavy duty chain drives through to the massive full width rotor fed by a 5 bar pickup, this is the machine our customers have been asking for"

Naturally the ISOBUS compatible baler works with the in-built display on the latest John Deere tractors, alternatively it can be specified with a standalone monitor. Backed by the TAG service team, supported by the renowned John Deere parts system, with great performance and backup to match, this has to be a winning combination. Ask your local TAG sales rep for more information or to arrange a demo.

Options:

Bale diameter:	1.25 – 1.35 m
Pickup width:	2.0 m or 2.2m
Number of knives:	13 (Maxicut HC 13) or 25 (Maxicut HC 25)
Bale chamber:	18 twelve-rib rolls with 2 reinforced and 2 heavy duty

TAG'S HEALTH AND SAFETY ACCREDITATION

We are very pleased to announce that we have been awarded accreditation from Alcumus SafeContractor for achieving excellence in Health and Safety in the workplace.

Alcumus SafeContractor is a leading third party accreditation scheme which recognises extremely rigorous standards in health and safety management amongst contractors.

It is used by thousands of organisations in the UK including SMEs and FTSE 100 companies.

The company's application for SafeContractor accreditation was driven by the need for a uniform standard across the business. SafeContractor

accreditation will enhance the company's ability to win new contracts, and its commitment to safety will be viewed positively by its insurers when the company liability policy is up for renewal.

Ben Tallis, Director of Tallis Amos Group said: One of TAGs Core Values is Reliable – "always trustworthy, safe & dependable".

Health and Safety has always been a key element of this and I am now delighted that we have external accreditation.

Not only does this show commitment to our employees but also demonstrates to customers that they can have confidence in TAG as a safe and reliable supplier.

A DEERE IN EVERY YARD!

The John Deere 5E Series, from 50-75hp with its compact manoeuvrable 4WD design, wet clutch with clutch-less shuttle, push button rear linkage control and comfort view cab it's becoming a very popular choice for the yard scraper and other yard duties.

Is it time you considered a John Deere for your yard?

From
£23,500 + VAT
5050E



TAG DEMO THE NEW S785 & 735 DRAPER PLATFORM FOR 2018

The most advanced grain harvesting technology from front to back is featured in the combines and headers John Deere has introduced for 2018 and will be on demonstration through your local TAG branch. Four new S700 Series rotary combine models – the S770, S780, S785 and S790 – offer producers significant improvements in 'smart' technology, operator comfort and data management. The S700 Series models incorporate the latest in automated harvesting technology.

Many of the changes make it easier for the operator by allowing the combine to carry out the necessary adjustments automatically, on the go.

To make it easier for operators to maximise the performance of these new combines, John Deere has introduced the next generation of automation, Integrated Combine Adjustment.

Also available as an option is the Combine Advisor package, two ActiveVision cameras give the operator a view into the tailings and clean grain elevators via the cab display. The system constantly analyses this information from the cameras along with the loss sensors to maintain optimal threshing, separating and cleaning performance based on the operator set targets.

According to a study conducted by the University of Göttingen in Germany, ICA can improve utilisation of the combine's built-in capacity by up to 20 per cent.

Winner of a DLG Silver Medal award at Agritechnica 2015, the new Active Yield option transforms the accuracy of yield

mapping by automatically calibrating the combine's standard mass flow sensor. This saves time and improves harvesting performance by eliminating the need for time-consuming manual calibrations and double-weighing of trailers and ensures that the most accurate data is collected for more effective precision farming applications.

Three weigh cells inside the grain tank automatically measure the change in weight as the tank fills. The system compares his measurement with those of the mass flow and moisture sensors to calibrate the yield data constantly. It is also designed to compensate for shifting grain when harvesting on slopes or if the combine stops.

The yield data is displayed on the GreenStar 4600 display and can be wirelessly transferred to the Operations Centre in MyJohnDeere.com. From here it can be downloaded into the farm management system and used to create a prescription map for the next job to be carried out in the field.

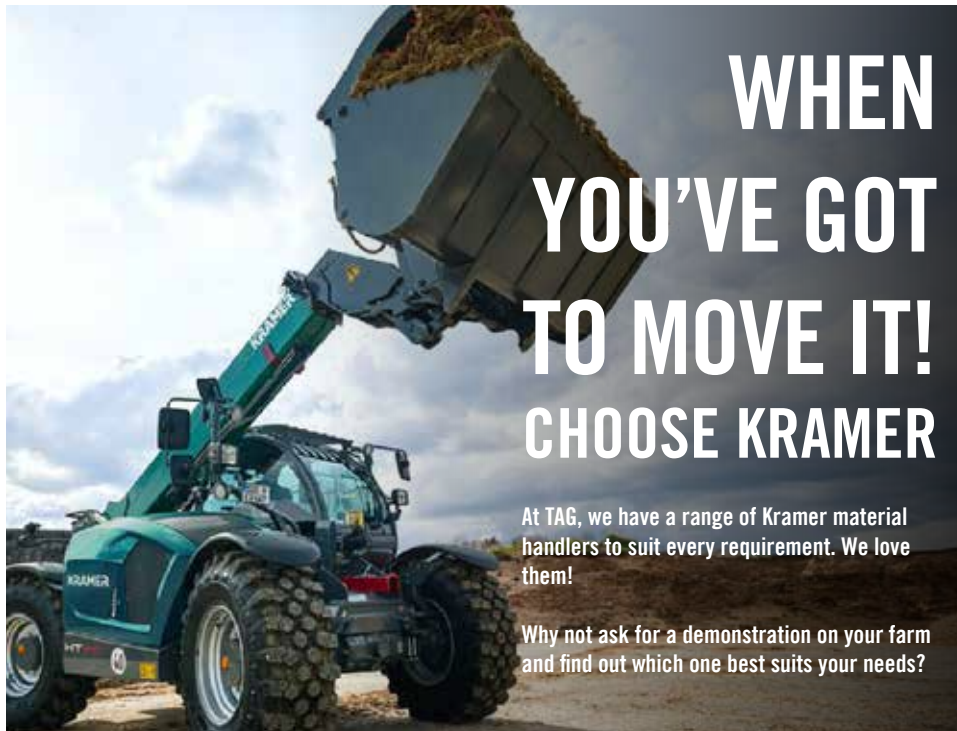
In another first for 2018, TAG are running the new John Deere 735D series draper platform complete with flip-over reel tines. This new platform has proven to increase the performance of the S Series combine in small grains. This is achieved by ensuring the optimum presentation of the crop to the combine feeder house by means of two converging belts delivering a smooth crop flow. The active HyraFloat suspension system keeps the header at the precise cutting height required, even in undulating ground.

Ask your TAG sales representative for more details.

WHEN YOU'VE GOT TO MOVE IT! CHOOSE KRAMER

At TAG, we have a range of Kramer material handlers to suit every requirement. We love them!

Why not ask for a demonstration on your farm and find out which one best suits your needs?





PROTECT YOURSELF WITH USED MACHINERY WARRANTY

In association with John Deere, GreenShield is an exclusive warranty extension package which allows you to add up to 24 Months / 2000 Hours* additional warranty to your used John Deere machine up to 5 Years old.

GreenShield Power

Covers major drive train components - Engine, torque hubs, transmission, front and rear axles

GreenShield Plus

Covers the same components as GreenShield Power.Plus coverage of the major hydraulic components and ECU controllers



Combines

3 months 250 Hours

6 months 500 Hours



SPFH

12 months 500 Hours



SPS

12 months 1000 Hours



Tractors

24 months* 2000 Hours*

* 24 Month/2000 hour option only available on tractors

BE PREPARED FOR THE WARM WEATHER WITH A TAG AIR CON SERVICE

We can carry out Air Conditioning Servicing on all Makes and Models of Tractors, Combines, Sprayers and Telehandlers

Air Con systems that are not recharged regularly will be less effective and have to work harder to produce cool air. If your air con system has not been charged in the past 2 years it will dramatically reduce efficiency

Our in house air con recharge service also includes a full system health check for any leakages!



WIN AUTUMN INTERNATIONAL TICKETS

With the new GreenShield extended warranty available on selected used equipment we now offer a complete range of extended warranty options to suit all budgets, from basic cover against major component failures through to comprehensive cover including fixed price maintenance.

To celebrate, we've got a pair of International rugby tickets for grabs!

Purchase any New or Used extended warranty package from Tallis Amos Group and take delivery of your machine between the 1st June 2018 and 30th September 2018 to be entered into a draw to for a chance to win a pair of tickets to a choice of two Autumn International Matches.

As your sales representative how PowerGard and GreenShield Protection packages can help protect your equipment.

Saturday 3rd November 2018



England

South Africa

Twickenham, London

Saturday 17th November 2018



Wales

Tonga

Principality Stadium, Cardiff

TAG PARTS ONLINE

In association with Kramp UK, Tallis Amos Group are pleased to be able to give you access to Europe's largest range of spare parts all in one place within a few clicks through our online shop.

Whether you operate in the agricultural market, forestry & grasscare sectors, in the construction, mechanical engineering, or earth-moving industries we have all the parts and consumables that you require.

- Open 24 Hours a day, seven days a week
- Search within Categories and by Model
- Genuine and Quality compatible manufacture parts
- Up to date Stock Availability
- Parts Diagrams to assist in identifying the correct part

Not to worry if you need a hand, our experienced team of in house Parts Experts are always at the end of the phone and happy to help.

If your order is placed by 6pm its eligible for next day delivery either direct to your door or you can collect free of charge from your local TAG branch!*



[tallisamosgroup.co.uk/
online-parts](http://tallisamosgroup.co.uk/online-parts)

To register for this service

Visit our website at the above address and complete the online registration form or contact Paul Stuckey—Group Parts Manager on 07500 091 944 or paul.stuckey@tallisamosgroup.co.uk

* Next day delivery excludes orders placed on weekends or bank holidays



ALL CHANGE AT LEOMINSTER GOLF CLUB

Recent changes in the management structure away from a committee to a Board of Directors at Leominster Golf Club has given the organisation a much needed boost in how it responds to the needs of the club and its membership.

Steve Grealy, Head Green-keeper and Course Manager for Leominster Golf Club said, "In addition to a proactive board of directors, we now have a business manager as part of our team and we are finding a more responsive decision-making process at the club, compared to previous arrangements. It's a much more positive environment to work in, forward-looking, enthusiastic and, decisions are made quickly so we can get on and further develop the club for the benefit of the membership."

As part of the forward-looking programme, Leominster Golf Club has just invested in new equipment to meet its aims of providing the highest quality greens in Herefordshire. "We have a membership of 450 and get many visitors throughout the year," added Steve, "they expect the best of the best -

and if we don't provide it, we will hear about it. We've made a decision to go all John Deere from our local dealer Tallis Amos Group. We've had excellent service and after-sales support over the years from TAG and they've never, ever let us down. The John Deere machinery is superior to anything else out there, it's certainly best value-for-money and the in-field performance is second-to-none."

The new equipment joins Leominster's existing fleet of John Deere machines that includes, compact tractors, gators, hybrid greens mowers and rough mowers.

"We've just taken delivery of a new John Deere 4066R Compact tractor with John Deere loader also, another 2653B Tees and Surrounds Mower" confirmed Steve. "The quality of the finish from this equipment, plus the support we get from TAG has given us an edge over other courses out there and that's part of the ongoing plan for our newly managed facility - to provide the best, and be the best for our discerning membership." he concluded.

HARVEST PROMISE!

Our harvest promise to you is that TAG will match any price for replacement blades and/or wearing parts for all John Deere mower conditioners and John Deere Self-propelled forage harvesters - like for like using Genuine John Deere replacement parts. Try us out and see how competitive we are on genuine replacement parts.



We are attending the following events during 2018 and would love you to drop by and say hello. For more information, head to our website: www.tallisamosgroup.co.uk

Date	Event	Location
July		
18th	NSA Sheep Event	Three Counties Show Ground, Worcs
27th	60th Game Fair	Ragley Hall, Warwickshire
28th		
29th		
August		
1st	Pembroke Town & Country Show	Lamphey Showground, Pembroke
2nd	Burwarton Show	Burwarton Show Ground, Shropshire
3rd	161st Fishguard Show	Cefn Y Dre Fields, Fishguard
4th	Cardigan County Show	A487, Cardigan - Fishguard
4th	Tenbury Countryside Show	A456, Tenbury
5th	The Gower Show	Penrice Castle Park, Gower
8th	Nevern Show	Newport, Pembrokeshire
10th	Lampeter Show	Pontfaen Fields, Pembrokeshire
14th	Pembroke Country Show	County Showground, Pembrokeshire
15th		
16th		
22nd	Martletwy & District YFC Show	Carew Airfield, Pembrokeshire
27th	Pontardulais Show	Pentre Road, Pontardulais
September		
1st	Morton In Marsh Show	Batsford Road, Gloucestershire
8th	Llandyfaelog Show	Llandyfaelog, Carmarthenshire
8th	Kington Show	The Ovals Farm, Herefordshire
9th	Frampton Country Fair	Frampton Court Park, Gloucestershire
20th	Forest of Arden Ploughing	Pools Barn Farm, Wootton Wawen
29th	FFF & B Ploughing Match	Friars Court, Oxon

MIKE RETIRES AFTER 50 YEARS OF SERVICE



Many of our customers will have met Mike Anderson during his 50 years with the company. Mike started with Alexander and Duncan in 1968 as a workshop apprentice, moving through the workshop taking on the role of Workshop Manager at our Leominster depot in 1991 before retiring earlier this year.

Andrew (Fred) Wentworth has stepped into Mike's shoes as Workshop Manager, supported by Roger Jones who takes up the position of Workshop Foreman.

We would all like to wish Mike Anderson a very happy retirement, which will no doubt be filled with many vintage restoration projects.

EX DEMO OFFERS



11017777

JD 6250R

AutoPowr IVT 50k, Ultimate Edition, 710/70R42 & 600/70R30 Michelin, 160L/min Hydraulic Pump, 5 Rear SCVs, 3 Speed PTO, Premium Front Hitch, Wheel Weights, Air Brakes, Premium Light Package, SF6000, AutoTrac, 248 hrs.



31019718

JD 7310R

Ultimate Edition, 50k AutoPowr, 710/70R42 & 600/70R42 Michelin, AutoTrac, Premium Connectivity, 10" Command Centre, 5 Rears SCVs, Front Hitch & PTO, Air & Dual Line Hydraulic Brakes, 250kg Wheel Weights, SF6000 SF1, 200 hrs



11018836

JD 6215R

AP, 50k Premium Edition, 710/70R42 & 600/70R28 Michelin, TLS, AutoTrac, SF6000, Generation 4 Command Centre, 4600 Processor, 4SCV Rear, Premium Seat, Premium Lighting package. 444 hrs.



51019186

JD 6130M

40k CommandQuad Plus, 520/70R38 & 480/70R24 Michelin, 3 Mechanical SCV, 114L/min Hydraulic Pump, Extra Oil reservoir, 3 speed PTO, Premium Lights, Dual Beacon, AirCon, 150 hrs



21019539

JD 6130R

643 Loader, AutoQuad 24/24 40k, 520/70R38 & 480/70R24 Michelin, TLS, 2 Line Air/Hydraulic Brakes, Glass Roof, Panorama Windscreen and B Post, Premium Lights and HB3 Loader Lights, 3 Mechanical SCVs, 3 Speed PTO, 130 hrs.



11016119

JD M700

Section Control, Hydraulic Pump Drive, 24m Boom - 2/12m Sections, Tilt & Variable Geometry with BoomTrac, Pressure Recirculation Spray System, Chemical Storage Box, Digital Tank Level Indicator, Beacon Light, 3" Filling Hose 9m.



51019374

Kramer KT357

3.5Tonne, 7m Lift, 40k Ecospeed, 460/70R24 Michelin, Kramer Headstock, Air Con, Auto-hitch Trailer Coupling, Hydraulic Trailer Brake, Tipping Connection, Load Stabiliser, Reverse Fan, Ceasar DataTag

CALL FOR PRICE

Our Spring Demonstrators are now ready for Sale, call your sales rep to find out more information on the great savings to be made on ex demo machines.

0% Finance available on all ex-demo John Deere Equipment*.

*Finance for business use in the UK only, subject to acceptance, conditions apply.



11020740

JD 8360R (2014) £105,000

Autopower 40K, Goodyear 800/70 R38 & 600/70 R30, 7 Inch Colour Touch Display, Premier Cab. Premier Radio w/bluetooth, Five ESCVs, Pick up hitch with telescoping hook, Drawbar, HID Light Package, 4380 hrs



21019575

JD T560 (2011) £115,000

Lateral Tilt, Air Seat, Autotrac And Monitoring Ready, Premium Straw Chopper, Chaff Preader, Windrow Deflector Rake, Dual Cyl Drive, Trailer Hitch. 622R Header & Trolley Rape Ext, 937 Eng, 663 Sep



11020406

JD C670 (2011) £120,000

625R Header, Immaculate condition, Barn stored, full pre harvest check including belts as can be seen in photos, Autotrac ready, Good tyres, 1040 hrs



51020466

Massey Ferguson MF 6460 (2005) £25,000

4WD, Front Suspension, 3 Spools, Tyres 80%, 3250 hrs



31020314

Merlo P32.6 Plus (2014) £34,000

6 meter, 3.5 ton, air seat, aircon, PUH, 405/70R24 @ 40%, Merlo headstock, 2600 hrs



21021229

Browns Flat Eight (2005) £650

Browns Flat 8 small bale grab, Pin and cone headstock



31011876

Lemken Sirius 9 (2010) £12,000

1900 Lit, 24M Boom 12/18/24 Boom Shut Off Wash Off Kit, Self Leveling, Digital Tank Control



51019594

JD 7780I (2015) £150,000

Prodrive 40Km, Autolube, 40 Knife Drum, Kernelstar Kp (Elec.) Advanced Header Control, 22 Q-Tatch Weights, Puh, Additional Strd Maize Kp, 650/R32 Mich, 1691 eng, 1091 drum



51019969

Claas 890 (2004) £80,000

Jaguar Profistar, Grass Only Machine C/W PU300HD Grass Pick Up, 2561 hrs



11020739

JD 7280R (2013) £76,000

A/P 40KPH, 600/70R30 40%, 800/70R38 30%, 4 spools, F/L +pto, 4384 hours 5000hr powergard Plus Warranty

0% From £12,666 PA *



11019260

JD C670 (2011) £110,000

Cw 625R 25Ft Trolley, 882 Separator Hours, 1215 Engine Hours, 30K Transmission, Dual Range Cylinder Drive, Harvest Monitoring, Hir Work Lights In Cab Roof, Hd Feeder House



31020647

JD 6155R (2017) £95,000

Autopowr 50K,Ultimate Edition, TLS & Cab Suspension, Airseat, AC, Command Arm, 4 ESCV's,650/65R38 & 540/65R30, AT Ready, 676 hrs



11019770

JD 7260R (2012) £80,000

Autopowr 40K, 4 E-SCVS, 710/70R42, 600/70R30, Cast Wheels. Trelleborg Tyres, TLS, PUH, Bar Axle, 7983 Kg Lift, Premium Radio, 2427 hrs

0% From £12,333 PA *



51018119

JD 7400 (2003) £49,500

C/W 630A Header Eng Hrs 4448, Drum Hrs 3069, 650/75R32 Michelin (50%), 480/80R28 Goodyear (25%), 3 Speed Hydro - 4Wd, Ivloc Header Drive, 40 Knife Drum, Auto Shearbar Adjust, Rear Scv (No Hitch)



11018657

Champion 345 6 Row Kemper (2001) £12,500

6 Row Kemper 2001 To Fit Jd 7000/7050/7080



83-07555

JD 842 (2010) £9,750

2m Pick Up, Hi-Flow Baler, Low Bale Count - 11,781 Bales



11018606

JD 530 (2011) £9,500

12/75-16 Wheels, 1000 Rpm Drive, 21 Spline Shaft, Wide Angle Drive Shaft, Hood For Wide Spread



31019795

Kuhn FC283 (2010) £4,750

2.8m Mounted Mower Conditioner, Nylon Tines



31019086

Kverneland 2.8M FLAIL TOPPER (2005) £3,950

Hyd Offset, Front And Rear Mounting



51013102

Stock Clearance

Pöttinger 422 SINGLE ROTOR RAKE £4,995

4.2m Working Width, 3.3M Rotor Diameter, 2.29M Transport Width, 0-6 - 1.65m Swath Width, 12 Tines Per Rotor & 4 Tines Per Arm



51021638

Lely LOTUS 770 (1999) £4,750

3 point linkage mounted, 6 rotor 7.7m



31016322

Kramer 8095T (2016) £58,355

Ex Demo! 101Hp 40K Boom Extension, 3rd Service Pressure Release, Rear Axle Lube, Air Seat, Radio & Aircon, Continental 425/75R20, Hyd Trailer Brakes & Light, Connector, Ball Hitch, 1.2m Pallet Forks, Includes Bucket and Power Grab worth £4,400, 430 hrs



11017129

JD 2500E (2016) £26,450

Ex Demo Diesel Greens Mower, 20X10 Smooth Ride Tyre, 22QA5 11 Blade Cutting Units, Grooved Roll Gtc & Rear Roller Power Brush



11019100

JD X750 (2017) £14,052

24.5 HP Yamar 3 Cylinder Engine, Hydrostatic Transmission with twin touch foot pedals, 2 Wheel Drive, 54" Auto Connect deck, 13 hours Mulch on demand Kit installed

WE DO TRACTORS.



JOHN DEERE
TRACTORS
100
YEARS



NOTHING RUNS LIKE A DEERE

Call 01386 576 666 for more information. All prices Ex-VAT

WWW.TALLISAMOSGROUP.CO.UK

THE AUTOMATED COMBINE

S700 SERIES

AUTOMATIC ... The brand new S700 is the automated combine. It brings together all our experience as one of the world's largest combine manufacturers. Developed with our engineers and customers working together, it's a revolution in productivity, grain quality and lower losses. Also, on our T and W Series walker combines you can benefit from many of the automated features.



JOHN DEERE

NOTHING RUNS LIKE A DEERE

CALL YOUR NEAREST BRANCH FOR MORE DETAILS

EVESHAM

Hinton on the Green
Evesham
Worcestershire
WR11 2QT

T: +44 (0) 1386 48600

BIBURY

Meadowlands
Bibury, Cirencester
Gloucestershire
GL7 5LZ

T: +44 (0) 1285 740115

LEOMINSTER

Southern Avenue
Leominster
Herefordshire
HR6 0QB

T: +44 (0) 1568 613434

NARBERTH

Redstone Road
Narberth
Pembrokeshire
SA67 7ES

T: +44 (0) 1834 860202

BRISTOL

Unit 16 Avonside
Industrial Park,
Feeder Road, Bristol
BS2 0UQ

T: +44 (0) 117 9770951

0345 222 0456 | WWW.TALLISAMOSGROUP.CO.UK